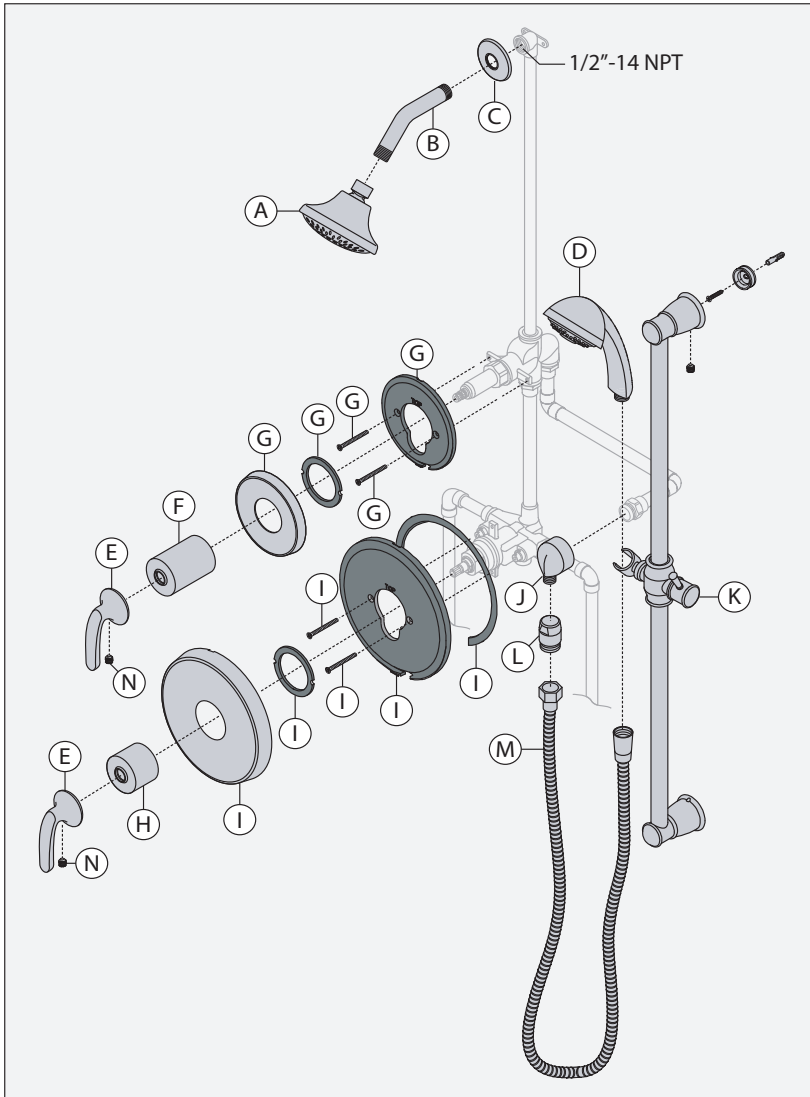


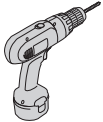
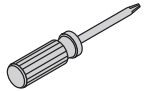

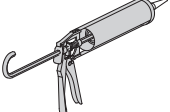


## Parts Breakdown



Replacement Parts		
Item	Description	Part Number
A	Showerhead	552SH-2.0
B	Shower Arm	300
C	Flange	300
D	Hand Shower	552W
E	Handle Assembly	T-01764
F	Dome Cover	T-223
G*	Diverter Escutcheon Kit	T-634-NS-K001
H	Dome Cover	T-19
I*	Shower Escutcheon Kit	T-631-NS-K005
J	Wall Elbow	HS-01995
K	Slide Bar	HS-01997
L	In-line Vacuum Breaker	EF-109
M	60" Hose	HS-01994
N	Handle Set Screw	TS-18A

### Tools Required for Installation

Adjustable wrench	
Allen wrench 1/8"	
Drill	
Phillips head screwdriver	
Plumber tape	
Silicone	

### Notes:

- \*1) Apply a bead of silicone around the perimeter of the escutcheons after installing trim flush with wall. Leave opening on bottom of escutcheons for weep hole.
- 2) Apply plumber tape to all threaded connections.