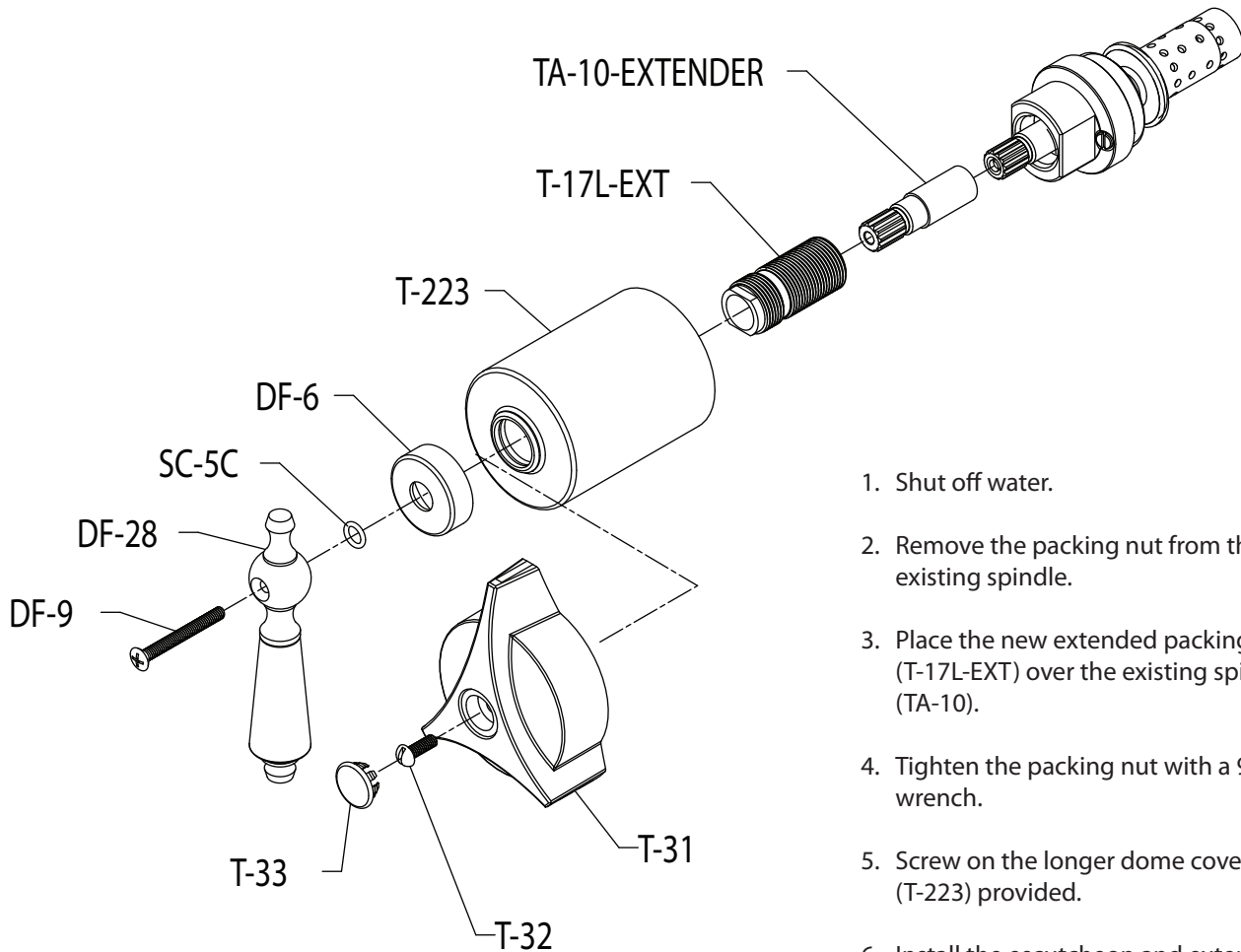


TA-10 EXTENSION KIT



1. Shut off water.
2. Remove the packing nut from the existing spindle.
3. Place the new extended packing nut (T-17L-EXT) over the existing spindle (TA-10).
4. Tighten the packing nut with a 9/16" wrench.
5. Screw on the longer dome cover (T-223) provided.
6. Install the escutcheon and extended diverter handle (diverter/volume valve type only) to the valve.
7. For DF-28 handle: Place the flange (DF-6) and o-ring (SC-5C) over the spindle.
8. Place handle (DF-28 or T-31) over the spindle broach and secure with screw (DF-9 or T-31) through the handle hole and the spindle extension into the top of the original spindle. For T-31 handle: snap in plug button (T-33).