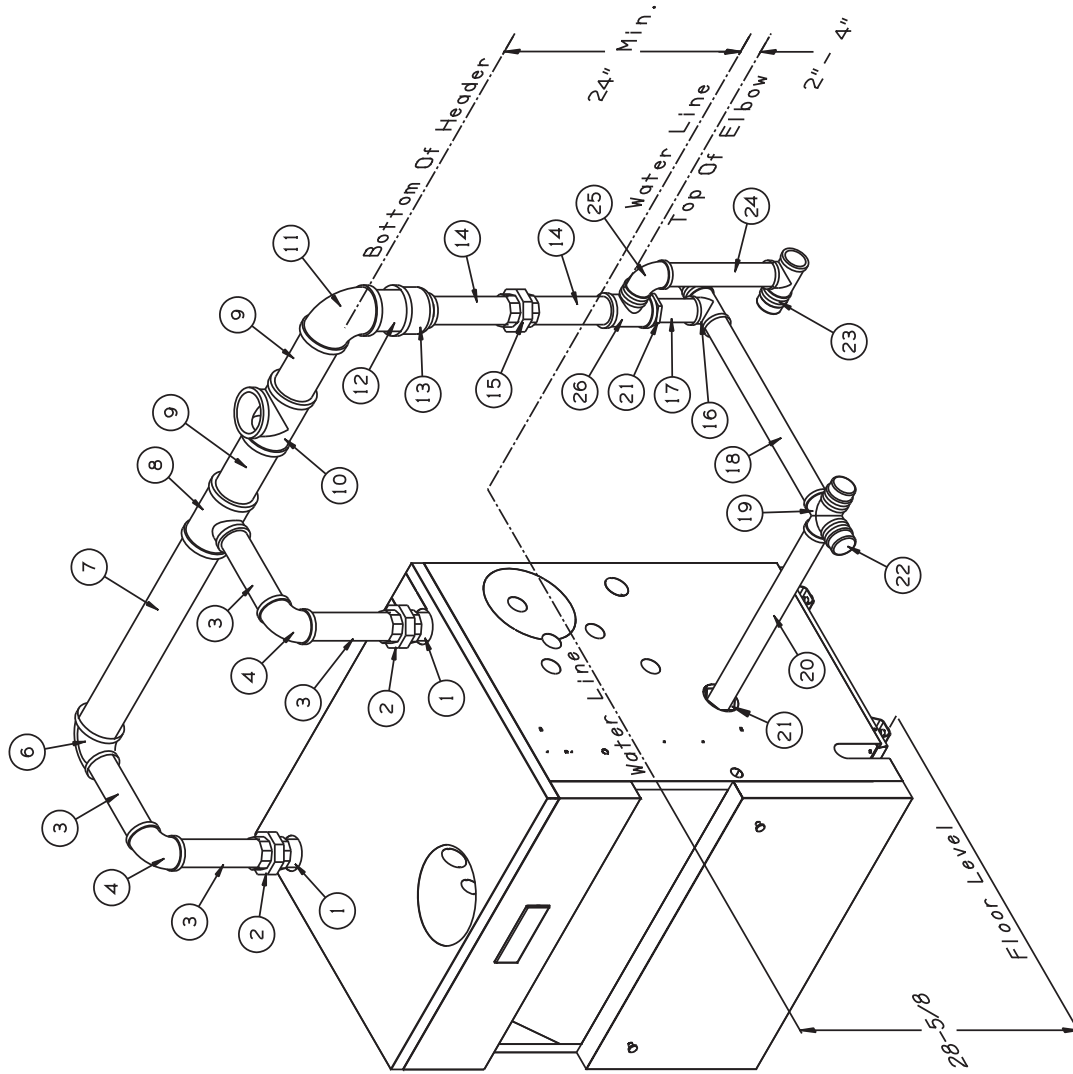
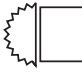


BSI Kit 3



Number	Quantity	Description
1	2	2" x 8" Pipe Nipple (supplied with boiler)
2	2	2" Union
3	4	2" x 9-1/2" Pipe Nipple
4	2	2" - 90° Elbow
-	-	-
6	1	3" x 2" - Reducing Elbow
7 (241)	1	3" x 20" Pipe Nipple
7 (276)	1	3" x 23-1/2" Pipe Nipple
8	1	3" x 2" x 3" Reducing Tee
9	2	3" x 8" Pipe Nipple
10	1	3" x 3" x 3" Tee
11	1	3" - 90° Elbow
12	1	3" x 4-1/2" Pipe Nipple
13	1	3" x 2" Reducing Coupling
14	2	2" x 9" Pipe Nipple
15	1	2" - Union
16	3	1-1/2" Tee
17	1	1-1/2" x 5" Pipe Nipple
18	1	1-1/2" x 21-1/2" Pipe Nipple
19	1	1-1/2" Cross
20	1	1-1/2" x 21" Pipe Nipple
21	2	2" x 1-1/2" Hex Bushing
22	4	1-1/2" Cap
23	5	1-1/2" Close Nipple
24	1	1-1/2" x 12" Pipe Nipple
25	1	1-1/2" 90° Elbow
26	1	2" x 1-1/2" x 2" Reducing Tee

 SIZE C DRAWN BY JP	Added Note & Part Number JP 6-6-13	
	BSI Kit 3 Near Boiler Piping For Models 241 & 276	
ENG.	MTL NA	DATE 6-5-13 SCALE NA
CROWN BOILER CO.		PART NO. 850097 Dwg. No. IND-032 REV A

NOTE: INCLUDE A COPY OF THIS DRAWING IN BSI KIT 3.