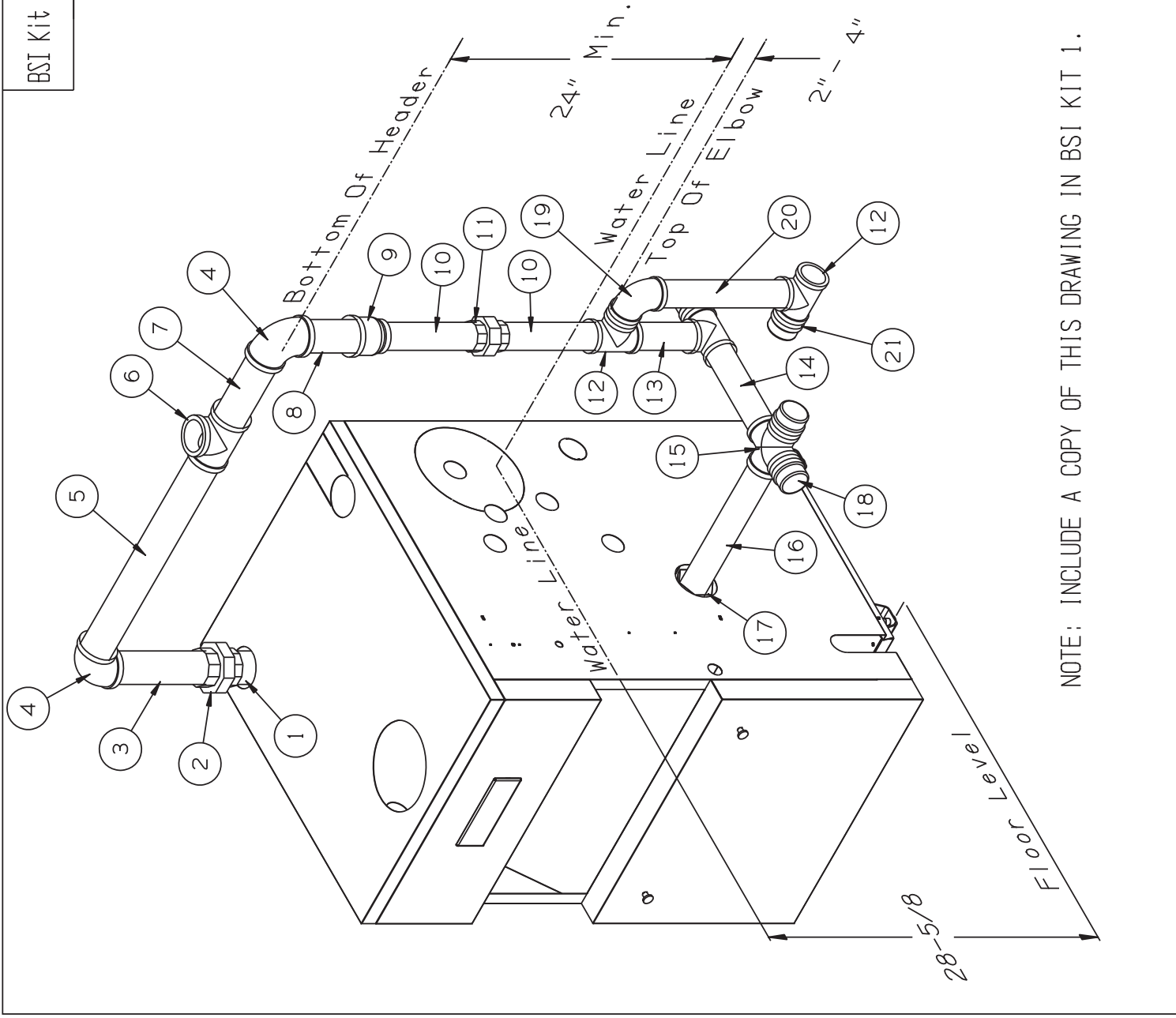


BSI Kit 1

Number	Quantity	Description
1	1	2" x 8" Pipe Nipple (supplied with boiler)
2	1	2" Union
3	1	2" x 9" Pipe Nipple
4	2	2" - 90° Elbow
5 (069)	1	2" x 10-1/2" Pipe Nipple
5 (103)	1	2" x 14" Pipe Nipple
5 (138)	1	2" x 17" Pipe Nipple
5 (172)	1	2" x 20-1/2" Pipe Nipple
6	1	2" - Tee
7	1	2" x 7" Pipe Nipple
8	1	2" x 5-1/2" Pipe Nipple
9	1	2" x 1-1/2" Reducer
10	2	1-1/2" x 9" Pipe Nipple
11	1	1-1/2" - Union
12	3	1-1/2" - Tee
13	1	1-1/2" x 6" Pipe Nipple
14	1	1-1/2" x 8-1/2" Pipe Nipple
15	1	1-1/2" - Cross
16	1	1-1/2" x 13" Pipe Nipple
17	1	2" x 1-1/2" - Hex Bushing
18	4	1-1/2" - Cap
19	1	1-1/2" - 90° Elbow
20	1	1-1/2" x 12" Pipe Nipple
21	5	1-1/2" x Close Nipple



NOTE: INCLUDE A COPY OF THIS DRAWING IN BSI KIT 1.

	A	Added Note & Part Number	JP	6-6-13
	BSI Kit 1 Near Boiler Piping For Models 069, 103, 138 & 172			
SIZE C DRAWN BY JP	<b>CROWN BOILER CO.</b>			
ENG.	MAT'L NA	DATE 6-5-13	SCALE NA	REV A
		PART NO. 850095	DWG NO. IND-030	