

## 2500 SPECIFICATIONS



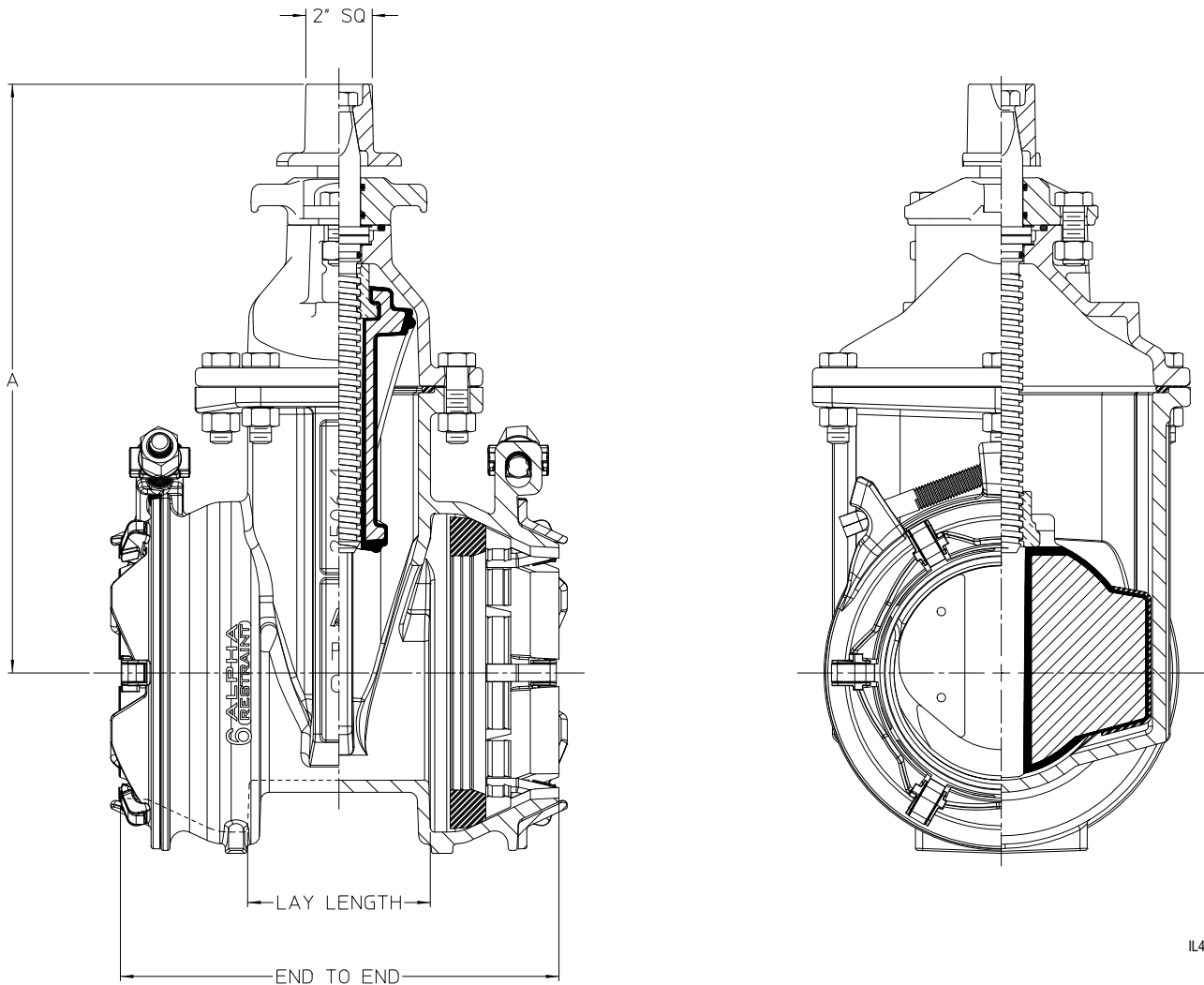
Valves 2 in.—66in. shall be resilient wedge type rated for 250 psig cold water working pressure. All ferrous components shall be ductile iron. All NRS valves, in applicable configurations, 2-1/2in.—24in. in diameter shall be Listed by Underwriters Laboratories, Inc. All OS&Y valves in applicable configurations, 3in.—24in. in diameter shall be Listed by Underwriters Laboratories, Inc. Valves 3 in.—54 in. shall be in full compliance with ANSI/AWWA C515. The words "DI" or "Ductile Iron" shall be cast on the valve. The wedge shall be ductile iron encapsulated with EPDM rubber and provided with male type guides and polymer guide covers. Bolting shall be Type 304 stainless steel and shall be provided with hexagonal heads with dimensions conforming to ANSI B18.2.1. Metric size, socket head cap screws therefore are not allowed.

- Operating nut shall be constructed of ductile iron and shall have four flats at stem connection to assure even input torque to the stem.
- All gaskets shall be pressure energized O-rings.
- Stem shall be sealed by three O-rings. The top two O-rings shall be replaceable with valve fully open and while subject to full rated working pressure. O-rings set in a cartridge shall not be allowed.
- Valve shall have thrust washers located with (1) above and (1) below the thrust collar to assure trouble-free operation of the valve.
- All internal and external surfaces of the valve body and bonnet shall have a fusion-bonded epoxy coating, complying with ANSI/AWWA C550, applied electrostatically prior to assembly.
- Valves shall be certified to NSF/ANSI Standard 61 and NSF/ANSI 372.
- Valves shall be AMERICAN Flow Control's **Series 2500 or 2500-1 Resilient Wedge Gate Valve.**

# AMERICAN Flow Control Submittal Information

## 4" - 12" SERIES 2500-1 RESILIENT WEDGE GATE VALVE, NRS

### WITH ALPHA™ RESTRAINT JOINTS



IL4357

ALPHA restraint joints will accommodate the following pipe types and sizes:

#### ALPHA

- Ductile iron per AWWA C151
- PVC per ASTM D1785 (Schedule 40 and 80)
- PVC per ASTM D2241 (SDR 21)
- PVC per AWWA C900
- HDPE per AWWA C906 (SDR 9, 11, 13.5, and 17)

DIMENSION	VALVE SIZE				
	4"	6"	8"	10"	12"
End to End	11.34	12.81	16.22	17.34	18.96
A	13.91	17.12	20.47	24.06	27.59
Lay Length	4.24	5.32	6.37	7.15	8.31
No. of Turns to Open	14	20	26	32	38

Nominal Size (in)	ALPHA OD Range (in)
4	4.50 - 4.90
6	6.60 - 7.00
8	8.60 - 9.10
10	10.75 - 11.20
12	12.75 - 13.30



**AMERICAN**  
FLOW CONTROL

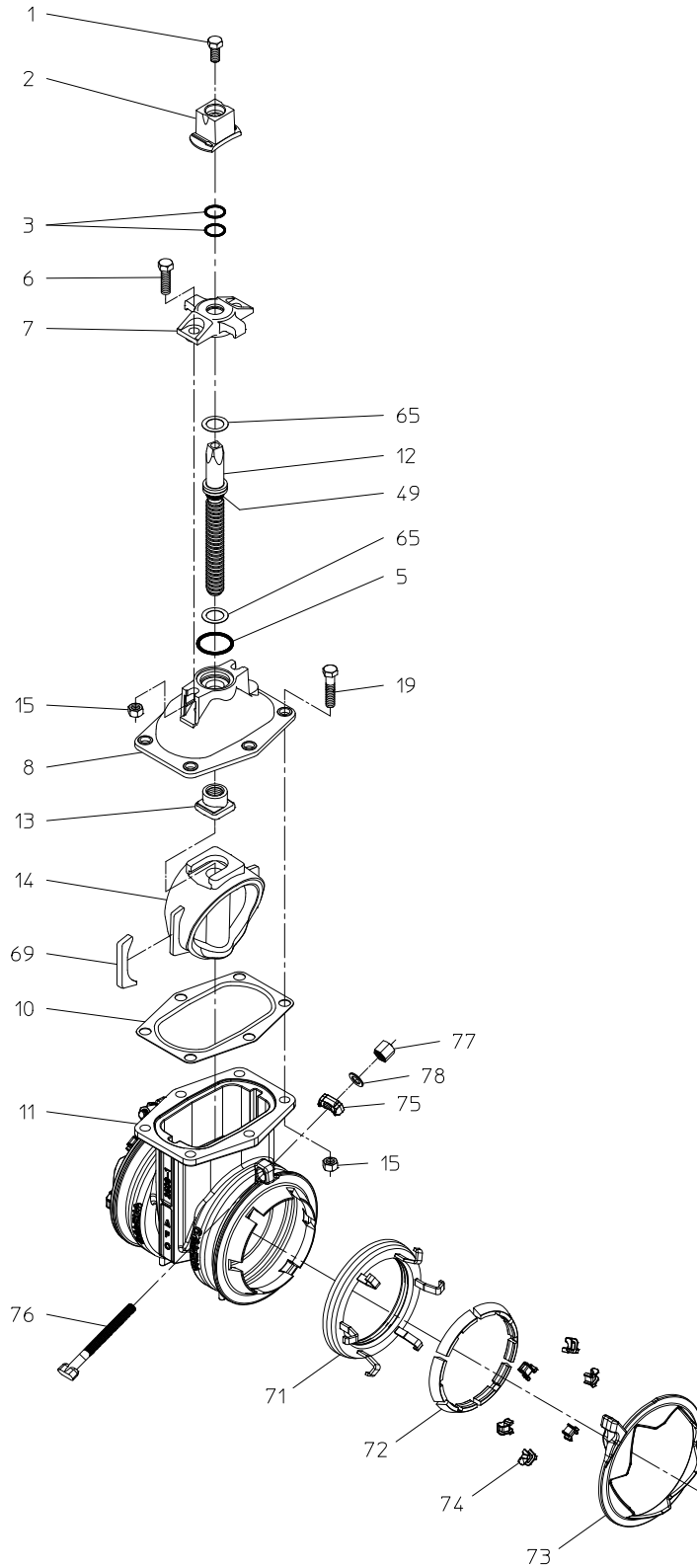
**THE RIGHT WAY**

AMERICAN Flow Control  
P.O. Box 2727  
Birmingham, Al. 35202-2727  
Phone: 1-800-326-8051  
Fax: 1-800-610-3569  
E-mail: afcsales@american-usa.com

Waterous Company  
125 Hardman Avenue South  
South St. Paul, Mn. 55075-1191  
Phone: 1-888-266-3686  
Fax: 1-800-601-2809  
E-mail: afcsales@american-usa.com

ALPHA™ is a licensed trademark of Romac Industries, Inc. (U.S. Patent 8,894,100)

[WWW.AMERICAN-USA.COM](http://WWW.AMERICAN-USA.COM)



IL4358

Construction shown is typical of the 6-inch size and is illustrative only.



**AMERICAN**  
FLOW CONTROL

**THE RIGHT WAY**

AMERICAN Flow Control  
P.O. Box 2727  
Birmingham, Al. 35202-2727  
Phone: 1-800-326-8051  
Fax: 1-800-610-3569  
E-mail: afcsales@american-usa.com

Waterous Company  
125 Hardman Avenue South  
South St. Paul, Mn. 55075-1191  
Phone: 1-888-266-3686  
Fax: 1-800-601-2809  
E-mail: afcsales@american-usa.com

[WWW.AMERICAN-USA.COM](http://WWW.AMERICAN-USA.COM)

REF NO.	DESCRIPTION	MATERIAL
1	Hex Head Bolt, 5/8-11 x 1"	304 Stainless Steel
2	Operating Nut, 2" Square	Ductile Iron, ASTM A536
3	O-Ring	Rubber
5	Stuffing Box Gasket	Rubber O-ring
6	Hex Head Bolt, 5/8-11 x 1-3/4"	304 Stainless Steel
7	Stuffing Box	Ductile Iron, ASTM A536
8	Bonnet	Ductile Iron, ASTM A536
10	Bonnet Gasket	Rubber
11	Body	Ductile Iron, ASTM A536
12	Stem	Manganese Bronze, ASTM B763, UNS C86700
13	Wedge Nut	Manganese Bronze, ASTM B763, UNS C86700
14	Resilient Wedge	EPDM Rubber Encapsulated Ductile Iron ASTM A536
15	Hex Nut, 5/8-11	304 Stainless Steel
19	Hex Head Bolt, 5/8-11 x 2-1/4"	304 Stainless Steel
49	O-Ring	Rubber
65	Thrust Washer	304 Stainless Steel
69	Wedge Cover	Acetal Polymer
71	Gasket Assy (ALPHA)	NBR or SBR Rubber, ASTM D2000 304 Stainless Steel
72	Gripper (ALPHA)	Ductile Iron, ASTM A536
73	End Ring (ALPHA)	Ductile Iron, ASTM A536
74	Ramp Runner (ALPHA)	Nylon
75	Bolt Guide (ALPHA)	Ductile Iron, ASTM A536
76	T-Head Bolt (ALPHA)	304 Stainless Steel
77	Coupling Nut (ALPHA)	304 Stainless Steel
78	Washer (ALPHA)	304 Stainless Steel

### OPTIONAL MATERIALS ARE AS FOLLOWS

BOLTS and NUTS: 316 Stainless Steel  
STEM: Cast NDZ-S Bronze, ASTM B763, UNS C99500  
STEM: Stainless Steel  
WEDGE NUT: Silicon Bronze, ASTM B584, UNS C87600

Open Direction:  Left (C.C.W.)  Right (C.W.)

### NOTES:

1. Meets requirements of ANSI/AWWA C515 with 250 psig rated working pressure.
2. Fusion-bonded epoxy-coated in accordance with ANSI/AWWA C550.
3. Certified to NSF/ANSI 61 and 372.



**AMERICAN**  
FLOW CONTROL

**THE RIGHT WAY**

AMERICAN Flow Control  
P.O. Box 2727  
Birmingham, Al. 35202-2727  
Phone: 1-800-326-8051  
Fax: 1-800-610-3569  
E-mail: afcsales@american-usa.com

Waterous Company  
125 Hardman Avenue South  
South St. Paul, Mn. 55075-1191  
Phone: 1-888-266-3686  
Fax: 1-800-601-2809  
E-mail: afcsales@american-usa.com

[WWW.AMERICAN-USA.COM](http://WWW.AMERICAN-USA.COM)