

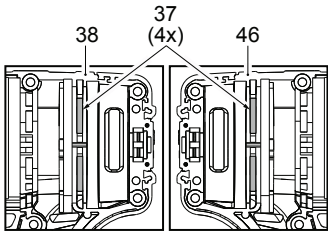


# SERVICE PARTS LIST

**BULLETIN NO.**  
**54-26-2800**

SPECIFY CATALOG NO. AND SERIAL NO. WHEN ORDERING PARTS		REVISED BULLETIN	DATE
<b>M18™ FUEL™ SURGE™ 1/4" HEX HYDRAULIC DRIVER</b>			May 2019
<b>CATALOG NO.</b>	<b>2760-20</b>	<b>STARTING SERIAL NO.</b>	<b>H16A</b>
			<b>WIRING INSTRUCTION</b> <b>SEE PAGE 2</b>

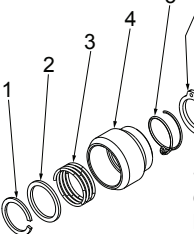
**EXAMPLE:**  
Component Parts (Small #)  
Are Included When Ordering  
The Assembly (Large #).



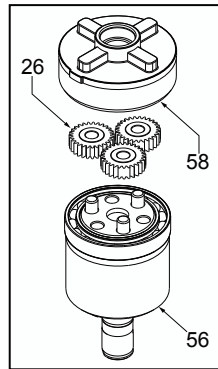
Place Rubber Cushions (37)  
into slots of Housing Halves  
(38 and 46) as shown.



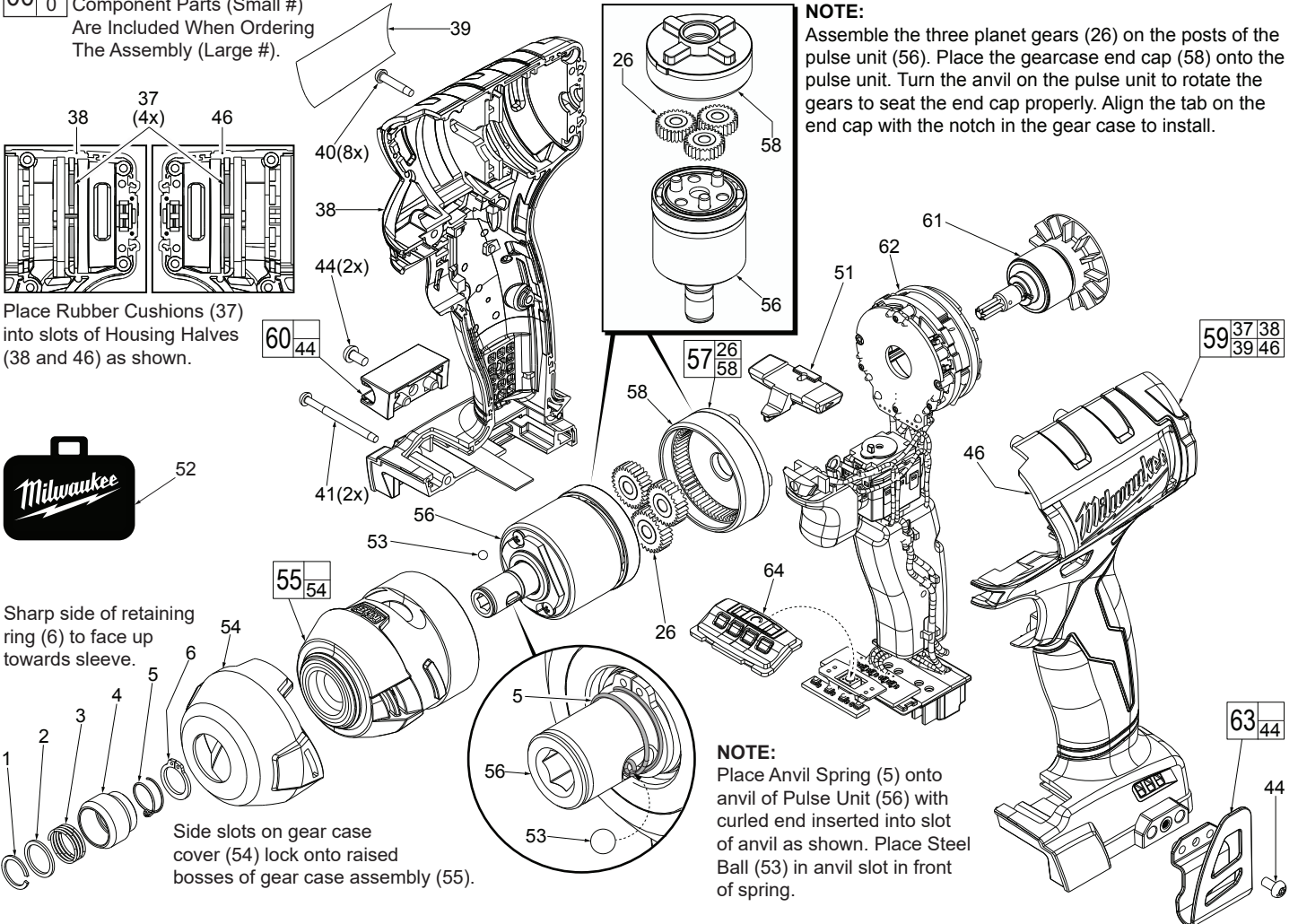
Sharp side of retaining  
ring (6) to face up  
towards sleeve.



Side slots on gear case  
cover (54) lock onto raised  
bosses of gear case assembly (55).



**NOTE:**  
Assemble the three planet gears (26) on the posts of the pulse unit (56). Place the gearcase end cap (58) onto the pulse unit. Turn the anvil on the pulse unit to rotate the gears to seat the end cap properly. Align the tab on the end cap with the notch in the gear case to install.



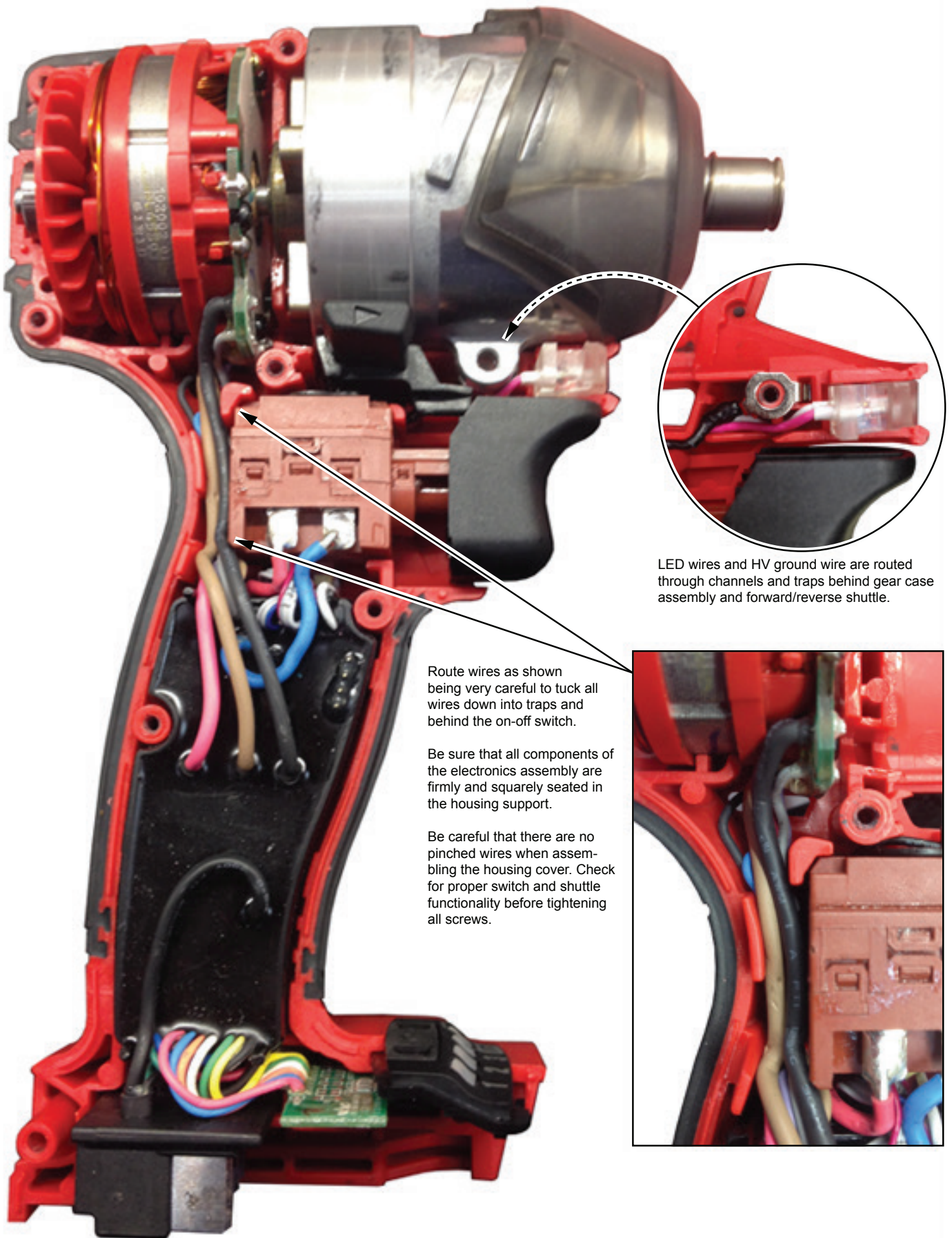
**NOTE:**  
Place Anvil Spring (5) onto  
anvil of Pulse Unit (56) with  
curled end inserted into slot  
of anvil as shown. Place Steel  
Ball (53) in anvil slot in front  
of spring.

FIG.	PART NO.	DESCRIPTION OF PART	NO. REQ.
1	34-60-0725	'C' Retaining Ring	(1)
2	45-88-1881	Washer	(1)
3	40-50-1470	Spring	(1)
4	45-22-2643	Sleeve	(1)
5	40-50-0012	Anvil Spring	(1)
6	34-60-0002	Retaining Ring	(1)
26	-----	Planetary Gear	(3)
37	45-30-0022	Rubber Cushion	(4)
38	-----	Right Housing Halve (Cover)	(1)
39	12-20-0076	Service Nameplate	(1)
40	06-82-7236	M3 x 16mm Pan Hd. ST T-10 TP Screw	(8)
41	06-82-0013	M3 x 38mm Pan Hd. ST T-10 TP Screw	(2)
44	06-82-0130	6-32 x 5/16" Pan Hd. T-15 Machine Scr	(2)
46	-----	Left Housing Halve (Support)	(1)
51	45-24-0013	Forward/Reverse Shuttle	(1)
52	42-55-2753	Blow Molded Carrying Case	(1)
53	02-02-0170	3.5mm Steel Ball	(1)
54	42-92-0054	Gear Case Cover	(1)
55	14-30-0021	Gearcase Assy. with Sleeve & Bearing	(1)
56	14-46-0024	Pulse Unit (Sealed System)	(1)
57	14-30-0121	Gearcase End Cap Assembly w/ Gears	(1)
58	44-66-0011	Gearcase End Cap Assembly	(1)
59	31-44-0049	Housing Kit	(1)
60	43-72-0046	Bit Holder Kit	(1)
61	16-07-0031	Rotor Assembly	(1)

FIG.	PART NO.	DESCRIPTION OF PART	NO. REQ.
62	14-20-0044	Electronics Assembly Consisting of: On-Off Switch, Main PCBA, Stator, LED, HV Protection, Selector PCBA and Battery Connector Block	(1)
63	42-70-0059	Belt Clip Kit	(1)
64	45-24-0017	Speed Selector Assembly	(1)

**FIG. LUBRICATION**  
**Use Type 'J' Grease, No. 49-08-4220 (1 lb. can)**  
57,61 When servicing Pinion of the Rotor Assembly (61), the inside cavity and gearing system of Gearcase End Cap Assy. (57): **90-95% of the old grease must be removed prior to any new grease being added.**

- 4 Place a very light coating of grease on the ID of the sleeve.
- 55 Coat inside sleeve and bearing on front gearcase with grease.
- 56 Place a dab of grease in the ball slot of anvil on pulse unit.
- 26,56 On the rear of the pulse unit, heavily coat the three gears and the pins they ride on with grease.
- 58 Place a heavy coat of grease to teeth on inside cavity of the gear case end cap.
- 61 Coat pinion of rotor assembly with grease.



LED wires and HV ground wire are routed through channels and traps behind gear case assembly and forward/reverse shuttle.

Route wires as shown being very careful to tuck all wires down into traps and behind the on-off switch.

Be sure that all components of the electronics assembly are firmly and squarely seated in the housing support.

Be careful that there are no pinched wires when assembling the housing cover. Check for proper switch and shuttle functionality before tightening all screws.

