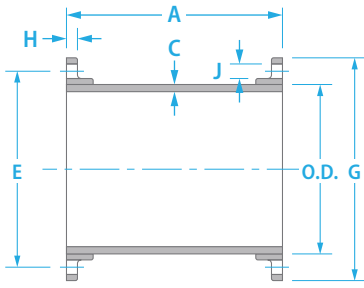
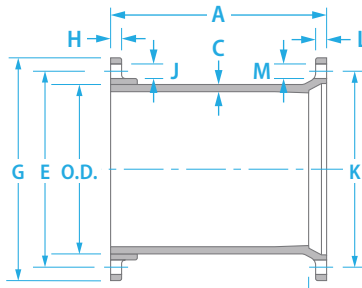


# Fabricated Flange Pipes

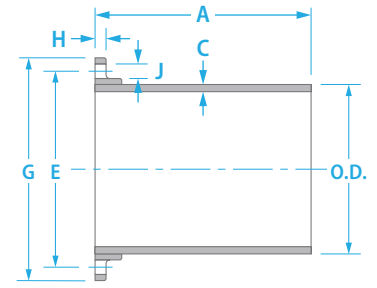
Rev. 02072020



FLG. x FLG.



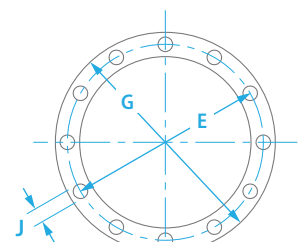
FLG. x M.J.



FLG. x P.E.

Size	A	B	C	O.D.		E	G	H		No. of Flg'd Bolt Holes	J	K		L		No. Of M.J. Bolt HOes	M		P
				Min.	Max.			Min.	Max.			Min.	Max.	Min.	Max.		Min.	Max.	
3	•	•	0.31	3.90	4.02	6.00	7.50	0.63	0.87	4	0.750	6.13	6.25	0.88	0.94	4	0.75	0.81	2.50
4	A	A	0.32	4.74	4.86	7.50	9.00	0.82	1.06	8	0.750	7.44	7.56	0.94	1.00	4	0.875	0.935	2.50
6	S	S	0.34	6.84	6.96	9.50	11.00	0.88	1.12	8	0.875	9.44	9.56	1.00	1.06	6	0.875	0.935	2.50
8	•	•	0.36	8.99	9.11	11.75	13.50	1.00	1.24	8	0.875	11.69	11.81	1.04	1.12	6	0.875	0.935	2.50
10	•	•	0.38	11.04	11.16	14.25	16.00	1.07	1.31	12	1.000	13.94	14.06	1.11	1.19	8	0.875	0.935	2.50
12	R	R	0.40	13.14	13.26	17.00	19.00	1.13	1.37	12	1.000	16.19	16.31	1.17	1.25	8	0.875	0.935	2.50
14	E	E	0.42	15.22	15.35	18.75	21.00	1.19	1.57	12	1.125	18.69	18.81	1.19	1.31	10	0.875	0.935	3.50
16	Q	Q	0.43	17.32	17.45	21.25	23.50	1.25	1.63	16	1.125	20.94	21.06	1.26	1.38	12	0.875	0.935	3.50
18	U	U	0.44	19.42	19.55	22.75	25.00	1.37	1.75	16	1.250	23.19	23.31	1.32	1.44	12	0.875	0.935	3.50
20	I	I	0.45	21.52	21.65	25.00	27.50	1.50	1.88	20	1.250	25.44	25.56	1.38	1.50	14	0.875	0.935	3.50
24	R	R	0.47	25.72	25.85	29.50	32.00	1.69	2.07	20	1.375	29.94	30.06	1.50	1.62	16	0.875	0.935	3.50
30	E	E	0.51	31.94	32.08	36.00	38.75	1.87	2.37	28	1.375	36.82	36.94	1.69	1.81	20	1.125	1.185	4.00
36	D	D	0.58	38.24	38.38	42.75	46.00	2.13	2.63	32	1.625	43.69	43.81	1.88	2.00	24	1.125	1.185	4.00
42	•	•	0.65	44.44	44.58	49.50	53.00	2.37	2.87	36	1.625	50.56	50.68	1.88	2.00	28	1.375	1.435	4.00
48	•	•	0.72	50.74	50.88	56.00	59.50	2.50	3.00	44	1.625	57.44	57.56	1.88	2.00	32	1.375	1.435	4.00
54	•	•	0.81	57.40	57.64	62.75	62.75	2.75	3.25	44	1.875	N/A	N/A	N/A	N/A	N/A	N/A	N/A	N/A
60	•	•	0.83	61.51	61.65	69.25	73.00	2.87	3.37	52	2.000	N/A	N/A	N/A	N/A	N/A	N/A	N/A	N/A
64	•	•	0.87	65.57	65.71	76.00	80.00	3.13	3.63	52	2.000	N/A	N/A	N/A	N/A	N/A	N/A	N/A	N/A

1. Tolerance on length of FLG. x FLG. and FLG. x M.J. pipe shall be  $\pm 0.125''$ .
2. Tolerance on length of FLG. x P.E. shall be  $\pm 0.25''$ .
3. Above material shall meet all applicable sections of ANSI A21.10, A21.15, A21.51, B2.1, B16.1 & AWWA C110, C115, C150, C151 and all revisions thereto.
4. Flanged pipe shall be ductile iron pipe with ductile iron flanges threaded on.
5. Flange pipe is provided with cement lining per AWWA C104/A21.4. If other linings are required, contact your local sales representative.
6. The mechanical joint bell for 30" and 36" sizes of ductile iron pipe have thicknesses different from those shown in ANSI A21.11, which are based on gray iron pipe. These reduced thicknesses provide a lighter-weight bell which is compatible with the wall thickness of ductile iron pipe.
7. Submitted material only. Consult your engineer for application.
8. 250 lb. faced and drilled flanges available upon request.
9. Flange-Tyte gaskets are included with all 14" or larger ductile iron flanged joint products supplied by U.S. Pipe. These are required during installation, and failure to use these gaskets could result in voiding the manufacturer's warranty. Refer to product data sheets for additional information.



FLG. DETAIL