

## CODE NUMBER

3873073

## DESCRIPTION

Vitreous China Wall-Mounted Backsplash Lavatory with SloanTec® Glaze.

## DETAILS

- Centerset: 4"
- Nominal Dimensions: 18 ¾" x 20 ¾" x 12 ¼" (464 x 527 x 311mm)

## FEATURES

- White Vitreous China
- Permanent SloanTec™ hydrophobic antimicrobial glaze inhibits the growth and buildup of germs, bacteria, mold, mildew and mineral scale on the surfaces
- Wall mounted with 4" backsplash
- Self-draining deck area with back and side splash shields
- Front overflow
- 4" (102mm) centerset
- Carrier not included
- Mounting hardware included
- 20 ¾" x 18 ¾" (527 mm x 464 mm)

## DOWNLOADS

- [Sloan SS-3003 Installation Instructions](#)
- [SS/ST/SU/WETS/WEUS Fixtures Repair and Maintenance Guide](#)
- [Vitreous China Lavatories Repair and Maintenance Guide](#)
- [Additional Downloads](#)



## COMPLIANCES & CERTIFICATIONS



BREEAM®  
MATERIALS



(BAA Compliant, BREEAM Materials Credit, EPD, HPD, LEED Materials & Resources EPD Credit, LEED Materials & Resources HPD Credit, Satisfies LEED Credits)

## NOTES

All information contained within this document subject to change without notice.

All vitreous china dimensions shown in these drawings are nominal and not to scale. Dimensions can vary within the tolerances established in the governing ASME A112.19.2/CSA B45.1 standard. It is important to consider this when planning rough-in and plumbing layouts.

## WARRANTY

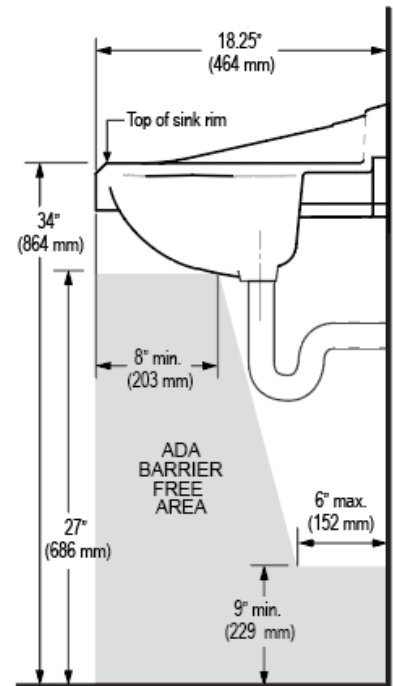
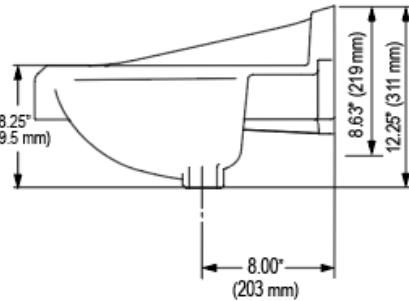
[View Warranty Information](#)

Sloan 10500 Seymour Ave, Franklin Park, IL 60131

Phone: 800.982.5839 • Fax: 800.447.8329 • [sloan.com](http://sloan.com)

The technical drawing consists of two views of the ADA Combi unit:

- Top View:** Shows a square unit with overall dimensions of 20.75" (527 mm) by 18.25" (464 mm). The mounting holes are spaced 16.75" (426 mm) apart horizontally and 15.25" (388 mm) apart vertically. The central drain outlet has a diameter of 1.75" (45 mm). The unit is 4" (102 mm) deep.
- Side View:** Shows the unit's profile with a total height of 31" (787 mm). The mounting holes are 10 1/4" (260 mm) from the top and bottom edges. The unit is 4" (102 mm) deep. The central drain outlet is 1 1/4" (32 mm) in diameter. The unit is mounted to a finished floor with a water supply line and a drain outlet.



Page 2 of 2