

## 19.0 A2 Replacement Parts List

### A2/M2 Replacement Parts

Pump Head Components		Part No.	QTY Req'd
<b>1</b>	Spacer, Rear	90011-217	1
<b>2</b>	Complete Roller Assembly		1
	ND	A2-SND-R	
	NEE / NGG	A2-SNGG-R	
	TH	A2-STH-R	
	GE / GG / G2G /GH	A2-SGE-R	
<b>3</b>	Tubing ( <b>Reference Tubing Matrix</b> )		1
<b>4</b>	Pump Head Cover (includes front spacer)	A2-SXX-C	1
<b>5</b>	Thumb Screws	90011-183	4
<b>6</b>	Tube Nut, Compression 3/8" Tubing*	C-330-6	2
<b>7</b>	Spacer, Front	90011-217	1

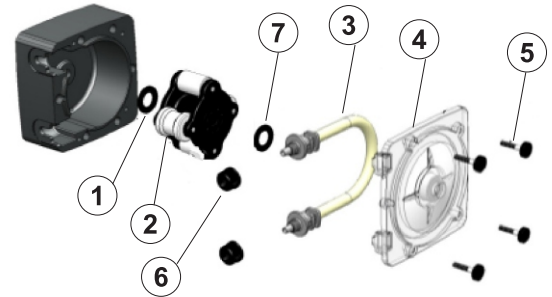
\*Tube nuts for 'S' type tubing only

Quick Disconnect Fittings*		Part No.	QTY Req'd
<b>8</b>	Quick Disconnect		1
	.50" Barb FKM	KIT-QBV	
	.50" Barb EP	KIT-QBE	
	.50" Barb Aflas	KIT-QBA	
	.50" M/NPT FKM	KIT-QMV	
	.50" M/NPT EP	KIT-QME	
	.50" M/NPT Aflas	KIT-QMA	
	3/8" OD, 1/4" ID Tube Compression, FKM	KIT-QSV	
	3/8" OD, 1/4" ID Tube Compression, EP	KIT-QSE	
	3/8" OD, 1/4" ID Tube Compression, Aflas	KIT-QSA	

\*Only available for Q tubes

Miscellaneous Parts*		Part No.	QTY Req'd
<b>A</b>	Stainless Steel Mounting Bracket	72000-379	1
<b>B</b>	Stainless Steel Mounting Bracket (Extended)	72000-380	1
<b>C</b>	Rubber Feet	90003-561	4
<b>D</b>	Tube Installation Tool	90002-278	1

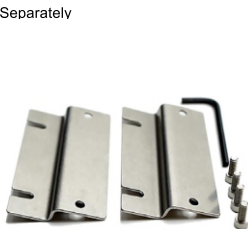
\*Sold Separately



\*Pump Head not for sale. For more information please contact a local sales representative.



**8**



**A**



**B**



**C**



**D**

## 19.1 Tube Matrix

<b>A2</b>	Tubing				
<b>Inlet/Outlet Connection Size, Connection Type, Connection Material</b>					
<b>S</b>	3/8" OD x 1/4" ID Tube Compression Fitting, Natural PVDF (Kynar)				
<b>M</b>	1/2" Male NPT Fitting, Natural PVDF (Kynar)				
<b>B</b>	1/2" Hose Barb, Natural PVDF (Kynar), available for ND, NEE, NGG, and G2G only				
<b>C</b>	1/2" - 3/4" Tri-clamp connections, Natural PVDF (Kynar), available for ND, NEE, NGG, and G2G only				
<b>Q</b>	Quick Disconnect, Natural PVDF (Kynar), available for ND, NEE, NGG, and G2G only (valves sold seperately)				
<b>MB</b>	1/2" Male BSPT Fitting, Natural PVDF (Kynar)				
<b>Pump Tube Material, Pump Tube Size</b>					
<b>GE</b>	Flex-A-Thane® .125 ID	<b>ND</b>	Flex-A-Prene® .075 ID		
<b>GG</b>	Flex-A-Thane® .187 ID	<b>NEE</b>	Flex-A-Prene® .093 ID		
<b>G2G</b>	Flex-A-Thane® .187 ID (dual tube)	<b>NGG</b>	Flex-A-Prene® .187 ID		
<b>GH</b>	Flex-A-Thane® .312 ID	<b>TH</b>	Flex-A-Chem® .250 ID		
<b>A2</b>	-	<b>S</b>	<b>GE</b>	-	<b>T</b> Tube Sample Model Number

## Output Specifications

Tube Material / Size	Feed Rate			Max Pressure	Max Temperature
	GPH	LPH	mL/Min	PSI (bar)	°F (°C)
<b>Flex-A-Thane® Tube</b>					
GE	Up to 4.0	Up to 15.2	Up to 253	65 (4.50)	130 (54)
GG	Up to 9.3	Up to 35.2	Up to 587	65 (4.50)	130 (54)
G2G	Up to 14.98	Up to 56.7	Up to 945	65 (4.50)	130 (54)
GH	Up to 21.23	Up to 80.4	Up to 1340	65 (4.50)	130 (54)
<b>Flex-A-Prene® Tube</b>					
ND	Up to 1.7	Up to 6.5	Up to 108	125 (8.60)	185 (85)
NEE	Up to 4.4	Up to 16.8	Up to 280	110 (7.60)	185 (85)
NGG	Up to 17.2	Up to 65	Up to 1085	110 (7.60)	185 (85)
<b>Flex-A-Chem® Tube</b>					
TH	Up to 14.3	Up to 54	Up to 900	50 (3.45)	130 (54)