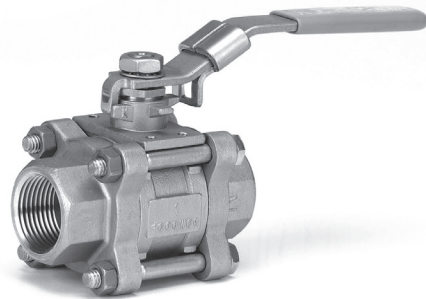


30 Series Ball Valve
Milwaukee Valve Company
30CC/CS/SS



3-Piece Full Port Ball Valve

Features and Benefits

- Locking Lever for Safety Lockout
- Multiple V-ring Stem Packing Arrangement for Longer Packing Life
- Vent Hole in Ball Slot for Cavity Venting
- Mounting Pad for Easy Actuation
- TFE/Graphite Body Seal
- NACE Compliant for Sour Gas Service
- Blow-out Proof Stem
- Cantilever Seat Design for Low Operating Torque
- Meets ASME, MSS-SP and ASTM Specifications

Operators Available

- Locking Lever Handle and Ovals
- Pneumatic and Electric Actuation

Materials of Construction

- Body: WCB Carbon Steel or CF8M Stainless Steel
- Ball: 316 Stainless or Carbon Steel Plated
- Stem: 316 Stainless or Carbon Steel Plated
- Seats: PTFE, RPTFE, Multi-Fil
- Packing: PTFE/Graphite
- Handles: Stainless Steel/Carbon Steel

Specifications and Product Range

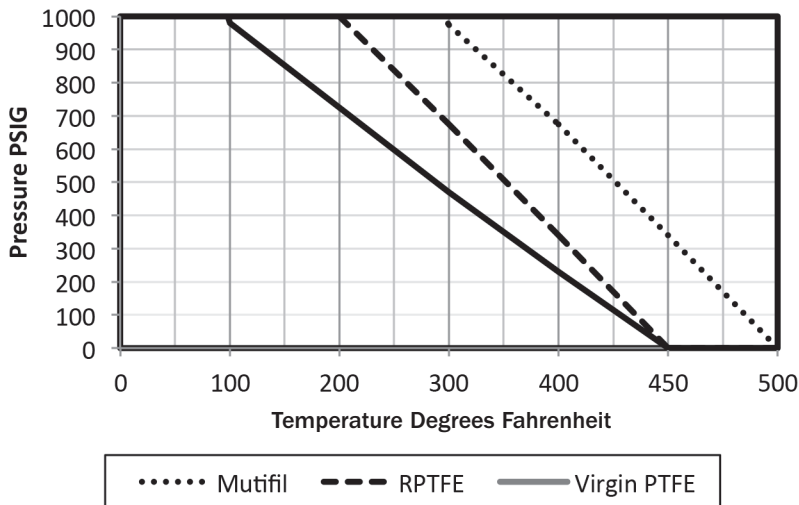
- Valve Sizes 1/4" through 2"
- Meets MSS-SP-110
- Valves Meet NACE MRO175
- Socket Weld and NPT Connections

Pressure Ratings:	psi
1/4" Through 2"	1000

Valve is Rated 150 psi Steam @ 365°F with RPTFE seats. Multi-Fil PTFE Steam Applications > 150 psi.

Torque & Cv Values

VALVE SIZE	MAXIMUM BREAKAWAY TORQUE (in lbs)	Cv(GPM)
1/4-3/8	30	9
1/2	50	10
3/4	70	31
1	125	49
1-1/4	210	85
1-1/2	360	110
2	600	360



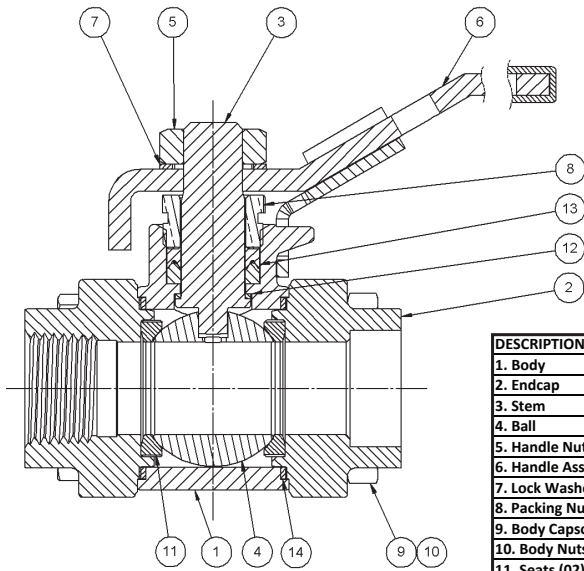
How to Order Milwaukee Valve 30 Series Three Piece Ball valve								
Series:	Body:	Ball/Stem Material:	End Connection Type:	Port Size:	Seat Material:	External Options:	Internal Options:	Size
30-Three Piece 1000 WOG	C = Carbon Steel (WCB) S = Stainless Steel (CF8M)	S = Stainless Steel (316) C = Carbon Steel Plated	0 = NPT Female 1 = Socket-Weld* 6 = FNPT/Socket-Weld* *Not available in 1/4" and 3/8"	F = Full Port	01 = Virgin PTFE 02 = Reinforced PTFE (15% Gls.) 03 = Multi-Fil PTFE (Steam Seat 250 psi)	LL = Stainless Latch-Lock Handle LS = Stainless Latch-Lock Handle-Spring-Loaded LO = Locking Stainless Oval Handle-Spring-Loaded OS = Stainless Oval Handle XH = Extended Handle (2") XLH = Extended Handle (4 1/2")	AD = Assembly Dry GB = Grounded Ball GS = Grounded Stem VB = Vented Ball	014 - 1/4" 038 - 3/8" 012 - 1/2" 034 - 3/4" 100 - 1" 114 - 1 1/4" 112 - 1 1/2" 200 - 2"
Example Product Numbers								
30CSOF-02-LL - 34 (3/4" Three Piece Full Port Carbon Steel Body, Stainless Trim, Female NPT End Pieces, RPTFE Seats, SS Latch-Lock Handle)								
30CSOF-02-LL-VB - 34 (3/4" Three Piece Full Port Carbon Steel Body, Stainless Trim, Female NPT End Pieces, RPTFE Seats, SS Latch-Lock Handle, Vented Ball)								

Teflon is a registered trademark of Dupont.

The information presented on this sheet is correct at time of publication. Milwaukee Valve reserves the right to change design and/or materials without notice. For our Installation, Operation and Maintenance Manual and the most current product information go to www.milwaukeevalve.com.
 ⚠ State of California Prop 65 **WARNING: Cancer and Reproductive Harm.** For more information visit www.p65warnings.ca.gov.

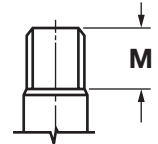
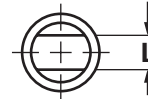
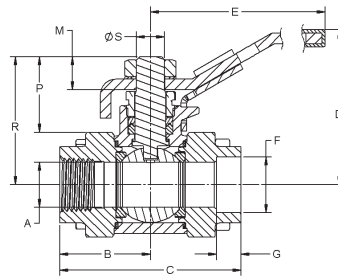
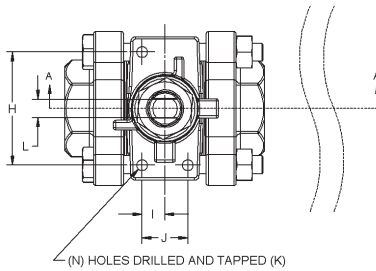
30CC/CS/SS

3-Piece Full Port Ball Valve



MATERIAL LIST

DESCRIPTION	30CCOF-02	30CSOF-02	30SSOF-02
1. Body	Carbon Steel ASTM A216, WCB	Carbon Steel ASTM A216, WCB	Stainless Steel ASTM A351/744, CF8M
2. Endcap	Carbon Steel ASTM A216, WCB	Carbon Steel ASTM A216, WCB	Stainless Steel ASTM A351/744, CF8M
3. Stem	Carbon Steel AISI 1045	Stainless Steel ASTM A276, Type 316	Stainless Steel ASTM A276, Type 316
4. Ball	Carbon Steel ASTM A29 1020	Stainless Steel ASTM A276, Type 316	Stainless Steel ASTM A276, Type 316
5. Handle Nut	300 Series Stainless Steel	Stainless Steel ASTM A276, Type 316	Stainless Steel ASTM A276, Type 316
6. Handle Assembly	AISI 1010 Steel Zinc-Plated	AISI 1010 Steel Zinc-Plated	Stainless Steel ASTM A276, Type 304
7. Lock Washer	Stainless Steel ASTM A479, Type 410	Stainless Steel ASTM A479, Type 410	Stainless Steel ASTM A479, Type 410
8. Packing Nut	Carbon Steel AISI 12L14	Stainless Steel ASTM A276, Type 316	Stainless Steel ASTM A276, Type 316
9. Body Cap screws	SAE J429 Gr.8 Zinc-Plated	SAE J429 Gr.8 Zinc-Plated	Stainless Steel ASTM F593, Type 304
10. Body Nuts	SAE J429 Gr.8 Zinc-Plated	SAE J429 Gr.8 Zinc-Plated	Stainless Steel ASTM F593, Type 304
11. Seats (02)	15% Glass-Filled, Reinforced PTFE	15% Glass-Filled, Reinforced PTFE	15% Glass-Filled, Reinforced PTFE
12. Thrust Washer	25% Glass-Filled, Reinforced PTFE	25% Glass-Filled, Reinforced PTFE	25% Glass-Filled, Reinforced PTFE
13. Packing	PTFE	PTFE	PTFE
14. Body Seal	PTFE (01) / Graphoil (03)	PTFE (01) / Graphoil (03)	PTFE (01) / Graphoil (03)



DIMENSIONS

N = NUMBER OF ACTUATOR MOUNTING PAD HOLES

SIZE	1/4" IN	MM	3/8" IN	MM	1/2" IN	MM	3/4" IN	MM	1" IN	MM	1-1/4" IN	MM	1-1/2" IN	MM	2" IN	MM
A	0.44	11.18	0.56	14.22	0.69	17.5	0.75	19.1	1.00	25.4	1.25	31.8	1.50	38.1	2.00	50.8
B	1.40	35.6	1.40	35.6	1.40	35.6	1.72	43.7	1.94	49.3	2.38	60.5	2.62	66.5	3.05	77.5
C	2.81	71.4	2.81	71.4	2.81	71.4	3.44	87.4	3.87	98.3	4.75	120.7	5.24	133	6.10	154.9
D	1.83	46.5	1.83	46.5	2.52	64.0	2.79	70.9	2.93	74.4	3.18	80.8	3.37	85.6	3.60	91.4
E	3.88	98.6	3.88	98.6	5.88	149.0	5.88	149.0	5.88	149.0	7.75	197.0	7.75	197.0	7.75	197.0
F*	-	-	-	-	0.86	21.97	1.08	27.31	1.34	34.04	1.69	42.8	1.93	48.9	2.42	61.37
G*	-	-	-	-	0.50	12.7	0.56	14.2	0.68	17.3	0.81	20.6	0.87	22.1	1.06	26.9
H	1.58	40.1	1.58	40.1	1.58	40.1	1.58	40.1	1.58	40.1	1.46	37.1	1.48	37.59	1.51	38.35
I	0.32	8.1	0.32	8.1	0.32	8.1	0.32	8.1	0.32	8.1	0.56	14.2	0.76	19.3	1.05	26.7
J	0.64	16.3	0.64	16.3	0.64	16.3	0.64	16.3	0.64	16.3	1.13	28.7	1.53	38.9	2.10	53.3
K	10-24		10-24		10-24		10-24		10-24		1/4-20		1/4-20		1/4-20	
L	0.27	6.83	0.27	6.83	0.27	6.83	0.27	6.83	0.27	6.83	0.35	8.86	0.35	8.86	0.35	8.86
M	0.51	13.0	0.51	13.0	0.51	13.0	0.49	12.5	0.49	12.5	0.60	15.2	0.60	15.2	0.60	15.2
N	3		3		3		3		3		3		4		4	
P	0.95	24.0	0.95	24.0	1.25	31.75	1.25	31.75	1.25	31.75	1.38	34.93	1.50	38.10	1.50	38.10
R	1.63	41.40	1.63	41.40	1.97	50.04	2.30	58.37	2.47	62.79	2.90	73.74	3.14	79.73	3.57	90.63
S	0.47	11.94	0.47	11.94	0.47	11.94	0.47	11.94	0.47	11.94	0.59	15.0	0.59	15.0	0.59	15.0
	LBS	KG	LBS	KG	LBS	KG	LBS	KG	LBS	KG	LBS	KG	LBS	KG	LBS	KG
WT.	1.75	0.79	1.72	0.78	1.53	0.69	2.51	1.14	3.27	1.48	5.24	2.38	7.32	3.32	11.91	5.40

* These dimensions apply only to socket-weld end valves.

The information presented on this sheet is correct at time of publication. Milwaukee Valve reserves the right to change design and/or materials without notice. For our Installation, Operation and Maintenance Manual and the most current product information go to www.milwaukeevalve.com.

⚠ State of California Prop 65 **WARNING: Cancer and Reproductive Harm.** For more information visit www.p65warnings.ca.gov.

MILWAUKEE VALVE

