



ADA Transfer Showers

ONE-PIECE GELCOAT
OR SOLID SURFACE

AQUARIUS
BATHWARE™

G 3682 BF

OD: 40.5" x 39.5" x 77"

ID: 36" x 36" Center Point

Weight: 225

Load Factor:

Handed By: Valve Wall L/R

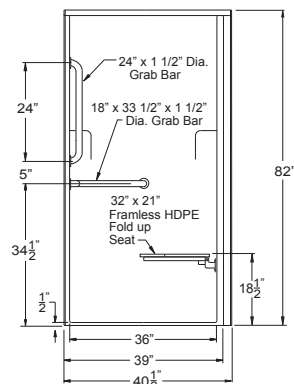
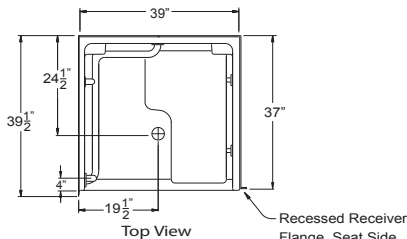
This unit complies with ANSI Z124.2,
ICC/ ANSI A117.1, ASTM F462, ASTM E84,
UPC, HUD, ADA, ABA, SBCCI, NAHB, UFAS.

Warranty: Gelcoat models have a 3 year limited warranty.
Acrylic models have a 5 year limited warranty. Pumps, parts,
and accessories 1 year limited warranty. For further details
please refer to the complete warranty section.

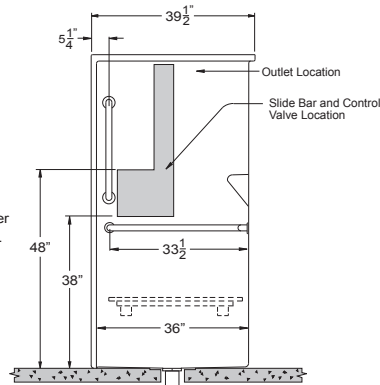
Due to the nature of the materials, dimensions may vary
+/- 1/2".



Photograph Illustrates Package One - Handed by
Valve Wall Right



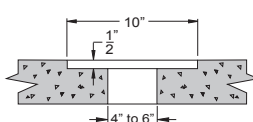
NOTE: Due to the nature of the materials,
dimension may vary +/- 1/2".



DETAIL OF DRAIN CORE AREA

4" To 6" Diameter Drain Core
Through Slab.

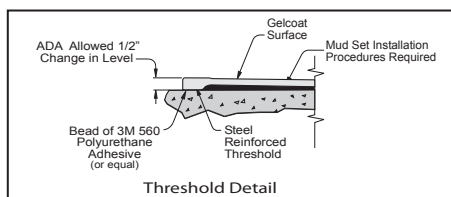
10" Diameter x 1/2" Deep
Recess Around Core



FRAMING DIMENSIONS

A	B	C	D	E	F
39 1/4"	37"	25 1/2"	11 1/2"	39 1/2"	15"

• Refer to pages 67 & 68 to view corresponding
framing detail.



PKG ONE - ADA/ANSI: G 3682 BF

- .5" No Recess BF Threshold
- Handed by Valve Wall L/R
- Mudset
- White Polyester Gelcoat Finish

Factory Installed Accessories (Valve not included):

- L-Bar - 33.5" x 18" x 1.5" Smooth SS
- S-BAR - 24" x 1.5" Smooth SS
- 32" X 21" Frameless HDPE Fold Up Seat
- 1" OD 18 Gauge SS Curtain Rod with Rod Cups

For ADA compliance, installed accessories must include L-Bar, L-Seat, pressure
balancing mixing valve, hand-held shower with slide bar, vacuum breaker and
60" hose. An additional vertical S-Bar is required for ANSI compliance. Unit
and accessories installed per ADA/ANSI and Praxis Installation and warranty
guidelines.

BUILD TO ORDER BASE PLUS ACCESSORIES

BASE UNIT 1: G 3682 BF

- Specify Threshold Height
- Handed by Valve Wall L/R
- Mudset
- Reinforced for Standard Accessories

BASE UNIT 2: G 3682 BF EB

- .625" No Recess BF Threshold
- Handed by Valve Wall L/R
- EasyBase™
- Reinforced for Standard Accessories

BASE UNIT OPTIONAL ACCESSORIES

Standard Finish - Polyester Gelcoat:

- White
- Bone
- Biscuit

Premium Finish - CenturyStone™ Solid Surface:

- Solid - White, Bone or Biscuit
- Natural - Granite Finishes

Grab Bars

- S-Bar - 24" x 1.5" Smooth SS
- S-Bar - 24" x 1.25" Smooth White CC
- S-Bar - 24" x 1.25" Peened SS
- L-Bar - 33.5" x 18" x 1.5" Smooth SS
- L-Bar - 33.5" x 18" x 1.25" Smooth White
- L-Bar - 33.5" x 18" x 1.25" Peened SS

Inside Curtain Line Seats (Revised ADA-ABA 2004)

- 32" X 21" Frameless White HDPE Fold Up Seat
- 32" X 21" Frameless White Padded Fold Up Seat
- 32" X 21" Frameless Woodgrain Phenolic Fold Up Seat

Full Depth of Stall Seats (ADAAG 1991-2002)

- 34.5" X 21" Frameless White HDPE Fold Up Seat
- 34.5" X 21" Frameless White Padded Fold Up Seat
- 34.5" X 21" Frameless Woodgrain Phenolic Fold Up Seat

Factory Modifications

- Valve Drilling - Specify Hole Size
- .5" No Recess BF Threshold
- 2" BF Threshold (Not Available with EasyBase™)
- .625" No Recess BF Threshold (Available with EasyBase™ only)
- Recessed Receiver Flange
- Wood Reinforcement for HUD
- Full Wood Reinforcement
- ArmorShield P3 Protection
- Install 30" Slide Bar / HS Kit
- Install SS Soap Dish - Recessed
- Install Standard Symmons Valve Package
- Nurse Call Box Drilling - Specify Location
- 1" OD 18 Gauge SS Curtain Rod with Rod Cups
- 1" OD 18 Gauge White Curtain Rod with Rod Cups
- Curtain Rod U-Cup Holder - Pair

Field Installed Accessories (Shipped Loose)

- No Caulk Drain - Chrome
- Semi-Permanent Threshold
- Collapsible Dam - White 42"
- Caps for Collapsible Dam - Pair
- Curtain - Premium 42" x 72" White Nylon Weighted
- Curtain - Heavy Duty 42" x 72" White Vinyl Weighted



HDPE (high density polyethylene) seats used by Praxis Companies, LLC contain recycled materials.