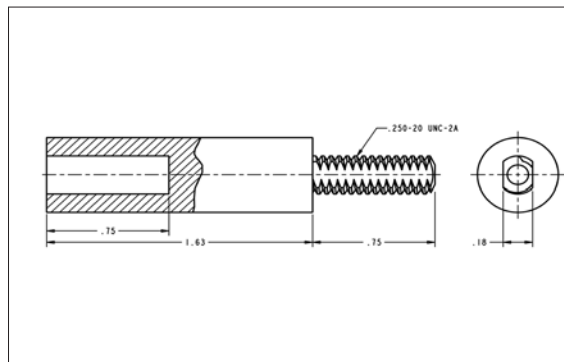


# DAMPER SHAFT EXTENSION



## Product Data Sheet



### Description

Used to extend the handle when attached to the E-708.

### Features

Single Piece - all metal construction

Allows for damper adjustment in insulated low-pressure ductwork.

### Standard Construction

Manufactured from Zinc Plated carbon steel  
Threading: 1/4"-20

### Packaging

Item	Qty Per Box
DH5050	100

### Guarantee

All Elgen products are guaranteed by Elgen Manufacturing against defective material.

Elgen Manufacturing  
10 Railroad Ave, Closter NJ 07624  
Tel: 800.503.9805 :: Fax: 201.964.9030  
info@elgenmfg.com :: www.elgenmfg.com

ALL STATED SPECIFICATION ARE SUBJECT TO CHANGE WITHOUT NOTICE OR OBLIGATION