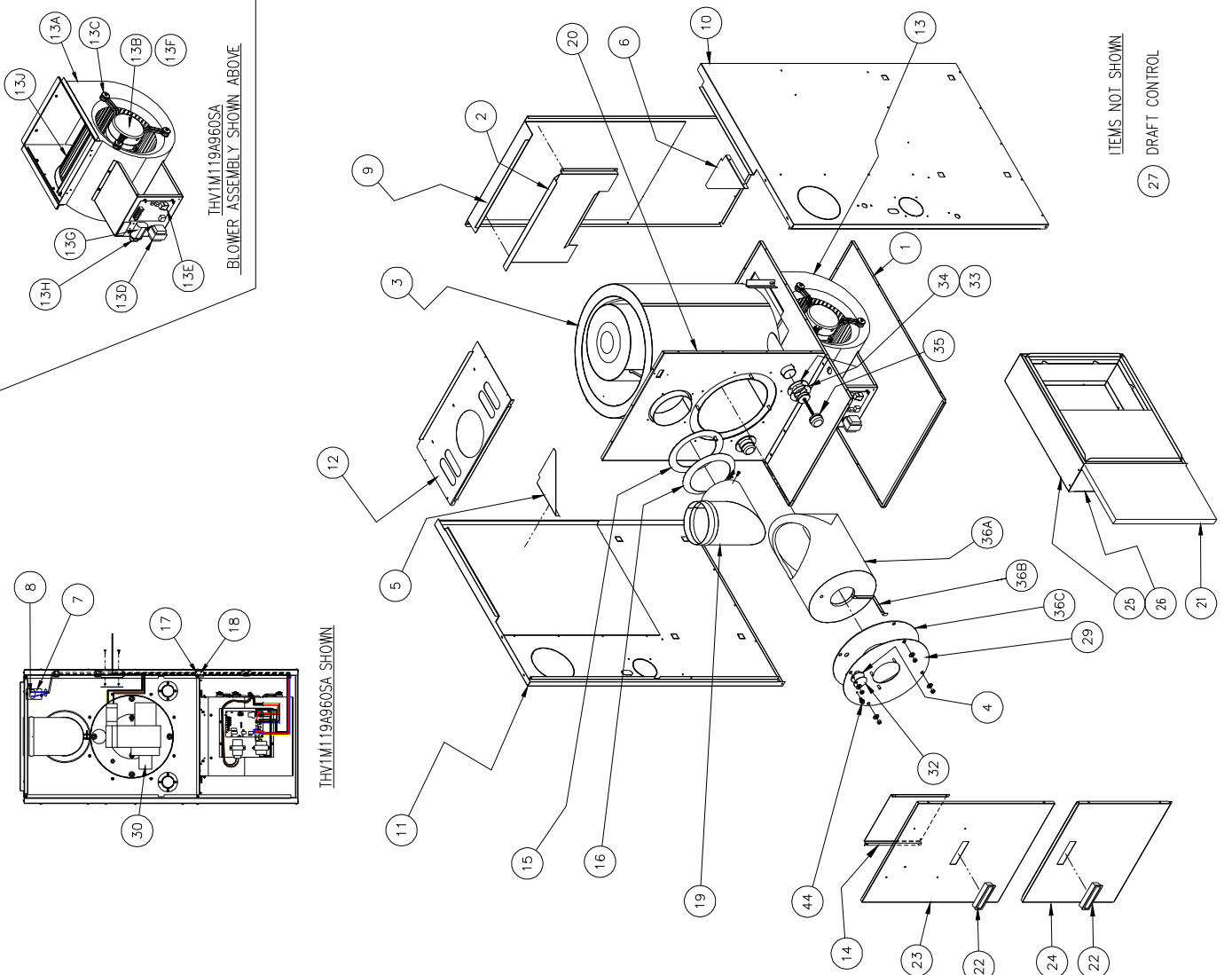


Appendix – A

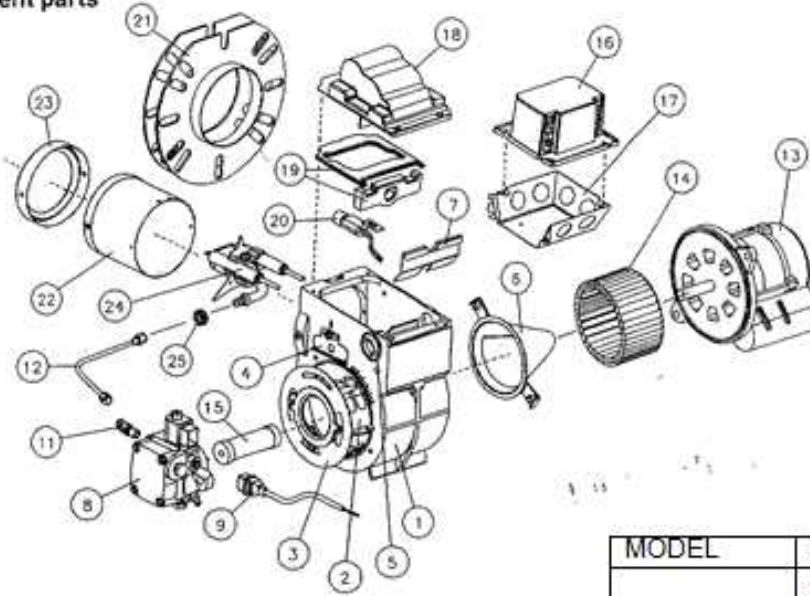
Replacement Parts for THV1M119A*

ITEM	UNIT PARTS DESCRIPTION	THV1M119A960SA		THV1M119A9755A	
		PART NO.	QTY.	PART NO.	QTY.
1	BASE	R12090	1	R12090	1
2	HEAT SHIELD/BAFFLE, REAR	R12153	1	R12153	1
3	HEAT EXCHANGER	R32127	1	R32127	1
4	GASKET, OVERFIRE DRAFT COVER	R330343	1	R330343	1
5	BAFFLE, LEFT SIDE CASING	R12155	1	R12155	1
6	BAFFLE, RIGHT SIDE CASING	R12154	1	R12154	1
7	LIMIT SWITCH	R350279	1	R350279	1
8	INSULATOR BOOT	R350036	1	R350036	1
9	CASING, REAR	R612160-11	1	R612160-11	1
10	CASING, RIGHT SIDE	R612158-11	1	R612158-11	1
11	CASING, LEFT SIDE	R612157-11	1	R612157-11	1
12	PANEL, TOP FRONT	R612096-11	1	R612096-11	1
13	BLOWER SUB-ASSEMBLY	RS0054198	1	RS0054199	1
13A	BLOWER, 12-11T HSG. 11-11 WHL, NARROW BLOCK OFF	RS0054519	1	RS0054519	1
13B	MOTOR REPLACEMENT KIT (PSC) (350359 3/4 HP 4SP)	RAOPS7755	1	-	-
13C	MOTOR BRACKET ASSEMBLY	RAOPS7670	1	RAOPS7670	1
13D	TRANSFORMER	R350464	1	R350464	1
13E	OIL FURNACE CONTROL	R350922	1	R350922	1
13F	MOTOR 1 HP 5SP (C1M)	-	-	R350280	1
13G	CAPACITOR 15/370	R350064	1	-	-
13H	INSULATOR BOOT	R350036	1	-	-
13J	BLOWER WHEEL 11-11	R340109	1	R340109	1
14	HEAT SHIELD	R12156	1	R12156	1
15	GASKET, FLUE COLLAR	R330006	1	R330006	1
16	DRAW COLLAR	R14132	1	R14132	1
17	WIRE HARNESS, VESTIBULE	R350926	1	R350926	1
18	WIRE HARNESS, BLOWER	R350927	1	R350927	1
19	ELBOW	R36059	1	R36059	1
20	PANEL, FRONT SEPARATOR	R612141	1	R612141	1
21	FILTER, 20 X 25 X 1	R370051	1	R370051	1
22	DOOR PULL	R320157	2	R320157	2
23	DOOR, FRONT	R612161-11	1	R612161-11	1
24	DOOR, BLOWER ACCESS	R612159-11	1	R612159-11	1
25	FILTER RACK WRAP ASSY	R628962-11	1	R628962-11	1
26	FILTER RACK FRONT ASSY	R628964-11	1	R628964-11	1
27	DRAFT CONTROL	R370106	1	R370106	1
28					
29	PLATE, BURNER MOUNTING	R11701	1	R11701	1
30	OIL BURNER, BECKETT	R380787	1	R380787	1
31					
32	COVER, OVER-FIRE DRAFT OPENING	R18556	1	R18556	1
33	GASKET, TRIM PLATE	R330215	2	R330215	2
34	TRIM PLATE	R618553	2	R618553	2
35	CLEAN-OUT PLUG ASSEMBLY	RS0054481	2	RS0054481	2
36	COMBUSTION CHAMBER REPLACEMENT KIT	RAOPS7756	1	RAOPS7756	1
36A	COMBUSTION CHAMBER, SOFT	R380753	1	R380753	1
36B	CHAMBER RETAINER	R18657	1	R18657	1
36C	GASKET, BURNER MOUNTING PLATE	R330354	1	R330354	1



TP2701 AFG BECKETT BURNER, (R380787)

Replacement parts



MODEL	NOZZLE SIZE	PART #
	.85 x 80° A	R380381
	1.0 X 80° A ¹	R380368
	1.10 X 80° A	R380369

ITEM	DESCRIPTION	BECKETT PART #	TP PART #
1	BURNER HOUSING ASSY.	5874GY	
2	AIR BAND ASSY, SET @ 0	3625A	
3	AIR SHUTTER 4 - SLOT, SET @ 5	3709	
4	ESCUTCHEON PLATE	3493	
	SCREW	4292	
5	HOLE PLUG	2139	
6	AIR GUIDE	31231U	
7	LOW FIRING RATE BAFFLE	N/A	N/A
8	PUMP 120PSI	21844	R380674
	SOLENOID	21755	R380654
9	VALVE CORD SET	21807U	R380653
11	PUMP ELBOW	2256	R320815
12	CONNECTION TUBE	5394	R380268
13	MOTOR 1/7 HP 3450 RPM	21805E	R380644
14	BLOWER WHEEL 4 1/4 X 2 7/16 TAB	2999	R380271
15	COUPLING	2454	R380241
16	PRIMARY CONTROL GENISYS	7505B1500	R350431
17	ELECTRICAL BOX	5770	
18	IGNITER W/ GASKETS	51771U	R380645
19	IGNITER GASKET KIT	51304	
20	CAD CELL w/ Socket C554A1919	7006U	R350104
21	FLANGE WELDED TO TUBE	N/A	N/A
	GASKET	3616	R380270
22	AIR TUBE COMBINATION W/FLG, GUN ASSY & HEAD	58020247	R380761
	BLAST TUBE ONLY	AF60YBHS	
23	HEAD W/ SHIELD KIT F6	51361	R380762
24	ELECTRODE NOZZLE ASSY	NL60	
	ELECTRODES PAIR	5780	R380269
	STATIC PLATE, 2 3/4U	3383	
25	SPLINED NUT	3666	R320121
	BULK HEAD FITTING	3488	R320120

¹ Nozzle installed in burner.

3/11/14

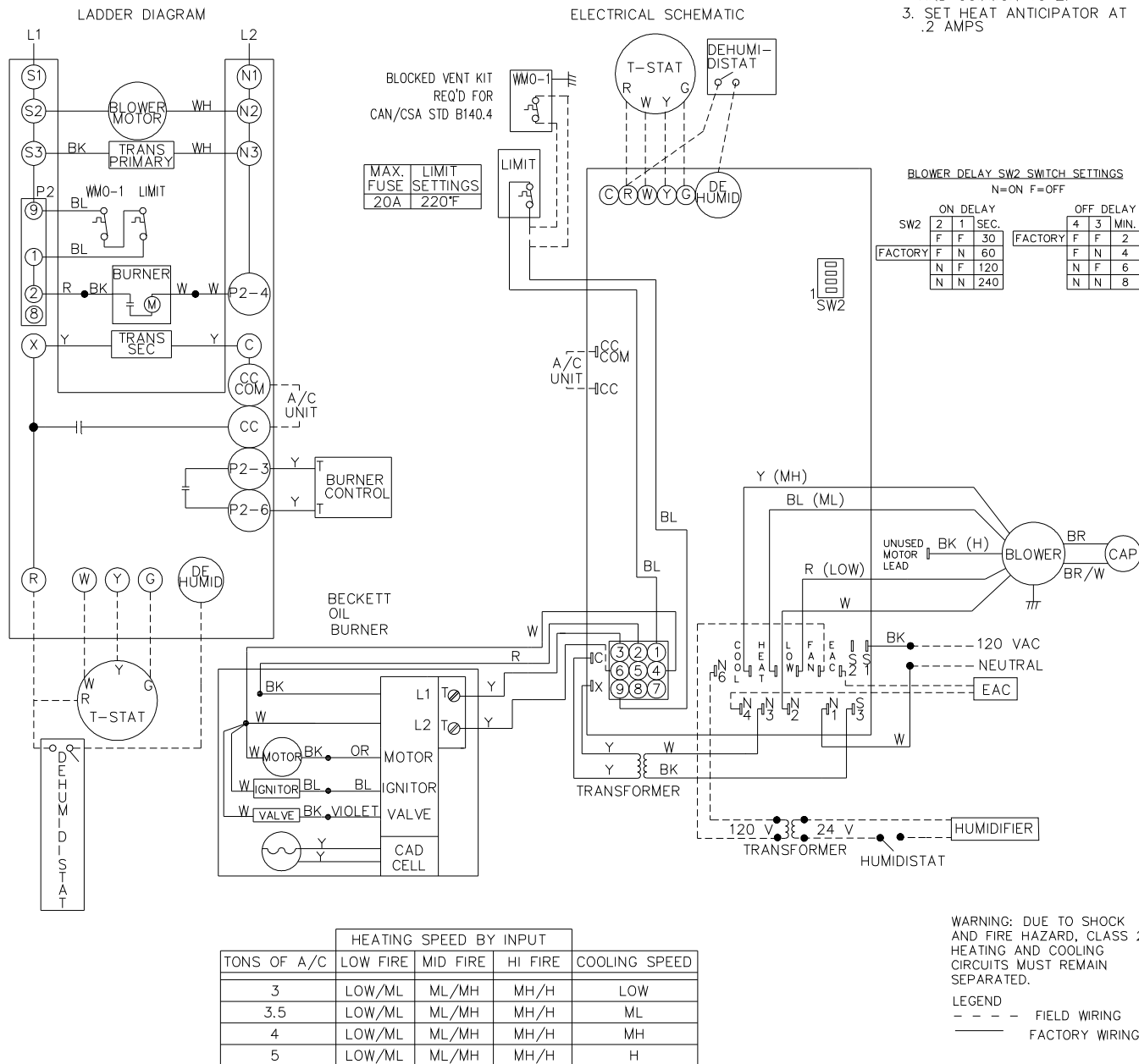
Appendix – B

THV1M119A960SA PSC Wiring Diagram

WD-639
ECN 5321-PA

WIRING DIAGRAM FOR HIGHBOY FURNACE

- NOTES: 1. REPLACEMENT WIRE MUST BE TYPE 105°C OR EQUIVALENT.
2. CONNECT HOT TO 1 AND COMMON TO 2.
3. SET HEAT ANTICIPATOR AT .2 AMPS



THV1M119A9T5SA CTM Wiring Diagram

