

CH Series Check Valves



Check Valves

CH Series Check Valves for Instrumentation

Tylok Check Valves are poppet-style valves made of 316 Stainless Steel, and feature a compact design that is perfect for instrumentation systems. These directional valves are normally closed, but open when the differential pressure between the inlet and outlet exceed the spring pressures.

Features:

- 6000 psig (413 bar) maximum pressure rating
- -10°F (-23°C) to 400°F (204°C) temperature rating
- 1/3 to 10 psig cracking pressure
- Fluorocarbon FKM Seals
- End Connections - Integral Tube Fittings (both twin [CBC-Lok®] & Single [CS-Lok®] ferrule designs)
- Available in sizes 1/4", 3/8", 1/2", 3/4" and 1"



Pressure - Temperature Ratings (based on fluorocarbon FKM seals)

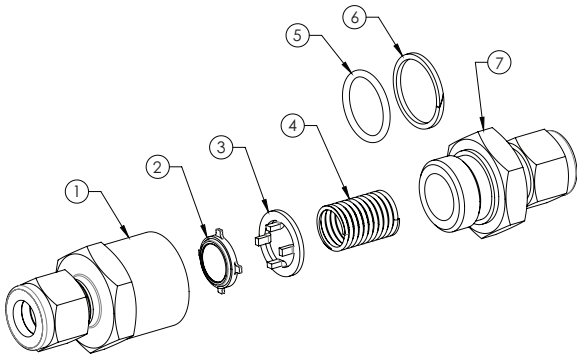
Temperature °F (°C)	Working Pressure psig (bar)
-10°F (-23°C) to 100°F (37°C)	6000 psig (413 bar)
200°F (93°C)	5160 psig (355 bar)
250°F (121°C)	4910 psig (338 bar)
300°F (148°C)	4660 psig (321 bar)
375°F (190°C)	4280 psig (295 bar)

Check Valves

Cracking and Reseal Pressures

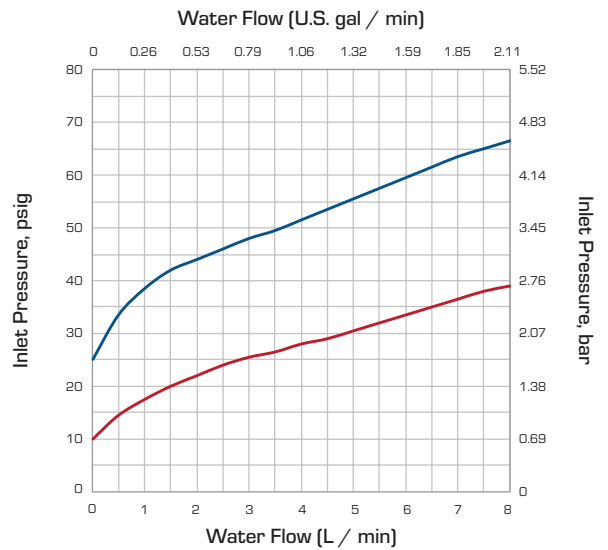
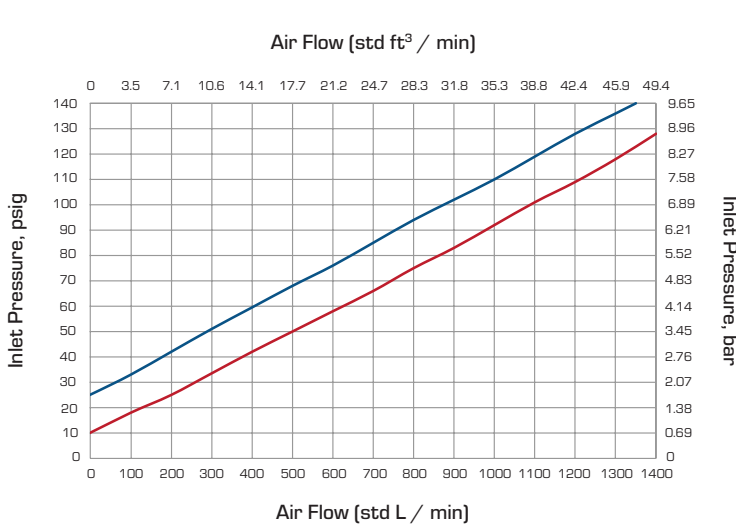
Nominal Cracking Pressure psig (bar)	Cracking Pressure Range psig (bar)	Reseal Pressure Range psig (bar)
1/3 psig (0.02 bar)	1/3 to 3 psig (0.02 to 0.20 bar)	Up to 6 psig (0.41 bar) differential pressure
1 psig (0.06 bar)	1 to 4 psig (0.06 to 0.27 bar)	Up to 6 psig (0.41 bar) differential pressure
5 psig (0.34 bar)	3 to 9 psig (0.20 to 0.62 bar)	Up to 2 psig (0.14 bar) differential pressure
10 psig (0.68 bar)	7 to 15 psig (0.48 to 1.00 bar)	Up to 3 psig (0.20 bar) differential pressure
25 psig (1.07 bar)	20 to 30 psig (1.04 to 2.01 bar)	Up to 17 psig (1.02 bar) differential pressure

CH Series Check Valves

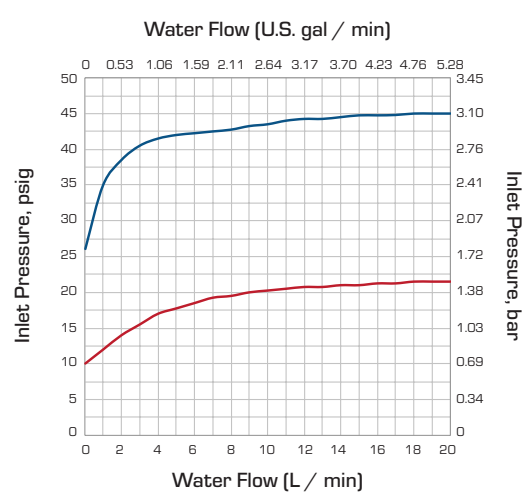
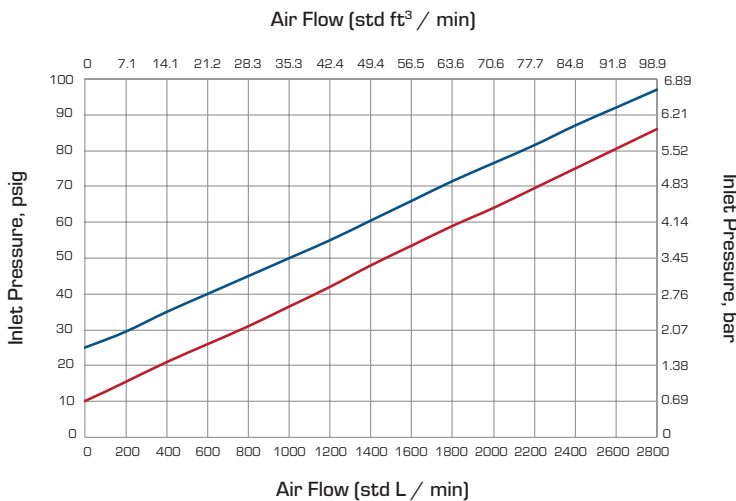


Component	Material	
	(Material Grade/ASTM Specification)	
1	Inlet Body	316SS / A479
2	Bonded Poppet	Fluorocarbon FKM - Bonded 316SS / A479
3	Poppet Stop	316SS / A240
4	Spring	302SS / A313
5	O-Ring	Fluorocarbon FKM
6	Backup Ring	PTFE / D1710
7	Outlet Body	316SS / A479

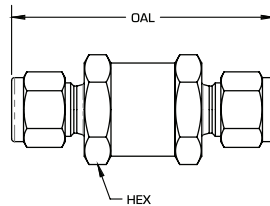
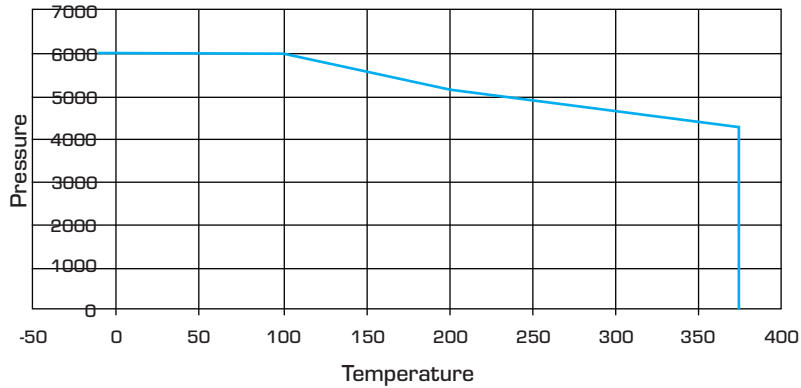
— $C_v = 0.67$ Cracking = 1 psig — $C_v = 0.67$ Cracking = 10 psig



— $C_v = 1.8$ Cracking = 1 psig — $C_v = 1.8$ Cracking = 10 psig



Temperature - Pressure Ratings



Check Valves

End Connection		Part Number	Interchanges With	Pressure Rating At 100°F (37°C) psig (bar)	Cv	OAL	HEX
Type	Size						
CBC-Lok® Tube Fitting	1/8	SS-CH-D2D2-	SS-CHS2-	6000 (414)	0.67	2.27	11/16
	1/4	SS-CH-D4D4-	SS-CHS4-			2.43	
	3/8	SS-CH-D6D6-	SS-CHS6-		1.80	2.75	1
	1/2	SS-CH-D8D8-	SS-CHS8-			2.96	
	3/4	SS-CH-D12D12-	SS-CHS12-	5000 (344)	4.70	3.52	1-5/8
	1	SS-CH-D16D16-	SS-CHS16-	4700 (323)		3.88	
CS-Lok® Tube Fitting	1/8	SS-CH-S2S2-	-	6000 (414)	0.67	2.27	11/16
	1/4	SS-CH-S4S4-	-			2.43	
	3/8	SS-CH-S6S6-	-		1.80	2.75	1
	1/2	SS-CH-S8S8-	-			2.96	
	3/4	SS-CH-S12S12-	-	5000 (344)	4.70	3.52	1-5/8
	1	SS-CH-S16S16-	-	4700 (323)		3.88	
Female NPT to Female NPT	1/4	SS-CH-F4F4-	SS-CHF4-	6000 (414)	0.67	2.13	11/16
	3/8	SS-CH-F6F6-	SS-CHF6-	5000 (344)			
	1/2	SS-CH-F8F8-	SS-CHF8-	4600 (316)	3.03	1	
	3/4	SS-CH-F12F12-	SS-CHF12-	4300 (296)	4.70		3.23
	1	SS-CH-F16F16-	SS-CHF16-	4100 (282)		3.83	
Male NPT to Male NPT	1/4	SS-CH-M4M4-	SS-CHM4-	6000 (414)	0.67	2.17	11/16
	3/8	SS-CH-M6M6-	SS-CHM6-				
	1/2	SS-CH-M8M8-	SS-CHM8-		2.73	1	
	3/4	SS-CH-M12M12-	SS-CHM12-	5000 (344)	4.70		3.29
	1	SS-CH-M16M16-	SS-CHM16-			3.67	