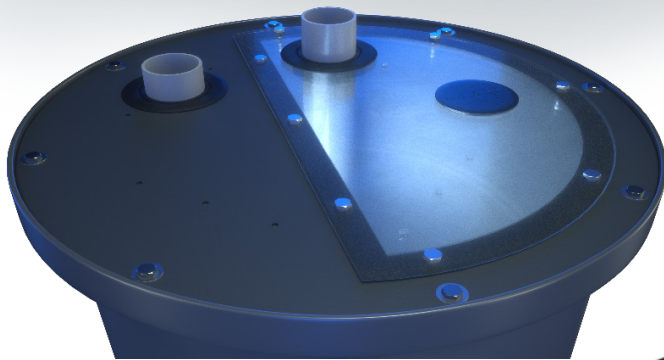
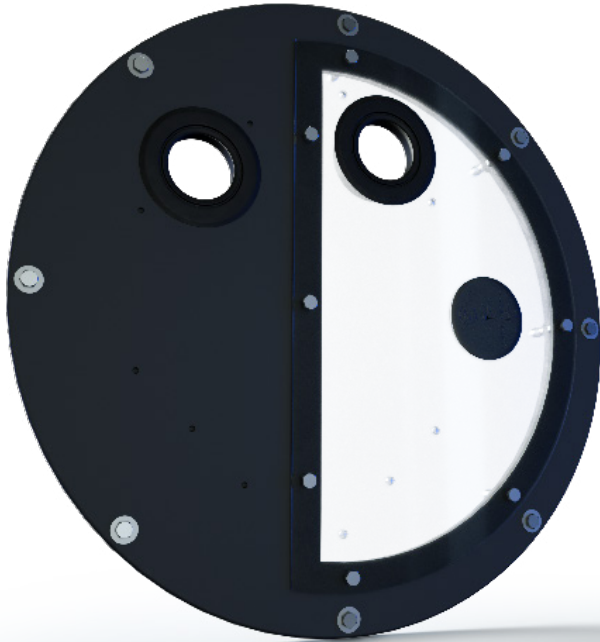




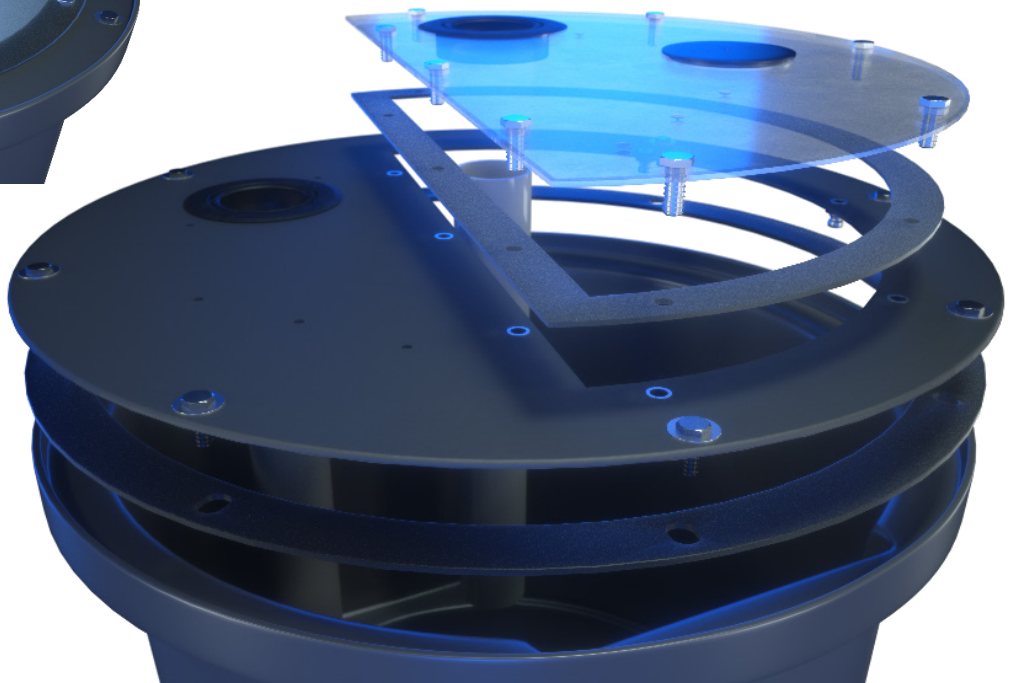
SF 18 TWO-PIECE CLEAR COVER

Now introducing our latest product innovation, the redesigned AK two-piece sump and sewage basin cover. The innovative clear access plate design will make inspection and service to sump and sewage basins easier due to the brass inserts, removable cover design, and clear access plate. Never worry about stripping screws in the cover again. Quick and easy access means saving time, money, and no need for replacement parts.



Once installed, the 8 stainless steel bolts that mount the cover to the basin will never have to be removed again.

Only remove the bolts from the clear access plate in order to service the sump basin or remove the sump pump.



MATERIAL	Hexene Copolymer of Linear Low Density Polyethylene
WEIGHT	4 lbs
WALL THICKNESS	0.25
WARRANTY	One year
COVER SPECS	
<ul style="list-style-type: none">• Part Numbers: AKP80308 to AKP80350• Discharge Sizes: 1.5", 2", & 3"• Vent Sizes: 1.5", 2", & 3"• Bolt Down Flanges: 1.5", 2", 3", & Gas Tight	
DETAILS	
<ul style="list-style-type: none">• Heavy duty structural foam construction with clear access plate cover• Stainless steel hardware and (8) brass inserts for removing access plate• Heavy duty PVC gaskets for a radon tight design• Easy access to the pump without cutting the vent pipe• Works with all AK Industries 18" sump basins• Available with 1 -1/4" – 2" discharge and vent fittings• Works with all models of submersible sump pumps• Pedestrian traffic rated	