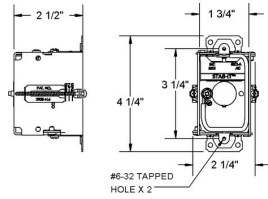




3 IN. X 2 IN. SWITCH BOXES - 2 TO 3-1/2 IN. DEEP WITH ARMORED CABLE / METAL CLAD / FLEX CLAMPS

2-1/2 in. Deep Switch Boxes - Gangable with STAB-IT Connector
Plaster Ears, Old Work, GRIPTITE, 8" #12 Solid Copper Pigtail

A49.1



Catalog #: 523S

APPLICATIONS

RACO® STAB-IT boxes are great for any job where flexible armored cable is being used
RACO® Switch boxes are used to house wiring devices such as switches and outlets

PRODUCT FEATURES

Designed for quick installation of flex, MC, MCI, MCI-A, AC, and HCF Cable
Gangable switch boxes offer the option of constructing a box to hold two or more devices

UL LISTED

File E 195978

CULUS

N/A

COMPLIANCES

s are acceptable for use in 2-hour fire rated walls. For additional information, consult UL "Fire Resistance Directory" or the UL website at www.ul.com

FIRE RESISTANCE

Acceptable for use in 2-hour rated walls

GENERAL PRODUCT INFORMATION

Wiring System: Armored Cable/Metal Clad/MCI-A/Flex
Color: Gray
Country of Origin: Mexico

CONFIGURATION

Cable Priouts: 2
Drawn or Welded: Welded
Raised Ground: No
Gangs: 1
Bottom Knockouts(s): (1) 1/2"

PRODUCT MEASUREMENTS

Depth: 2-1/2 in.
Cubic Inches (cm3): 12.5 (204.8)
Product Length (in.): 2.500
Product Width (in.): 2.625
Product Height (in.): 4.219

PACKAGING

Package Type: Boxed
Minimum Pack Qty.: 25
Std. Pkg.: 25
Ship Carton Qty.: 25
Product UPC-A Labeled: No
Ship Carton Length (in.): 11.250
Ship Carton Width (in.): 8.500
Ship Carton Height (in.): 8.500
Pallet Qty: 2500
UPC Number: 050169500514
I2of5: 50050169500519