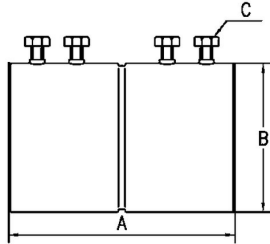




EMT SET SCREW COUPLINGS

Set Screw Couplings, Steel

B04



Catalog #: 2023

APPLICATIONS

For use in dry locations to couple two ends of EMT conduit. RACO set screw couplings provide concrete-tight connections when taped. RACO set screw couplings are suitable for applications above 600V.

PRODUCT FEATURES

- All steel construction ensures mechanical protection for the raceway
- Tri-head screws (1/2 in. to 2 in. trade sizes) may be installed using a slotted, Phillips, or Robertson head screwdriver
- 2-1/2 in. to 4 in. trade sizes are also UL listed for use on Rigid/IMC conduit, allowing for design and installation flexibility
- All components are zinc electroplated for corrosion protection
- UPC bar coded fittings are individually polybagged with a preprinted UPC-A bar code, and packaged in pre-scored tear top cartons for an attractive presentation

UL LISTED

2-1/2" - 4" Standard 514B, File E195969, E195970

CULUS

1/2" - 2" Standard 514B, C22.2 # 18

COMPLIANCES

MSDS
www.hubbell-rtb.com/certifications/Hubbell-RACO_MSDS_for_WP_Boxes_and_Fittings_January_2015.pdf

GENERAL PRODUCT INFORMATION

Trade Size: 3/4 in.

DRAWING DIMENSIONS

Dimension A: 1.92 in.
 Dimension B: 1.08 in.
 Thread Spec. C: #12-28UNF

PACKAGING

Package Type: Carton
 Std. Pkg.: 25
 Ship Carton Qty.: 250
 Product UPC-A Labeled: No
 Weight (Lbs. Per/C): 14.20
 Ship Carton Length (in.): 20.92
 Ship Carton Width (in.): 9.74
 Ship Carton Height (in.): 8.06
 Pallet Qty: 10000
 UPC Number: 050169020234