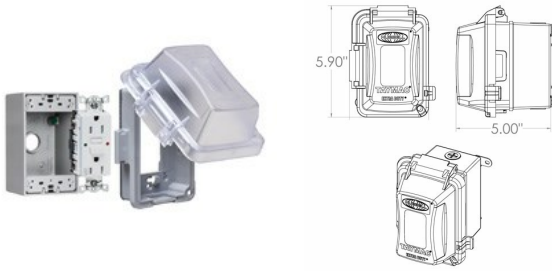




NON-METALLIC - IN-USE COVERS

**Complete While-In-Use Cover Kits- Extra Duty®
Hubbell WRTR 15 AMP Self Test GFCI / Standard While-In-Use Cover / Box**

C08.1



Catalog #: MKG420CS

APPLICATIONS

Designed for used whenever weatherproof protection is required while a receptacle is in use.

PRODUCT FEATURES

- High quality Hubbell WRTR device included
- Patented Quick-Fit™ keyhole mounting system allows installation in under a minute.
- Includes attached gasket and mounting hardware
- Combo includes receptacle and cover / Kit includes box, receptacle and cover
- Lockable tab

UL LISTED

File E313240

CULUS

N/A

NEMA

3R Rated

NEC

2014 Compliant (article 406.9A & B) Extra Duty Rated

US PATENTS

6,420,654; 6,420,653

GENERAL PRODUCT INFORMATION

Color: Clear
 Country of Origin: USA

CONFIGURATION

Gangs: 1

PRODUCT MEASUREMENTS

Depth: 2-3/4 in.
 Wt. Ea. (Lbs.): 1.520

PACKAGING

Package Type: Shrink
 Std. Pkg.: 4
 Product UPC-A Labeled: Yes
 Weight (Lbs. Per/C): 151.50
 Ship Carton Length (in.): 13.70
 Ship Carton Width (in.): 6.00
 Ship Carton Height (in.): 9.40
 Ctn Weight (Lbs.): 6.06
 Pallet Qty: 400.00
 UPC Number: 050169504413
 I2of5: 50050169504418