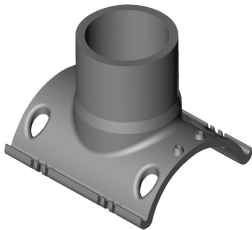


ELECTROFUSION BRANCH SADDLE
PE3408/PE4710, Underpart Clamp
Outlet Size: 6" IPS

- Outlet Wall: DR11
- Pin Type: 4.7S (4.7 Solid Pin)
- Approval: ASTM D2513
- Approval: ASTM F1055
- Approval: ASTM D3261
- Approval: AWWA C906
- Approval: NSF-61

Please call for more information on availability, pricing, other sizes and dimensions.

Main Size (inch)	GFCP Part No.	GF weight Part No.	(lb)	A (inch)	D (inch)	H (inch)	W (inch)	L (inch)	Box Qty
8 IPS	10003795	360 021 167	5.401						1
8 IPS	10006455	360 000 788	16.799						1
10 IPS	10006438	360 021 147	7.893						1
10 IPS	10006459	360 000 745	27.646						1
12 IPS	10006440	360 021 153	9.612						1
12 IPS	10006465	360 000 753	27.999						1

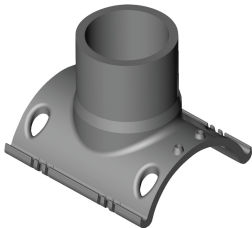


ELECTROFUSION BRANCH SADDLES
PE3408/PE4710
Outlet Size: 6" IPS

- Outlet Wall: DR17
- Pin Type: 4.7S (4.7 Solid Pin)

Please call for more information on availability, pricing, other sizes and dimensions. The products listed are standard stocking options. However, GF Central Plastics offers thousands of different configurations as well as custom innovative structures.

Main Size (inch)	GFCP Part No.	GF weight Part No.	(lb)	Box Qty
8 IPS	5758407	360 000 789	6.614	1
10 IPS	10009202	360 000 744	6.989	1
12 IPS	10009203	360 000 754	6.371	1



ELECTROFUSION BRANCH SADDLES
PE3408/PE4710, Underpart Clamp
Outlet Size: 6" DIPS

- Outlet Wall: DR11
- Pin Type: 4.7S (4.7 Solid Pin)
- Approval: ASTM D2513
- Approval: ASTM F1055
- Approval: AWWA C906
- Approval: NSF-61

Please call for more information on availability, pricing, other sizes and dimensions.

Main Size (inch)	GFCP Part No.	GF weight Part No.	(lb)	A (inch)	D (inch)	H (inch)	W (inch)	L (inch)	Box Qty
8 DIPS	10006442	360 021 164	6.570						1
8 DIPS	10006471	360 000 783	19.004						1
10 DIPS	10006446	360 021 145	8.245						1
10 DIPS	10006475	360 000 740	22.355						1
12 DIPS	10006450	360 021 151	10.296						1