

SUBMITTAL DATA: PLA-A18EA7 & PUY-A18NKA7
18,000 BTU/H CEILING CASSETTE AIR-CONDITIONING SYSTEM

| | |
|---------------------|---|
| Job Name: | Engineer: |
| Purchaser: | Application: Std. Cooling Ultra Low Ambient Cooling |
| Submitted To: | For: <input type="checkbox"/> Reference <input type="checkbox"/> Approval <input type="checkbox"/> Construction |
| Submitted By: | Location: |
| System Designation: | Schedule No.: |



Indoor Unit: PLA-A18EA7



Outdoor Unit: PUY-A18NKA7 (-BS)

UNIT OPTION:

Standard Model.....PUY-A18NKA7
Seacoast (BS) Model.....PUY-A18NKA7-BS

ACCESSORIES:

Indoor Unit

Multifunction Casement / High Efficiency Filter (PAC-SJ41TM-E / PAC-SH59KF-E)
Grille with 3D i-see Sensor™ (PLP-41EAEU) - (Required ordered separately)

Optional Controls

Wireless Controller (MHK1)
Advanced Wired Controller (PAR-40MAA)
Simple Wired Controller (PAC-YT53CRA)
Thermostat Interface (PAC-US444CN)
Wireless Remote Controller (PAR-FL32MA)(Requires Signal Receiver (PAR-SR4LU-E))
M-NET Adapter (PAC-SJ96MA-E)

Outdoor Unit

Front Wind Guard (PFR-12-18)
Rear Wind Guard (PRE-12-18)
Side Wind Guard (PSD-12-18)

Note: Mitsubishi Electric (MESCA) supports the use of only MESCA supplied and approved Snow Guard / Wind Deflectors / Windscreens and accessories for proper functioning of the unit(s). Use of non-MESCA supported Snow Guard / Wind Deflectors / Windscreens and accessories will affect warranty coverage.

SPECIFICATIONS:

| Rated Conditions (Capacity / Input)* | | |
|--------------------------------------|-----------|----------------|
| Cooling | Btu/h / W | 18,000 / 1,250 |

* Rating Conditions per AHRI Standard:
Cooling | Indoor: 80°F (27°C) DB / 67°F (19°C) WB
Cooling | Outdoor: 95°F (35°C) DB / 75°F (24°C) WB

| Capacity Range | | |
|----------------|-------|----------------|
| Cooling | Btu/h | 8,000 - 18,000 |

| Operating Range | | |
|-----------------|--|-------------------------------------|
| Cooling | | -40F** (-40.0°C) to 115°F (46°C) DB |

** Windscreens required for cooling operation below 23°F (-5°C)

| AHRI Efficiency Rating | |
|------------------------|------|
| EER | 14.4 |
| SEER | 24.6 |

| Electrical Power Requirements | |
|-------------------------------|----------------------------|
| | 208 / 230V, 1-Phase, 60 Hz |

| Minimum Circuit Ampacity (MCA) * | | Breaker Size | MOCP (Outdoor) |
|----------------------------------|----------------|--------------|----------------|
| Indoor 1 AMP | Outdoor 11 AMP | 15 AMP | 28 AMP |

***All electrical work shall comply with National (CEC) and local codes and regulations.**

| Indoor Unit | | |
|---------------------------------|---------|------------------|
| Fan Motor (ECM) | F.L.A. | 0.36 |
| Fan Motor Output | W | 50 |
| SHF / Moisture Removal | | 0.85 / 2.4 pt./h |
| Drain Lift Mechanism (Included) | H: In. | 33-7/16 |
| Field Drainpipe Size O.D. | In.(mm) | 1-1/4 (32) |

| Outdoor Unit | | |
|-----------------|--------|--------------------------------|
| Compressor | | DC INVERTER-driven Twin Rotary |
| Fan Motor (ECM) | F.L.A. | 0.5 |
| Fan Motor Power | W | 46 |

| Airflow Rate (Low-M1-M2-Hi) | | | |
|-----------------------------|-----|-----|-----------------|
| Indoor (Cooling) | DRY | CFM | 420-460-570-600 |
| | WET | | 380-420-530-560 |
| Outdoor | DRY | | 1,590 |

| Sound Pressure Level | | |
|-----------------------|-------|-------------|
| Indoor (Low-M1-M2-Hi) | dB(A) | 28-29-31-32 |
| Outdoor Cooling | | 44 |

| External Dimensions | | | |
|--|----------|--|--|
| Indoor (H x W x D) Grille (H x W x D) | In. (mm) | 10-3/16 [1-9/16] x 33-3/32 [37-13/32] x 33-3/32 [37-13/32] (258 [40] x 840 [950] x 840 [950]) | |
| Outdoor (H x W x D) | | 24-13/16 x 31-13/16 + 7/16 x 11-3/16 (630 x 809 + 62 x 300) | |

| Net Weight | | |
|------------------------|----------|------------------|
| Indoor (Unit / Grille) | Lbs.(kg) | 46 / 11 (21 / 5) |
| Outdoor | | 99 (44) |

| External Finish | |
|-----------------|--------------------------------|
| Indoor | Munsell 1.0Y 9.2/0.2 |
| Outdoor | Ivory Munsell No. 3Y 7.8 / 1.1 |

| | |
|-------------|------------------------------|
| Refrigerant | R410A ; 4lbs., 14oz. (2.2kg) |
|-------------|------------------------------|

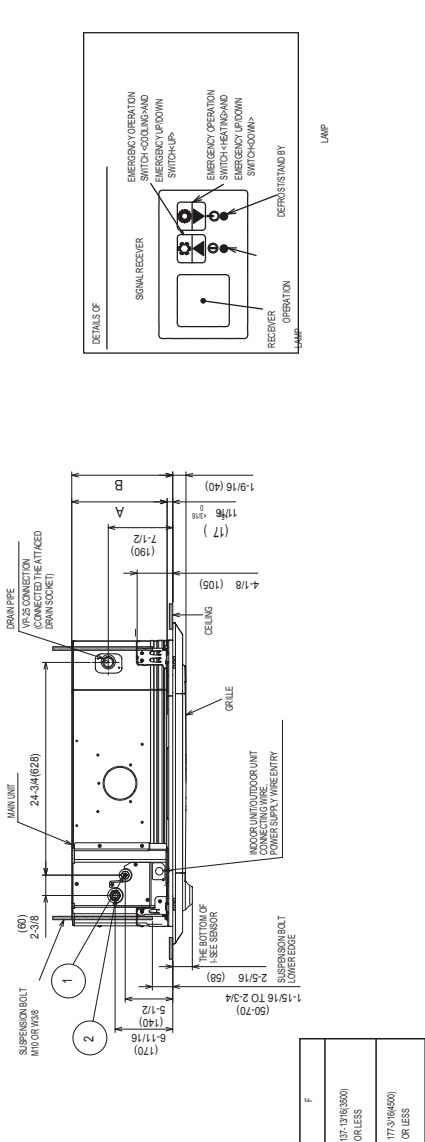
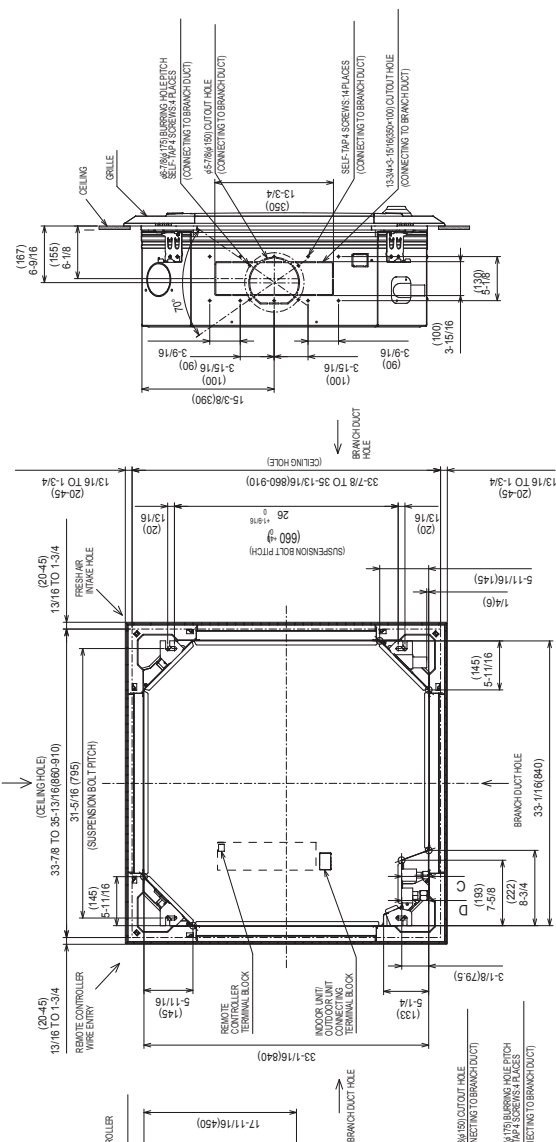
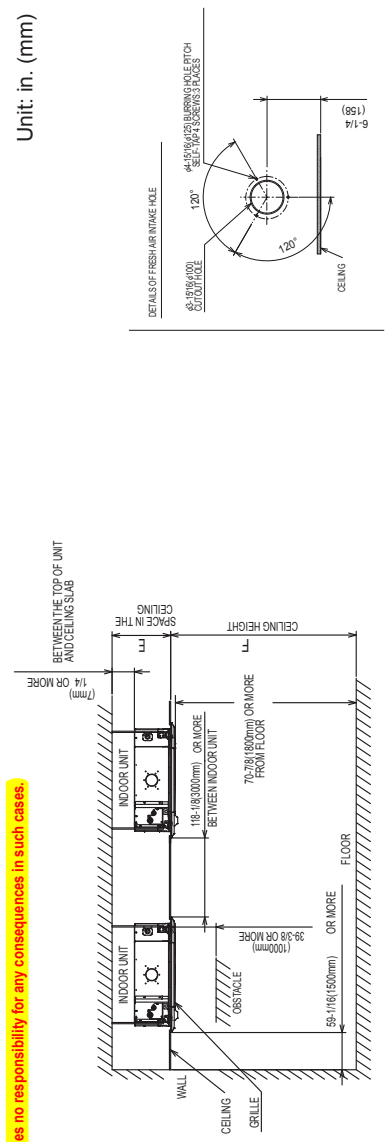
| Refrigerant Piping (Flared) | | |
|---------------------------------------|---------|------------|
| Liquid (High Pressure) | In.(mm) | 1/4 (6.35) |
| Gas (Low Pressure) | | 1/2 (12.7) |
| Maximum Total Refrigerant Pipe Length | Fl. (m) | 165 (50) |
| Maximum Vertical Separation | Fl. (m) | 100 (30) |

Specifications are subject to change without notice.

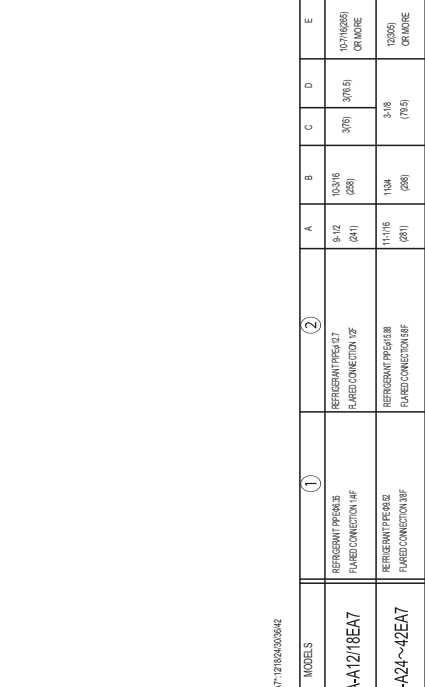
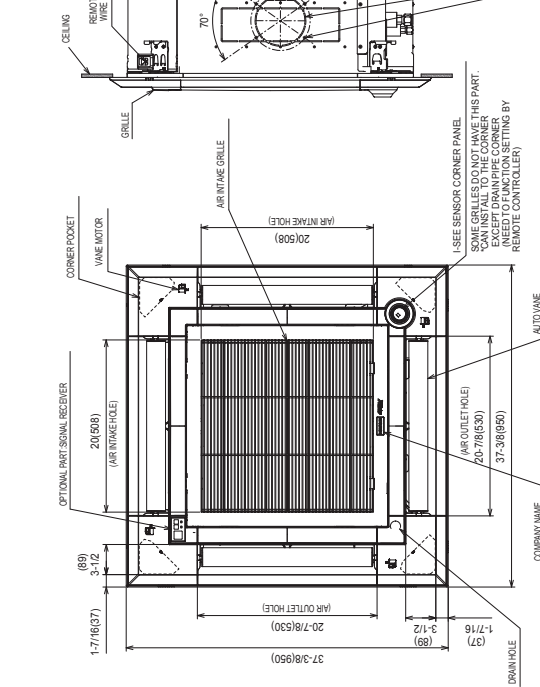
Should this document be altered or changed without MESCA's permission, it becomes null and void. MESCA assumes no responsibility for any consequences in such cases.

DIMENSIONS: PLA-A18EA7

Unit: in. (mm)



1. CHOOSE THE GRILLE AMONG THE DEDICATED GRILLES.
 2. REINFORCE THE SUSPENSION BOLT FOR EARTHQUAKE RESISTANCE AS NEEDED.
 3. FOR THE SUSPENSION BOLT, USE M10 OR W3/8. (PROCURED AT THE LOCAL SITE.)
 4. FOR DRAIN PIPE, USE VP-25(O.D. 1-1/4" (32) PVC TUBE). DRAIN PUMP INCLUSION. RAISE IS MAX 33-7/16" (850mm) FROM THE CEILING.
 5. ELECTRICAL BOX MAY BE REMOVED FOR THE SERVICE PURPOSE.
- MAKE SURE TO SLACK THE ELECTRICAL WIRE LITTLE BIT FOR CONTROL/POWER WIRES CONNECTION.
6. THE HEIGHT OF THE INDOOR UNIT IS ABLE TO BE ADJUSTED WITH THE GRILLE ATTACHED.
 7. REQUIRES "E" OR MORE SPACE BETWEEN TRANSOM AND CEILING FOR THE INSTALLATION.
 8. WHEN INSTALLING THE BRANCH DUCTS, BE SURE TO INSULATE ADEQUATELY.
 9. OTHERWISE CONDENSATION AND DRIPPING MAY OCCUR (IT BECOMES THE CAUSE OF DROPLET OR DRIPLETT DRIPPING).
 10. FOR NECESSARY INSTALLATION SERVICE SPACE, PLEASE REFER TO THE RIGHT AT FIGURE.
 11. FOR THE INSTALLATION OF THE OPTIONAL HIGH EFFICIENCY FILTER OR MULTI-FUNCTIONAL CASEMENT, REFER TO SPECIAL DRAWING.

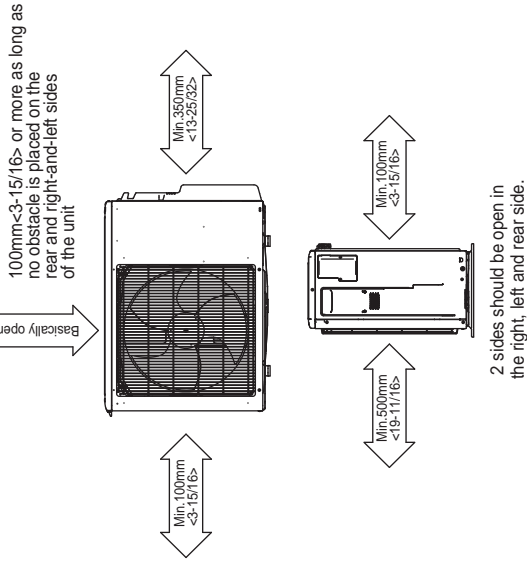


Specifications are subject to change without notice.

DIMENSIONS: PUY-A18NKA7

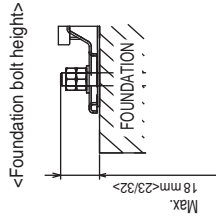
Unit: mm (in.)

Free space around the outdoor unit (basic example)



FOUNDATION BOLTS

Please secure the unit firmly with 4 foundation (M10- $\langle W3/8 \rangle$) bolts. (Bolts, washers and nut must be purchased locally).



2-U Shaped notched holes
(Foundation Bolt M10- $\langle W3/8 \rangle$)

