

# 1 System Data Sheet

## MegaPress 304 FKM



MegaPress 304 FKM fittings are designed to be used with standard IPS ASTM A312 stainless steel pipe to form a complete press system that is ideal for industrial applications. MegaPress 304 FKM ½" to 2" fittings can be used with Schedule 5 to Schedule 40 stainless steel pipe and

2½" to 4" fittings can be used with Schedule 10 to Schedule 40 stainless steel pipe. A MegaPress 304 FKM system can stand up to harsh environments while transporting process water, diesel fuel, lube oil, ammonia, low pressure steam, or any number of other essential fluids or gases. MegaPress 304 FKM fittings in sizes from ½" to 4" are offered in configurations including: elbows, couplings, reducers, tees, reducing tees, threaded adapters, unions, caps, and flanges.

### Components

- Alloy: 304 stainless steel
- FKM sealing element
- 420 stainless steel grip ring
- 304 stainless steel separator ring for ½" to 2" fittings
- PBT separator ring for 2½" to 4" fittings

### Operating Parameters

- Operating Pressure: 200 psi max
- Operating Temperatures: 14°F to 284°F (with temperature spikes up to 356°F)

### Listings and Certificates

- |                            |                         |
|----------------------------|-------------------------|
| ■ ABS type approval        | ■ NFPA 13, 13D, 13R     |
| ■ ASME B31.1, B31.3, B31.9 | The following apply to  |
| ■ BV (Bureau Veritas)      | ½" to 2" fittings only: |
| ■ CRN 13492.5 A/B/C        | ■ FM Class 1920         |
| ■ DNV-GL                   | ■ UL/ANSI 213           |
| ■ IAPMO PS117              | ■ ULC/ANSI ORD-C213-ES  |
| ■ ICC-ES LC1002            |                         |
| ■ Lloyd's Register         |                         |

### Compliant With

- ASME B31
- ASTM A312
- ASTM A554
- IAPMO Uniform Mechanical Code (UMC)
- ICC International Mechanical Code (IMC)
- ICC International Residential Code (IRC)
- National Building Code of Canada (NBCC)
- National Plumbing Code of Canada (NPCC)

### Approved Applications

- |                         |                               |
|-------------------------|-------------------------------|
| ■ Low pressure steam    | ■ Acid solutions              |
| ■ Industrial gases      | ■ Vacuum                      |
| ■ Compress air (no oil) | ■ Process water (non-potable) |
| ■ Lube oil              |                               |
| ■ Caustic solutions     |                               |

For more specific information on applications for MegaPress 304 FKM, contact Viega Technical Services at 1-800-976-9819.

MegaPress 304 FKM systems are approved for underground use. When installed underground, MegaPress 304 FKM should have proper corrosion protection in accordance with local and national codes.

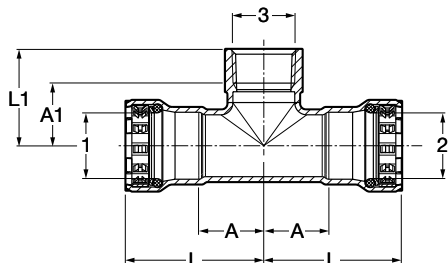
### Recommended Tools

- Standard size press tool (minimum hydraulic ram output of 7200 lbs.)
- #56013 MegaPress jaw/ring kit (½" to 2")
- #26200 MegaPress XL PressBooster with 2½" press ring
- #26201 MegaPress XL 3" and 4" press ring kit

### Smart Connect® Technology

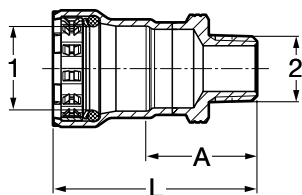
MegaPress 304 FKM fittings are manufactured with Viega's unique Smart Connect technology. Designed into the fitting itself, Smart Connect technology allows identification of an unpressed fitting during pressure testing.

**MegaPress Reducing Tee, Stainless Steel, P x P x FPT - Models 4117.2 / 5117.2 / 6817.2**



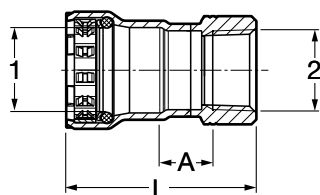
| Part No. |          |         | Size (in) |       |     | A (in) | A1 (in) | L (in) | L1 (in) |
|----------|----------|---------|-----------|-------|-----|--------|---------|--------|---------|
| 304 FKM  | 316 EPDM | 316 FKM | 1         | 2     | 3   |        |         |        |         |
| 95180    | 90180    | 91845   | 3/4       | 3/4   | 1/2 | 1.09   | 1.01    | 2.29   | 1.54    |
| 95185    | 90185    | 91850   | 3/4       | 3/4   | 3/4 | 1.09   | 1.02    | 2.29   | 1.58    |
| 95190    | 90190    | 91855   | 1         | 1     | 1/2 | 1.24   | 1.17    | 2.63   | 1.70    |
| 95195    | 90195    | 91860   | 1         | 1     | 3/4 | 1.24   | 1.17    | 2.63   | 1.73    |
| NA       | NA       | 91865   | 1 1/4     | 1 1/4 | 1/2 | 1.41   | 1.33    | 3.27   | 1.87    |
| NA       | NA       | 91870   | 1 1/4     | 1 1/4 | 3/4 | 1.41   | 1.33    | 3.27   | 1.89    |
| NA       | NA       | 91875   | 1 1/4     | 1 1/4 | 1   | 1.41   | 1.48    | 3.27   | 2.14    |
| 95200    | 90200    | 91880   | 1 1/2     | 1 1/2 | 1/2 | 1.57   | 1.40    | 3.48   | 1.94    |
| 95205    | 90205    | 91885   | 1 1/2     | 1 1/2 | 3/4 | 1.57   | 1.41    | 3.48   | 1.96    |
| 95210    | 90210    | 91890   | 1 1/2     | 1 1/2 | 1   | 1.57   | 1.55    | 3.48   | 2.21    |
| 95215    | 90215    | 91895   | 2         | 2     | 1/2 | 1.81   | 1.72    | 3.82   | 2.26    |
| 95220    | 90220    | 91900   | 2         | 2     | 3/4 | 1.81   | 1.70    | 3.82   | 2.26    |
| 95225    | 90225    | 91905   | 2         | 2     | 1   | 1.81   | 1.89    | 3.82   | 2.55    |

**MegaPress Adapter, Stainless Steel, P x MPT - Models 4111 / 5111 / 6811**



| Part No. |          |         | Size (in) |       | A (in) | L (in) |
|----------|----------|---------|-----------|-------|--------|--------|
| 304 FKM  | 316 EPDM | 316 FKM | 1         | 2     |        |        |
| 95230    | 90230    | 91205   | 1/2       | 1/2   | 1.42   | 2.53   |
| 95235    | 90235    | 91210   | 3/4       | 1/2   | 1.43   | 2.63   |
| 95240    | 90240    | 91215   | 3/4       | 3/4   | 1.46   | 2.66   |
| 95245    | 90245    | 91220   | 1         | 1     | 1.63   | 3.02   |
| 95830    | 90880    | 91225   | 1 1/4     | 1 1/4 | 1.85   | 3.70   |
| 95250    | 90250    | 91230   | 1 1/2     | 1 1/2 | 1.92   | 3.73   |
| 95255    | 90255    | 91235   | 2         | 2     | 1.89   | 3.90   |

**MegaPress Adapter, Stainless Steel, P x FPT - Models 4112 / 5112 / 6812**



| Part No. |          |         | Size (in) |       | A (in) | L (in) |
|----------|----------|---------|-----------|-------|--------|--------|
| 304 FKM  | 316 EPDM | 316 FKM | 1         | 2     |        |        |
| 95260    | 90260    | 91240   | 1/2       | 1/2   | 0.67   | 2.31   |
| 95265    | 90265    | 91245   | 3/4       | 3/4   | 0.68   | 2.43   |
| 95270    | 90270    | 91250   | 1         | 1     | 0.71   | 2.76   |
| 95835    | 90885    | 91255   | 1 1/4     | 1 1/4 | 0.73   | 3.27   |
| 95275    | 90275    | 91260   | 1 1/2     | 1 1/2 | 0.73   | 3.22   |
| 95280    | 90280    | 91265   | 2         | 2     | 0.73   | 3.44   |