

PFGB SERIES

PFGBXXBS4 1-1/4" (OD) POLISHED STAINLESS STEEL GRAB BAR



Product Features

- 1-1/4" SS grab bar w/concealed flange
- Bar-18 gauge (.048) 304 stainless steel
- Flange-14 gauge 304 stainless steel
- Screws-#10 x 2" self tapping stainless steel
- Finish-polished finish on grab bars
- Rated to 250 lb. test load
- Recommended Accessory: WRESGBW35 Winglts Grab Bar Fastener Set of 2



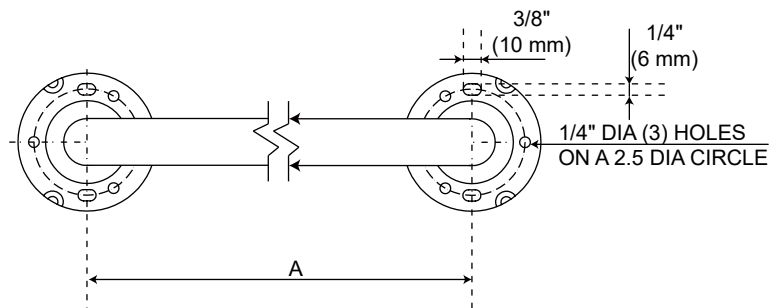
Codes and Certifications



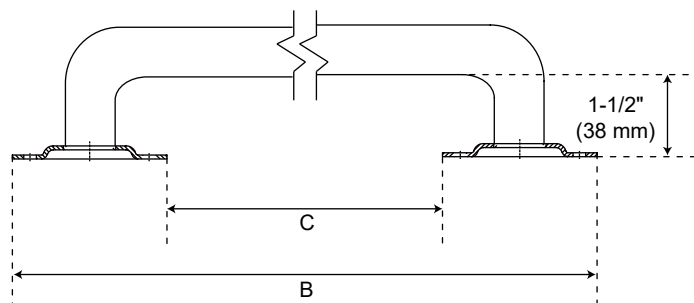
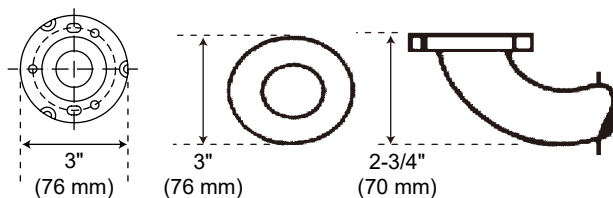
- ADA Compliant

PFGB12BS4

Satin Finish	A	B	C
PFGB12BS4	12"	15"	9"
PFGB18BS4	18"	21"	15"
PFGB24BS4	24"	27"	21"
PFGB30BS4	30"	33"	27"
PFGB36BS4	36"	39"	33"
PFGB42BS4	42"	45"	39"



Note: Stainless steel handle bar MUST BE attached to wall stud.



For detailed warranty information, visit ferguson.com/proflo-faucet-warranty.