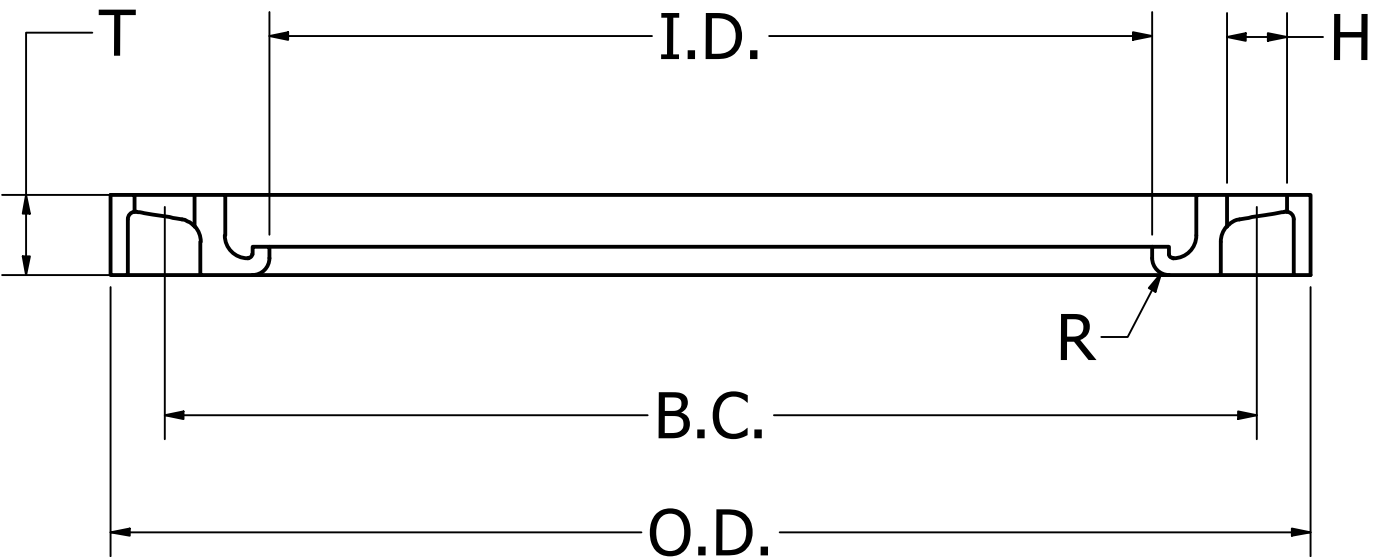
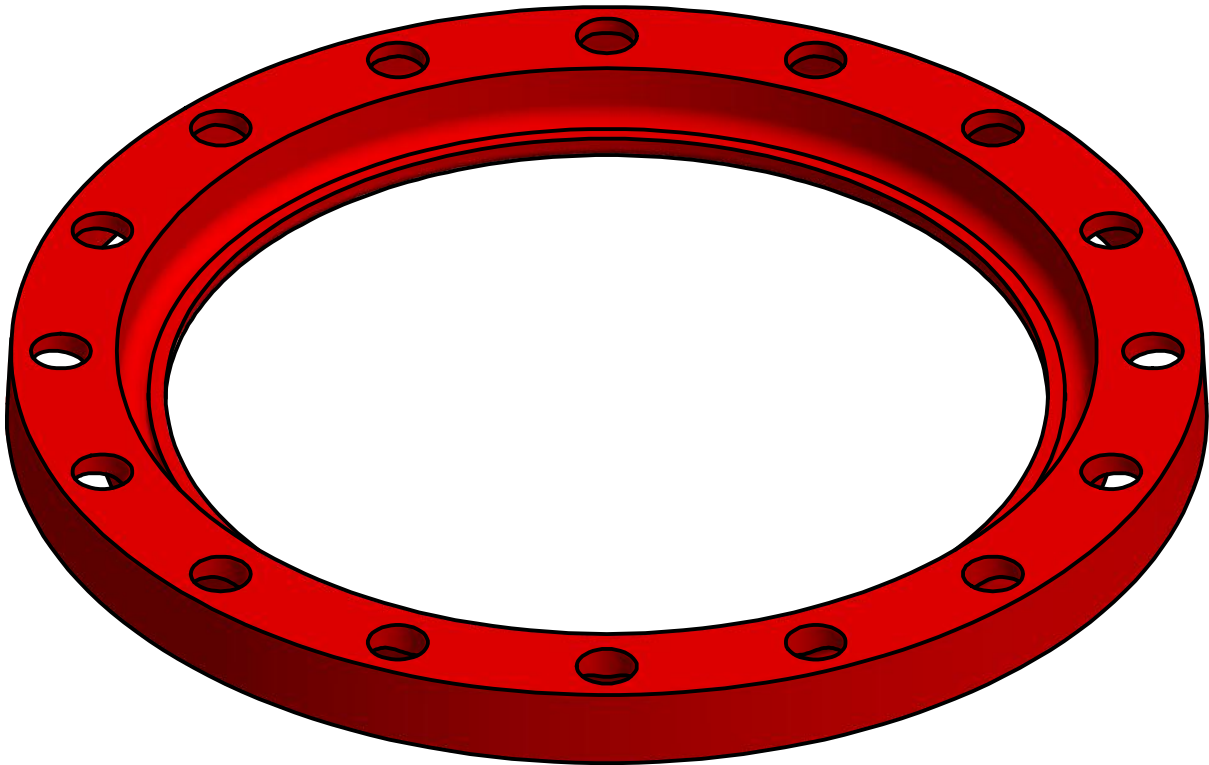


MATERIAL: ASTM A536 65/45/12
COATINGS: RED OXIDE PRIMER, EPOXY OR HOT DIP GALVANIZED

Dimensions											
Pipe Diameter (in)	SDR	O.D.	T	I.D.	Bolt Count	Bolt Hole Size (H)	Bolt Hole Circle (BC)	R	Weight (lbs)	Pressure Class (PC)	FM APPROVED
24"	7	32.000	2.500	24.375	20	1.375	29.500	0.310	103.2	335	FM(250psi)
24"	9	32.000	2.130	24.375	20	1.375	29.500	0.310	91.0	250	FM(250psi)
24"	11	32.000	2.170	24.375	20	1.375	29.500	0.400	73.0	200	FM(200psi)
24"	17	32.000	1.950	24.375	20	1.375	29.500	0.400	58.9	125	N/A
26"	7	34.250	2.530	26.380	24	1.375	31.750	0.310	113.8	335	FM(250psi)
26"	11	34.250	2.380	26.380	24	1.375	31.750	0.310	106.0	200	FM(200psi)
26"	17	34.250	2.000	26.380	24	1.375	31.750	0.250	80.4	125	N/A
28"	9	36.500	2.600	28.380	28	1.375	34.000	0.310	123.6	250	N/A
28"	11	36.500	2.500	28.380	28	1.375	34.000	0.310	116.0	200	FM(200psi)
28"	17	36.500	2.300	28.380	28	1.375	34.000	0.500	103.7	125	N/A
30"	7	39.000	4.250	30.370	28	1.375	36.000	0.310	218.0	335	N/A
30"	9	38.750	2.800	30.380	28	1.375	36.000	0.310	142.0	250	N/A
30"	11	38.750	2.600	30.380	28	1.375	36.000	0.310	123.0	200	FM(200psi)
30"	17	38.750	2.280	30.380	28	1.375	36.000	0.310	112.6	125	N/A
30"	26	38.750	2.060	30.380	28	1.375	36.000	0.250	105.6	80	N/A
32"	9	41.750	3.000	32.380	28	1.630	38.500	0.310	174.3	250	N/A
32"	11	41.750	2.750	32.380	28	1.630	38.500	0.320	156.0	200	FM(200psi)
32"	26	41.750	2.120	32.380	28	1.630	38.500	0.500	138.0	80	N/A
34"	11	43.750	2.930	34.380	32	1.630	40.500	0.310	197.0	200	FM(200psi)
34"	26	43.750	2.140	34.380	32	1.630	40.500	0.310	136.7	80	N/A
34"	17	43.750	2.440	34.380	32	1.630	40.500	0.310	188.0	125	N/A
36"	9	46.000	3.800	36.380	32	1.630	42.750	0.310	323.0	250	N/A
36"	11	46.000	3.030	36.380	32	1.630	42.750	0.310	214.0	200	FM(200psi)
36"	17	46.000	2.750	36.380	32	1.630	42.750	0.310	170.3	125	N/A
36"	26	46.000	2.500	36.380	32	1.630	42.750	0.310	160.5	80	N/A
40"	11	50.750	4.060	40.500	36	1.630	47.250	0.320	480.0	200	N/A
42"	11	53.000	4.060	42.380	36	1.630	49.500	0.310	445.4	200	N/A
42"	13.5	53.000	3.660	42.380	36	1.630	49.500	0.310	430.0	160	N/A
42"	21	53.000	3.000	42.380	36	1.630	49.500	0.310	297.0	100	N/A
42"	39	53.000	2.260	42.380	36	1.630	49.500	0.310	253.0	50	N/A
48"	11	59.500	4.530	48.500	44	1.630	56.000	0.250	620.2	200	N/A
48"	17	59.500	3.940	48.500	44	1.630	56.000	0.250	497.4	125	N/A
48"	26	59.500	3.500	48.500	44	1.630	56.000	0.250	332.5	80	N/A
48"	51	59.500	2.400	48.500	44	1.630	56.000	0.250	234.0	40	N/A
54"	17	66.250	4.000	54.620	44	1.880	62.750	0.190	674.0	125	N/A
54"	19	66.250	4.330	54.620	44	1.880	62.750	0.190	694.0	110	N/A
54"	26	66.250	3.750	54.620	44	1.880	62.750	0.190	453.8	80	N/A
54"	51	66.250	2.570	54.620	44	1.880	62.750	0.190	375.0	40	N/A
63/60"	26	73.000	2.800	64.000	52	1.880	69.250	0.200	349.9	80	N/A
63/60"	17	73.000	3.150	64.000	52	1.880	69.250	0.200	413.0	125	N/A

Ongoing engineering design efforts may affect the technical information listed in our publications.

REVISION HISTORY		
REV	DESCRIPTION	DATE
1	VALID - ORIGINAL DWG	7/29/11
2	ADD 42" SDR11	09/07/11
3	ADD 20", 22", 24 SDR7	10/14/11
4	EDIT SDR COUNN	06/28/12
5	EDIT PER PHYSICAL FLANGE	05/20/13
6	CHANGED SDR26 TO SDR17 AND SDR19 TO SDR26	2/26/2014
7	CHANGED 160psi to 200psi & 267psi to 335psi	4/2/14
8	UPDATE DIMENSIONS	7/11/2014
9	UPDATE FM (200psi TO 250psi AND 160psi TO 200psi)	9/07/2017
10	ADD 30" SDR7	9/03/2020



NOTES

Improved Piping Products' backing ring and blinds mate with AWWA C207, ANSI B16.5 and ANSI B16.47, as appropriate. Specifications not stated in these standards follow internal specifications

PP IMPROVED

PIPING PRODUCTS, INC.

TITLE

BU-SDR DI Convuluted Flange / Backup Ring

Submittal Sheet

UNLESS OTHERWISE NOTED,
ALL DIMENSIONS IN INCHES