

FIGURE 7897 - 7899

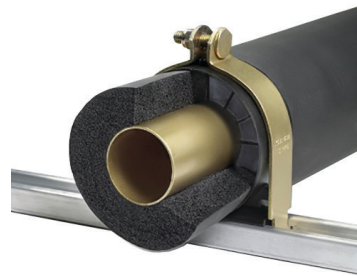
STRUT ACCESSORIES



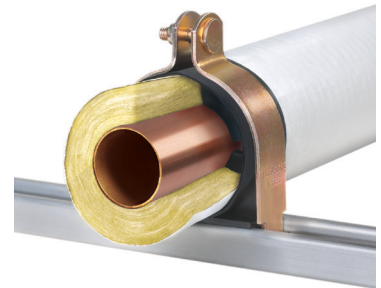
INSULATION COUPLING

FNW Insulation Couplings support and secure the copper tube or iron pipe independent of the insulation.

The insulation is then inserted into the coupling to provide a superior vapor barrier to other methods. The weight of the secured member will not crush or tear the insulation over time.



FNW7897



FNW7899



Use Recommendations

1. Coupling spacing should be no more than 60 inches.
2. Install clamps as close as possible to each side of bend to prevent movement.
3. Overwrap of coupling with insulation is not required.
4. Acceptable for horizontal, vertical and inverted installations.
5. Figure 7897 for use with elastomeric insulation.
6. Figure 7899 for use with fiberglass insulation.

1. Determine correct size of nominal pipe (IPS), copper tube (outside diameter) or metric pipe (outside diameter). Determine insulation wall thickness (elastomeric or fiberglass).

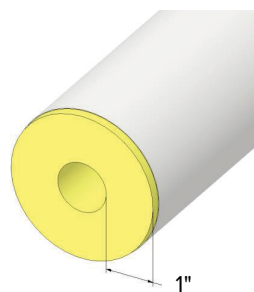
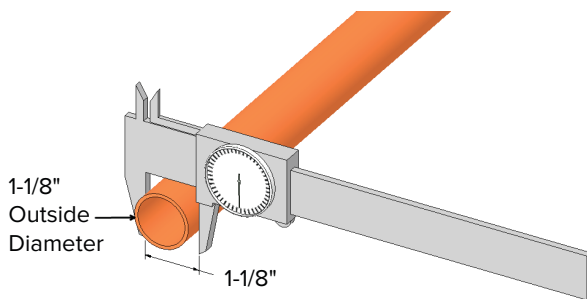


FIGURE 7897 - 7899


STRUT ACCESSORIES



INSULATION COUPLING

- 2. Slide plastic coupling down pipe or slice open with razor knife in grooved slot on top of part, and place around tube/pipe. Place on channel (any industry standard 1-5/8" wide).



 **WARNING:**
Blades can cause serious injury. Use caution when using a knife.

- 3. Place metal clamps in strut around coupling.

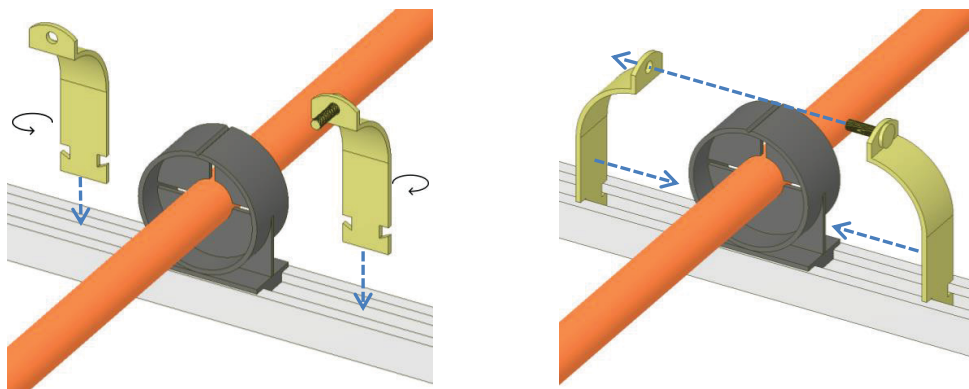


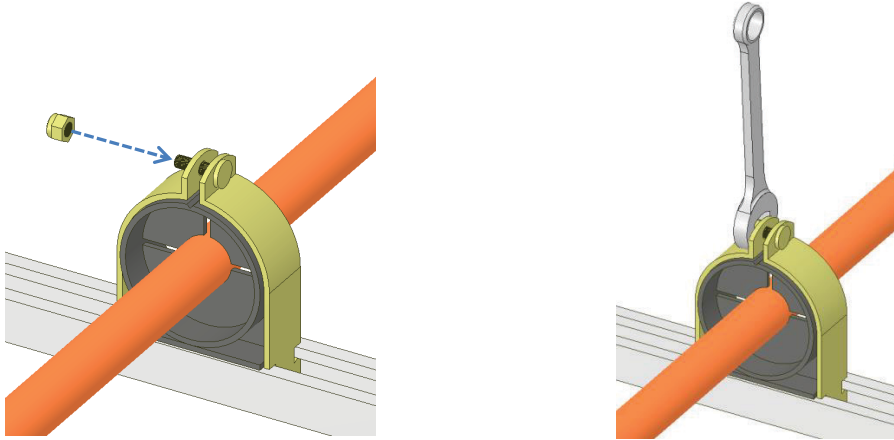
FIGURE 7897 - 7899

STRUT ACCESSORIES



INSULATION COUPLING

4. Thread locknut on stud and secure. Stud torque specification available upon request.



5. Insert insulation into the pockets on both sides up to internal wall (MFG-approved insulation adhesive on the ends of insulation is optional to further secure).

