

PF2114UWH

Undercounter Lavatory Vitreous China

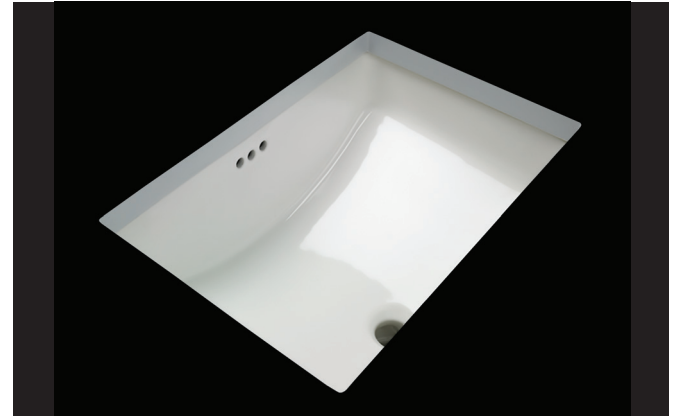


Product Features

- Vitreous china with front overflow
- Rectangle undercounter lavatory
- Mounting clips included
- Internal basin depth: 6-5/16"
- Meets ASME standard: A112.19.2M
- cUPC/IAPMO listed

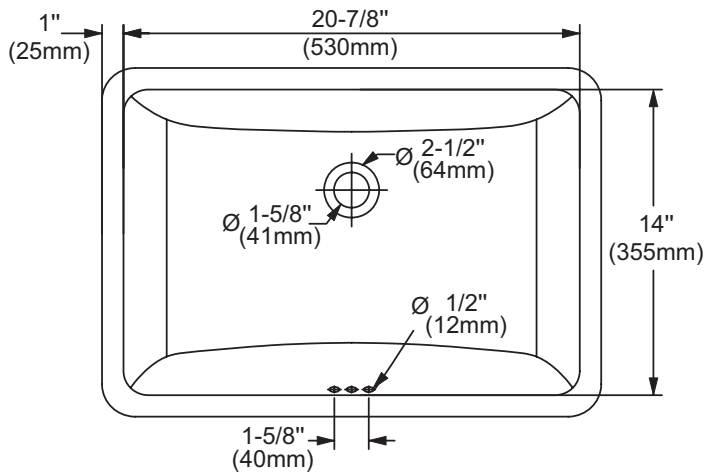
Dimensions

- Interior: 20-7/8" x 14"
- Exterior: 22-13/16" x 15-15/16"

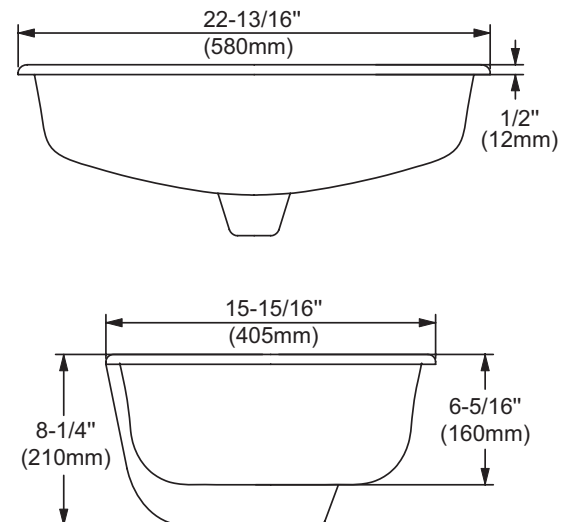


PF2114UWH

Product Specifications



Note: All dimensions and specifications are nominal and may vary: Dimensions of 8" and greater have a tolerances of +3%. Dimensions less than 8" have a tolerances of +5%.



Warranty and Codes

These products come complete with installation, operating, care and maintenance instructions. All PROFLO fixtures carry a 1 - year limited warranty. These products meet or exceed ASME/ANSI A112.19.2M. In an effort to continually improve our products, we will make design changes from time to time. We reserve the right to ship newly designed product to fill any order unless we agree in writing to do otherwise.

