



# MODA™ LAVATORY OUTLET BOX TECHNICAL SPECIFICATION

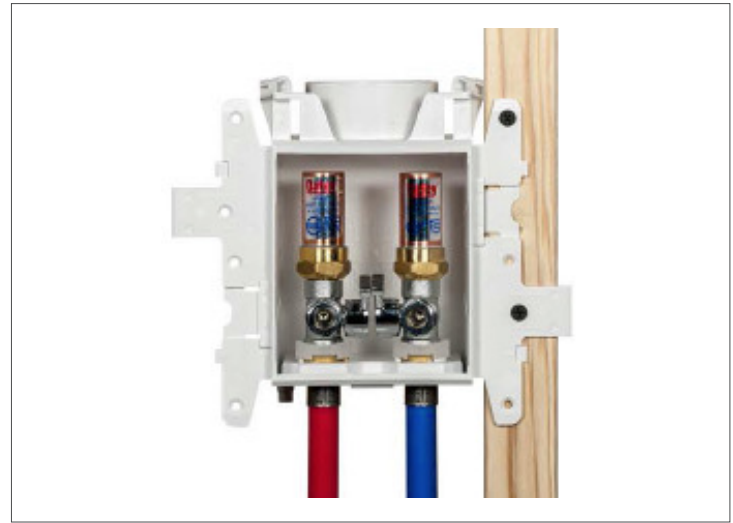
Job Name _____	Item # _____
Location _____	
Engineer _____	Contractor _____
PO # _____	Tag _____
Representative _____	

## SPECIFICATIONS

Oatey MODA™ lavatory supply boxes shall be used in residential or commercial applications requiring a supply valve recessed in the wall. The MODA™ lavatory assembly contains two 3/8" OD compression valves pre-installed in a PVC box, connected by inter-locking wing flanges that can be easily disassembled and re-assembled. The wing flanges shall allow installation on a single stud, or between two studs using the included side brackets. No additional components shall be required for a between stud installation. Valves shall be a two-piece design, permitting field replacement, and shall be secured with a stainless steel retention clip. Valves are available with or without water hammer arrestors and shall be installed upright or inverted. The assembly shall include an emergency drain port for protection from supply hose leaks.

## APPROVALS & LISTINGS

Valves	ASME A112.18.1 / CSA B125.1 NSF / ANSI 61 & 372
Water Hammer Arrestors	ASSE 1010
Boxes	IAPMO-Listed, PS-54



## FEATURES & MATERIALS

Outlet Box & Brackets	PVC
Valve Body	Forged Brass C46500 No Lead (Chrome Plated)
Valve Retention Clip	Stainless Steel
Valve O-Rings	NSF/FDA Approved EPDM (2)
Temperature Rating (Valve)	250° F / 121° C
Max Testing Pressure	150 psi (Air) / 250 psi (Water))

## DIMENSIONS

[A]:	Box Width	8.00"	[E]:	Bracket Length	8.00"
[B]:	Box Depth	3.38"	[F]:	Faceplate Width	6.00"
[C]:	Box Height	4.85"	[G]:	Faceplate Height	6.45"
[D]:	Bracket Width	4.00"	[H]:	Faceplate Depth	1.25"

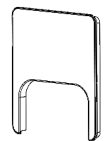
## Accessory Components Included:



Side Brackets (2)



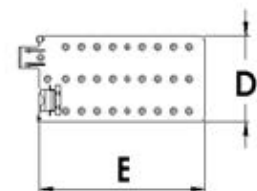
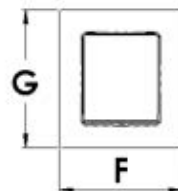
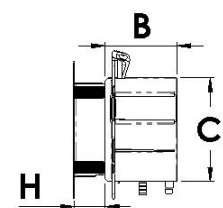
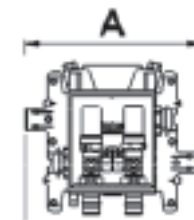
Faceplate (1)



Faceplate Insert (1)



Sticker Cover  
(For Debris Protection)



Access BIM/Revit content through [www.oatey.com](http://www.oatey.com)



# MODA™ LAVATORY OUTLET BOX TECHNICAL SPECIFICATION

## PRODUCT SELECTOR

✓	Product Number	Description	Ctn. Qty.
<b>NO HAMMER ARRESTORS</b>			
	37741	MODA Lavatory, Copper (Male), Standard	12
	37757	MODA Lavatory, Copper (Male), Contractor	12
	37743	MODA Lavatory, F1807 PEX (Brass), Standard	12
	37759	MODA Lavatory, F1807 PEX (Brass), Contractor	12
	37745	MODA Lavatory, F1960 PEX (Brass), Standard	12
	37761	MODA Lavatory, F1960 PEX (Brass), Contractor	12
	37742	MODA Lavatory, CPVC (Female), Standard	12
	37758	MODA Lavatory, CPVC (Female), Contractor	12
	37748	MODA Lavatory, Push Connect, Standard	12
<b>HAMMER ARRESTORS</b>			
	37749	MODA Lavatory, Copper (Male), Standard	12
	37765	MODA Lavatory, Copper (Male), Contractor	12
	37751	MODA Lavatory, F1807 PEX (Brass), Standard	12
	37767	MODA Lavatory, F1807 PEX (Brass), Contractor	12
	37753	MODA Lavatory, F1960 PEX (Brass), Standard	12
	37769	MODA Lavatory, F1960 PEX (Brass), Contractor	12
	37750	MODA Lavatory, CPVC (Female), Standard	12
	37766	MODA Lavatory, CPVC (Female), Contractor	12
	37756	MODA Lavatory, Push Connect, Standard	12

Standard packs shipped with faceplates on boxes, contractor packs ship with faceplates packaged separately.

Access BIM/Revit content through [www.oatey.com](http://www.oatey.com)