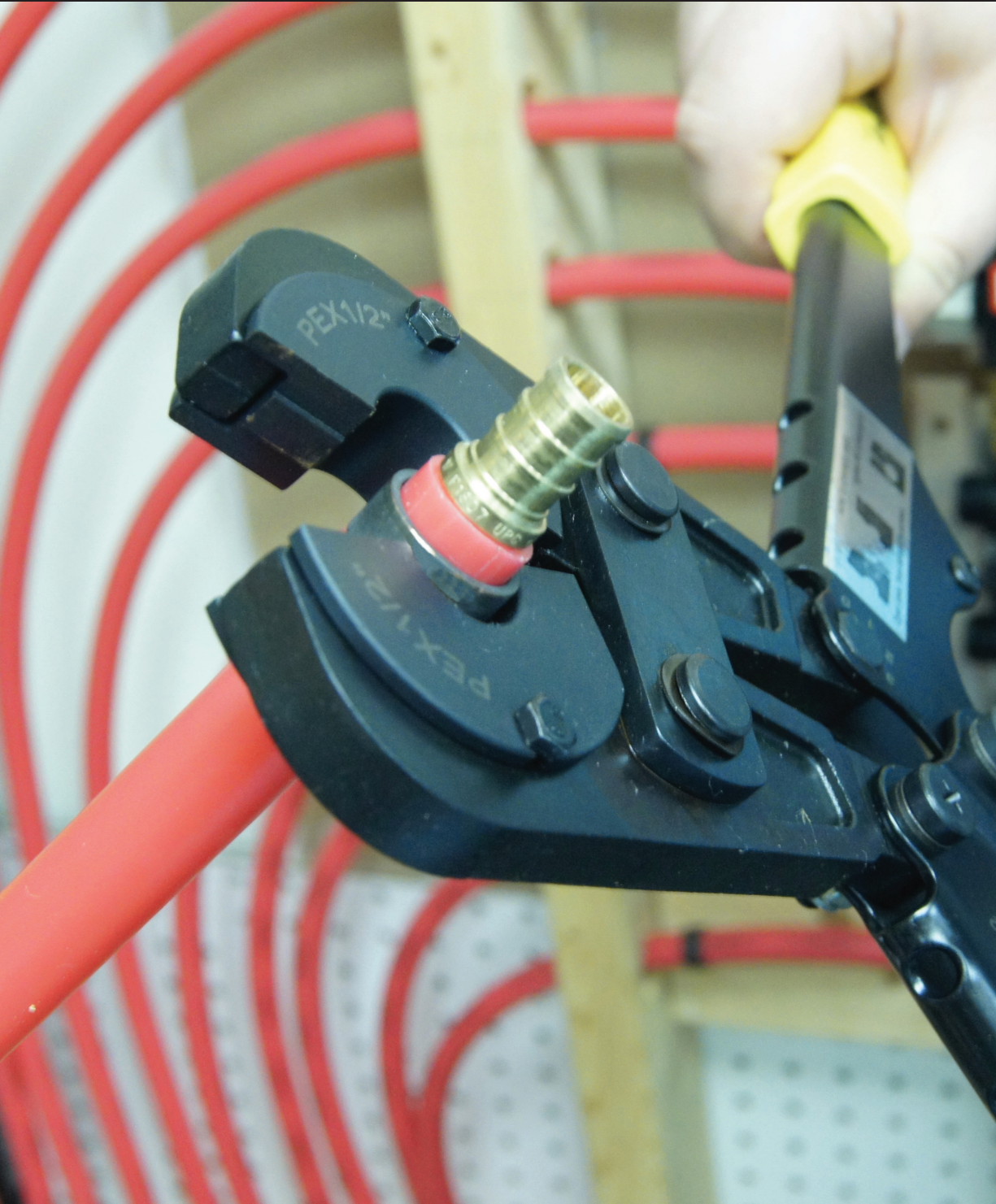


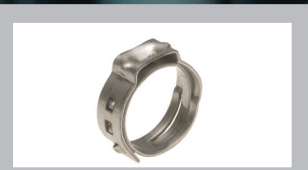
# "Apollo"®



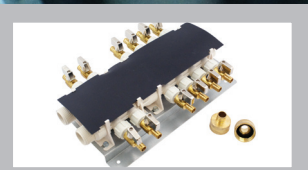
**TOOLS**



**FITTINGS**



**FASTENERS**



**MANIFOLDS**



**TUBING**

## Why Use PEX? What Is PEX?

Cross-linked polyethylene (PEX) is a high-temperature, flexible, polymer pipe. Cross-linking technology was first developed in Europe and has since come into use around the world for a variety of applications. PEX has a 30-year history of successful use in the European market with extensive testing for durability and material performance. It was first introduced in North America in 1984 where it has been primarily used for radiant floor heating, and more recently, for domestic water distribution systems. It is approved for potable hot and cold water supply systems in all model plumbing and mechanical codes across the United States including California and Canada.

## Why Plumb With PEX?

- **Easy to Install** - PEX tube is joined with an easy to install test "crimp" system; no solvent welding with messy chemicals, no chance of fire hazard possibilities due to soldering
- **Cost Effective** - When installed using Manifolds fewer fittings are needed to install PEX; meaning you save money in material and time. PEX tubing also costs less than copper tubing.
- **Availability of Pipe Sizes** - PEX piping is available in a wide range of diameters.
- **Energy Efficiency** - PEX piping minimizes heat transmission through the pipe wall.
- **Quiet** - When installed using Manifolds, PEX can be run in long lengths with smoother bends, meaning less water line noise. PEX also does not amplify sound as readily as copper tube.
- **Water Conservation** - Well designed PEX plumbing systems can reduce the wait time for hot water to reach the fixture.
- **Environmentally Sound** - PEX is an inert material and does not contain volatile organic compounds (VOCs).
- **Installation Flexibility** - PEX systems can be installed in either a conventional "branch and tee" system or a manifold system. PEX is also great for adding fixtures off of your existing copper or CPVC system.
- **Corrosion Resistant** - Because of PEX's smooth inner walls, minerals do not build up as fast as with copper tubing. It is also more resistant to the harmful effects of abrasive chemicals such as chlorine.
- **Freeze Resistant** - While freezing conditions often cause copper and CPVC tube to break or burst, causing thousands of dollars in water damage, PEX tube will expand several times its original size without damage. However, it is recommended that you follow all codes regarding water line freeze prevention.

## Running PEX Tubing

- **Extreme Temperature and Sunlight** - Keep PEX tube away from extreme temperatures - 12" away from recessed lighting and 6" away from gas vents. Also keep away from attics, crawl spaces, outside walls, or insulate per plumbing codes. Also keep out of direct sunlight.
- **Allow for Mistakes** - Leave extra tubing at the beginning and end of runs to simplify connection to manifolds and end points. Immediate connection to the manifold or transition fittings and then making the run reduces the chance of cutting tube to short.
- **Identify tubing runs** - Clearly and permanently mark each run at each end to identify the fixture it supplies (hot or cold water, bathroom sink, kitchen sink, basement toilet, etc). Do not apply adhesive labels to PEX pipe.
- **Thermal Expansion** - Because PEX tube expands and contracts at about 1" per 100' of pipe for every 10 degrees change in temperature you must allow for expansion and contraction in long runs. This can be accomplished with an offset or expansion loop.
- **PEX and Concrete** - Tubing installed within or under concrete slabs should be continuous lengths of PEX tube. No fittings beneath concrete.
- **Support the Fitting** - To prevent stress on the crimp joints, always support the tube before and after the fitting
- **Minimum Bend Radius** - Do not bend tube too tightly. The minimum recommended bend radius is six times the tube size (i.e. 1/2" tube = 3" bend radius). When making a 90 degree turn, use bend supports
- **No Metal hangers** - Metal hangers can damage PEX tube, we recommend only plastic hangers be installed. To prevent noise transfer, only use hangers that keep the tube off of the nailing surface. Hangers should be used every 32" on horizontal runs every 4' on vertical runs. Allow the tube to dip between hangers and never over tighten.
- **Tube Through Studs** - Grommets should be used when running tube through studs to prevent tube damage and reduce noise transfer. Tube that is run within 2" of a stub nailing surface must be protected with a metal stud guard.

*Continued on page 3*

PEX Tools.....	4-5	PEX Fasteners.....	14
PEX Crimp Tools.....	4	Pinch Clamps.....	14
PEX Cinch Clamp Tools.....	4	Crimp Rings.....	14
PEX Miscellaneous Tools.....	5	Pro Crimp Rings.....	14
		J-Hooks.....	14
PEXFittings.....	6-13	Manifolds.....	15
Brass Couplings.....	6	PEX Tubing.....	16-17
Brass Elbows.....	6	Blue PEX Pipe Coils.....	16
Crimp Tees.....	7	Red PEX Pipe Coils.....	16
Crimp Test Plugs.....	7	White PEX Pipe Coils.....	16
Brass Adapters - MPT.....	8	White PEX Pipe Sticks.....	17
Brass Adapters - FPT.....	8	PEX Oxygen Barrier Pipe.....	17
Copper Stubout.....	9	Part Number Index.....	18-19
Water Flex Connector.....	9	Warranty & Limitations of Liability.....	19
Valves.....	9		
Push Couplings.....	10		
Push Elbows.....	10		
Push Tees.....	11		
Push Adapters.....	11		
Push Valves.....	11		
Push Caps.....	11		
Poly Alloy Couplings.....	12		
Poly Alloy Elbows.....	12		
Poly Alloy Tees.....	13		
Poly Alloy Plugs.....	13		

## Oxygen Barrier PEX For Radiant Heating

Some applications require PEX with added oxygen barrier properties. Radiant floor heating (or hydronic heating systems) may include some ferrous (iron-containing) components which will corrode over time if exposed to oxygen. Since standard PEX tubing allows some oxygen to penetrate through the tube walls, "Oxygen Barrier PEX" tubing has been designed to prevent diffusion of oxygen into these systems.

Oxygen barrier PEX has a layer of polymer laminated to the outside surface (or sandwiched internally between PEX layers). This extra layer in your tubing will assure that no oxygen gets into your heating system. Radiant floor heating (or hydronic heating systems) may include some ferrous (iron-containing) components which will corrode over time if exposed to oxygen. The oxygen barrier and rust prevention allows you to use cast iron components in your system instead of all brass or bronze, which makes components like pumps and flanges substantially less expensive and keeps them running smoothly for longer.

TOOLS

FITTINGS

FASTENERS

MANIFOLDS

TUBING



Part Number	Description	Pack Quantity
<b>PEX CRIMP TOOLS</b>		
69PTKH0015K	PEX Multi-Head Crimp Tool Kit Includes: Crimp Jaws 3/8", 1/2", 3/4", & 1", GO / NO-GO Gauge, Adjustment Wrench	1
69PTKH0014C	PEX 1/2" & 3/4" Combo Crimp Tool	1
69PTKANG143	PEX 1/2" Angle Crimp Tool	1
69PTKH00143	PEX 1/2" Crimp Tool	1
69PTKH00144	PEX 3/4" Crimp Tool	1
69PTKH00185	PEX 1" Crimp Tool	1

<b>PEX PINCH CLAMP TOOLS</b>		
69PTBJ0010C	PEX One Hand Pinch Clamp Fastening Tool Fits Pinch Clamps - 3/8"-1", Ratcheting Action, Full Auto-Release, LED Light confirms full cinch	1
69PTKG1096	PEX Quick Pinch Clamp Tool Fits Pinch Clamps - 3/8"-1"	5



Part Number	Description	Pack Quantity
PEX MISCELLANEOUS TOOLS		
69PC02PZ	Ratcheting Pipe Cutter Cuts up to 1-1/4" plastic and vinyl tubing	12
69PC03PZ	Clamp Pipe Cutter Cuts up to 3/4" Copper and plastic pipe	12
69PTKC001	PEX Tube Cutter	5
69PTKD0009	PEX Ring Removal Tool Works on PEX Rings and Clamps 1/2"-1" Cuts in seconds, making fitting reusable	5
69PTKGONO	Go/No-Go Gauge	20
PLTL82	1/2" Quikcut Tubing Cutter Cuts 1/2" Copper, PEX, and CPVC pipe	10
PLTL83	3/4" Quikcut Tubing Cutter Cuts 3/4" Copper, PEX, and CPVC pipe	10
PLTL60	Quikcut Replacement Blades (2 Pack)	50

TOOLS  
FITTINGS  
FASTENERS  
MANIFOLDS  
TUBING

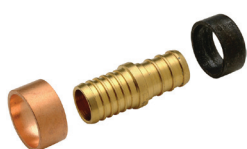
TOOLS

FITTINGS

FASTENERS

MANIFOLDS

TUBING



Part Number	Description	Pack Quantity
<b>BRASS COUPLINGS</b>		
APXC3838	3/8" PEX Coupling	5
APXC1212	1/2" PEX Coupling	40
APXC121210PK	1/2" PEX Coupling (10 Pack)	5
APXC1250PK	1/2" PEX Coupling (50 Pack)	5
APXC3434	3/4" PEX Coupling	25
APXC34345PK	3/4" PEX Coupling (5 Pack)	5
APXC3450PK	3/4" PEX Coupling (50 Pack)	5
APXC11	1" PEX Coupling	5
APXC1238	1/2" X 3/8" PEX Coupling	5
APXC1234	3/4" X 1/2" PEX Coupling	15
APXC341	1" X 3/4" PEX Coupling	5
APXBC1212	1/2" Coupling Poly B x PEX	20
APXBC12125PK	1/2" Coupling Poly B x PEX (5 Pack)	10
APXBC3434	3/4" Coupling Poly B x PEX	15

<b>BRASS ELBOWS</b>		
APXE12	1/2" Crimp Elbow	50
APXE121210PK	1/2" Crimp Elbow (10 Pack)	10
APXE1250PK	1/2" Crimp Elbow (50 Pack)	5
APXE1234	3/4" X 1/2" Crimp Elbow	5
APXE3434	3/4" Crimp Elbow	30
APXE34345PK	3/4" Crimp Elbow (5 Pack)	10
APXE3450PK	3/4" Crimp Elbow (50 Pack)	5
APXE11	1" Crimp Elbow	5
APXDEE12	1/2" X 1/2" FPT Drop Elbow	20
APXFAE1212	1/2" X 1/2" FPT Elbow Swivel	10



Part Number	Description	Pack Quantity
<b>CRIMP TEES</b>		
APXT38	3/8" Crimp Tee	5
APXT12	1/2" Crimp Tee	40
APXT1210PK	1/2" Crimp Tee (10 Pack)	5
APXT1250PK	1/2" Crimp Tee (50 Pack)	5
APXT34	3/4" Crimp Tee	15
APXT345PK	3/4" Crimp Tee (5 Pack)	5
APXT3450PK	3/4" Crimp Tee (50 Pack)	5
APXT11	1" Crimp Tee	5
APXT121234	1/2" X 1/2" X 3/4" Crimp Tee	5
APXT341212	3/4" X 1/2" X 1/2" Crimp Tee	5
APXT341234	3/4" X 1/2" X 3/4" Crimp Tee	5
APXT343412	3/4" X 3/4" X 1/2" Crimp Tee	20
APXT3434125PK	3/4" X 3/4" X 1/2" Crimp Tee (5 Pack)	5
APXT1112	1" x 1" x 1/2" Crimp Tee	5
APXT1134	1" x 1" x 3/4" Crimp Tee	5



<b>CRIMP TEST PLUGS</b>		
APXP12	1/2" Test Plug Crimp	25
APXP1210PK	1/2" Test Plug Crimp (10 Pack)	5
APXP34	3/4" Test Plug Crimp	10

TOOLS  
 FITTINGS  
 FASTENERS  
 MANIFOLDS  
 TUBING

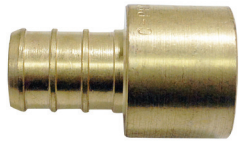
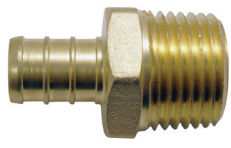
TOOLS

FITTINGS

FASTENERS

MANIFOLDS

TUBING



Part Number	Description	Pack Quantity
<b>MALE BRASS ADAPTERS</b>		
APXMA1212	1/2" X 1/2" MPT Adapter	50
APXMA121210PK	1/2" X 1/2" MPT Adapter (10 Pack)	5
APXMA1250PK	1/2" X 1/2" MPT Adapter (50 Pack)	5
APXMA1234	1/2" MPT X 3/4" Barb Adapter	10
APXMA3412	3/4" MPT X 1/2" Barb Adapter	10
APXMA3434	3/4" X 3/4" MPT Adapter	25
APXMA34345PK	3/4" X 3/4" MPT Adapter (5 Pack)	5
APXMA3450PK	3/4" X 3/4" MPT Adapter (50 Pack)	5
APXMA341	3/4" X 1" MPT Adapter	5
APXMA11	1" X 1" MPT Adapter	5
APXMS1212	1/2" X 1/2" MS Adapter Solder	10
APXMS121210PK	1/2" X 1/2" MS Adapter Solder (10 Pack)	10
APXMS3434	3/4" X 3/4" MS Adapter Solder	5
APXMSA11	1" X 1" MS Adapter Solder	5

<b>FEMALE BRASS ADAPTERS</b>		
APXFA1212	1/2" X 1/2" FPT Adapter	40
APXFA12125PK	1/2" X 1/2" FPT Adapter (5 Pack)	5
APXFA3434	3/4" X 3/4" FPT Adapter	15
APXFA34B1F	3/4" X 1" FPT Adapter	5
APXFA11	1" X 1" FPT Adapter	5
APXFS1212	1/2" X 1/2" FS Adapter Solder	20
APXFS12125PK	1/2" X 1/2" FS Adapter Solder (5 Pack)	5
APXFS3434	3/4" X 3/4" FS Adapter Solder	10
APXFSA11	1" X 1" FS Adapter Solder	5
APXF3812S	3/8" X 1/2" FPT Swivel Adapter	5
APXFB1212S	1/2" X 1/2" FPT Swivel Adapter	10
APXFB1212SW5	1/2" X 1/2" FPT Swivel Adapter (5 Pack)	5
APXFF3434S	3/4" X 3/4" FPT Brass Swivel Adapter	5





Part Number	Description	Pack Quantity
<b>MISCELLANEOUS</b>		
APXSTUB8	1/2" X 8" Copper Stubout	12
APXCONN18	18" Water Flex Connector	5



<b>VALVES</b>		
APXFF1212S	1/2" X 1/2" FPT Adapter Swivel	5
APXV1212	1/2" X 1/2" Ball Valve	12
APXV3434	3/4" X 3/4" Ball Valve	12
APXVS1238C	1/2" PEX X 3/8" C Straight Stop Valve	12
APXVA1238C	1/2" PEX X 3/8" C Angle Stop Valve	15
APXPV1238S	1/2" Push X 3/8" C Straight Stop Valve	12
APXPV1238A	1/2" Push X 3/8" C Angle Stop Valve	12

**TOOLS**  
**FITTINGS**  
**FASTENERS**  
**MANIFOLDS**  
**TUBING**

TOOLS

FITTINGS

FASTENERS

MANIFOLDS

TUBING



Part Number	Description	Pack Quantity
PUSH COUPLINGS		
ALF1	3/8" Push Coupling	5
ALF2	1/2" Push X 3/8" Push Coupling	5
ALF3	1/2" Push Coupling	30
ALF4	3/4" Push X 1/2" Push Coupling	5
ALF5	3/4" Push Coupling	10



PUSH ELBOWS		
ALF20	1/2" Push 90° Elbow	10
ALF21	3/4" Push X 1/2" Push 90° Elbow	5
ALF22	3/4" Push 90° Elbow	10
ALF24	1/2" Push X 1/2" MPT 90° Elbow	5
ALF23	1/2" CTS X 1/2" FPT Swivel Elbow	5
ALF26	1/2" Push X 1/2" FPT Drop Ear Elbow	5





Part Number	Description	Pack Quantity
<b>PUSH TEES</b>		
ALF14	1/2" Push Tee	15
ALF15	3/4" Push Tee	5
ALF16	3/4" Push X 3/4" Push X 1/2" Push Tee	5
ALF17	3/4" Push X 1/2" Push X 1/2" Push Tee	5



<b>PUSH ADAPTERS</b>		
ALF6	3/8" Push X 1/2" MIP Adapter	5
ALF7	1/2" Push X 1/2" MIP Adapter	15
ALF8	3/4" Push X 3/4" MIP Adapter	10
ALF9	1/2" Push X 1/2" FIP Adapter	10
ALF10	3/4" Push X 3/4" FIP Adapter	5



<b>PUSH VALVES</b>		
ALF30	1/2" Push Straight Valve	10
ALF31	3/4" Push Straight Valve	5



<b>PUSH CAPS</b>		
ALF27	1/2" Cap	5

TOOLS

FITTINGS

FASTENERS

MANIFOLDS

TUBING



Part Number	Description	Pack Quantity
<b>POLY ALLOY COUPLINGS</b>		
PXPAC12	1/2" PEX PA Coupling (2 Pack)	25
PXPAC34	3/4" PEX PA Coupling (2 Pack)	25
PXPAC3412	3/4" x 1/2" PEX PA Coupling (2 Pack)	25
PXPAC341	1" x 3/4" PEX PA Coupling (2 Pack)	10



Part Number	Description	Pack Quantity
<b>POLY ALLOY ELBOWS</b>		
PXPAE12	1/2" PEX PA Elbow (2 Pack)	25
PXPAE34	3/4" PEX PA Elbow (2 Pack)	25
PXPAE1234	3/4" x 1/2" PEX PA Elbow (2 Pack)	10



Part Number	Description	Pack Quantity
<b>POLY ALLOY TEES</b>		
PXPAT12	1/2" PEX PA Tee (2 Pack)	25
PXPAT121234	1/2" x 1/2" x 3/4" PEX PA Tee (2 Pack)	10
PXPAT34	3/4" PEX PA Tee (2 Pack)	25
PXPAT341212	3/4" x 1/2" x 1/2" PEX PA Tee (2 Pack)	10
PXPA343412	3/4" x 3/4" x 1/2" PEX PA Tee (2 Pack)	25
PXPAT341234	3/4" x 1/2" x 3/4" PEX PA Tee (2 Pack)	10



<b>POLY ALLOY TEST PLUGS</b>		
PXPAP12	1/2" PEX PA Plug (2 Pack)	25
PXPAP34	3/4" PEX PA Plug (2 Pack)	25

TOOLS

FITTINGS

FASTENERS

MANIFOLDS

TUBING

TOOLS



Part Number	Description	Pack Quantity
<b>PINCH CLAMPS</b>		
PXPC3810PK	3/8" Pinch Clamp (10 Pack)	10
PXPC1210PK	1/2" Pinch Clamp (10 Pack)	20
PXPC1225PK	1/2" Pinch Clamp (25 Pack)	10
PXPC3410PK	3/4" Pinch Clamp (10 Pack)	15
PXPC3425PK	3/4" Pinch Clamp (25 Pack)	10
PXPC15PK	1" Pinch Clamp (5 Pack)	10

FITTINGS



<b>CRIMP RINGS</b>		
APXCR3810PK	3/8" Crimp Rings (10 Pack)	5
APXCR1210PK	1/2" Crimp Rings (10 Pack)	30
APXCR1250PK	1/2" Crimp Rings (50 Pack)	10
APXCR3410PK	3/4" Crimp Rings (10 Pack)	15
APXCR3425PK	3/4" Crimp Rings (25 Pack)	10
APXCR15PK	1" Crimp Rings (5 Pack)	5

FASTENERS



<b>PRO CRIMP RINGS</b>		
APXCR12LT	1/2" Pro Crimp Rings (10 Pack)	5
APXCR34LT	3/4" Pro Crimp Rings (10 Pack)	5

MANIFOLDS



<b>J-HOOKS</b>		
APXJH1225PK	1/2" J-Hooks (25 Pack)	4
APXJH3425PK	3/4" J-Hooks (25 Pack)	4

TUBING



<b>PIPE BENDS</b>		
PXBEND12	1/2" Pipe Bend	15
PXBEND34	3/4" Pipe Bend	10

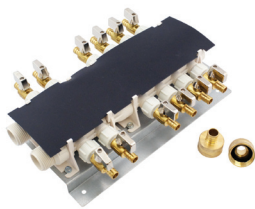
## Why Use Manifolds

- Save Time and Money - Manifolds allow you to make longer continuous runs of PEX pipe, meaning you buy fewer fittings and spend less time installing.
- Fewer Possible Leaks - Longer continuous runs with fewer crimp connections means fewer chances of leaks and avoiding the possibility of thousands of dollars in water damage.
- Controls Scalding - When plumbed so that each branch line feeds only one fixture, the manifold greatly reduces pressure fluctuations and temperature swings that cause scalding.
- Quiet Plumbing - Longer runs of pipe using fewer fittings means smoother bends and turns which reduces line noise and “water hammer”.

The Manifold Systems are available in a wide range of outlet ports, and include the appropriate number of valves for each outlet. Each manifold has a galvanized back plate for easy mounting to any structure. The cover plate, for labeling purposes, is constructed of 1/4" ABS. All manifolds are bolted to the back plate, rather than screwed.

Each manifold consists of two inlet ports that supply the dual chambers. Typically one inlet is used for cold water supply, and the other inlet is used for hot water supply. However, both inlets may be used for either hot or cold water. The inlets are not temperature specific. The water inlets connections are 3/4" PEX Barb, The outlets are 1/2" MPT. 1/2" FPT Swivel x Barb valves are included.

Each manifold is individually boxed, and includes red and blue labels for indicating the destination fixtures.



Part Number	Description	Pack Quantity
<b>MANIFOLDS</b>		
6907912CP	12 Port Manifold	1
6907984CP	16 Port Manifold	1
6907920CP	20 Port Manifold	1
6907924CP	24 Port Manifold	1
6907928CP	28 Port Manifold	1
6907932CP	32 Port Manifold	1
6907936CP	36 Port Manifold	1

TOOLS

FITTINGS

FASTENERS

MANIFOLDS

TUBING

# PEX Tubing

PEX tubing is cross-linked, high-density polyethylene. It's available in white, red, or blue colors for easy identification of hot and cold water lines. Apollo PEX tubing is type PEX-B (PE-Xb, PEXb). PEX tubing is for use in hot and cold potable water distribution systems as well as hydronic radiant heating systems. PEX tubing can also be used in "continuously recirculating" plumbing systems up to 140° F while maintaining chlorine resistance.

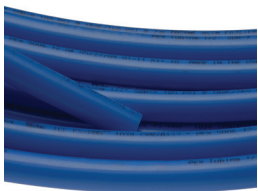
TOOLS

FITTINGS

FASTENERS

MANIFOLDS

TUBING



Part Number	Description	Pack Quantity
<b>PEX COILS - For potable water only</b>		
APPB10012	PEX Pipe 1/2" x 100' Blue	3
APPB10034	PEX Pipe 3/4" x 100' Blue	2
APPB30012	PEX Pipe 1/2" x 300' Blue	1
APPB30034	PEX Pipe 3/4" x 300' Blue	1
APPB50012	PEX Pipe 1/2" x 500' Blue	1
APPB50034	PEX Pipe 3/4" x 500' Blue	1
APPR10012	PEX Pipe 1/2" x 100' Red	3
APPR10034	PEX Pipe 3/4" x 100' Red	2
APPR30012	PEX Pipe 1/2" x 300' Red	1
APPR30034	PEX Pipe 3/4" x 300' Red	1
APPR50012	PEX Pipe 1/2" x 500' Red	1
APPR50034	PEX Pipe 3/4" x 500' Red	1
APPW10012	PEX Pipe 1/2" x 100' White	3
APPW10034	PEX Pipe 3/4" x 100' White	2
APPW1001	PEX Pipe 1" x 100' White	1
APPW30012	PEX Pipe 1/2" x 300' White	1
APPW30034	PEX Pipe 3/4" x 300' White	1
APPW50012	PEX Pipe 1/2" x 500' White	1
APPW50034	PEX Pipe 3/4" x 500' White	1





Part Number	Description	Pack Quantity
<b>PEX STICKS - For potable water only</b>		
APPW514	PEX Pipe 1/4" x 5' White	10
APPW538	PEX Pipe 3/8" x 5' White	10
APPW512	PEX Pipe 1/2" x 5' White	30
APPW534	PEX Pipe 3/4" x 5' White	20
APPW51	PEX Pipe 1" x 5' White	5
APPW1012	PEX Pipe 1/2" x 10' White	20
APPW1034	PEX Pipe 3/4" x 10' White	20

### PEX Oxygen Barrier Tubing

Oxygen Barrier PEX tubing has been designed to prevent diffusion of oxygen into hydronic radiant heating systems. A layer of polymer is laminated to the outside surface which is highly resistant to the passage of oxygen. Oxygen Barrier PEX tubing is good for hydronic radiant heating, cooling, and snow melting systems using water or water/glycol mix. The tubing may be installed in concrete, gypsum based lightweight concrete, sand, asphalt, in or under wood flooring, or behind wallboard or plaster. Oxygen Barrier PEX tubing may also be used as transfer lines for baseboard heating systems with a maximum operating temperature of 200° F @ 80 psi. Apollo PEX tubing is type PEX-B (PE-Xb, PEXb).



Part Number	Description	Pack Quantity
<b>PEX OXYGEN BARRIER - For use with Radiant Heating</b>		
APPOB2512	1/2" x 25' Oxygen Barrier PEX Pipe	1
APPOB30012	1/2" x 300' Oxygen Barrier PEX Pipe	1
APPOB10034	3/4" x 100' Oxygen Barrier PEX Pipe	1
APPOB30034	3/4xX 300' Oxygen Barrier PEX Pipe	1

TOOLS  
FITTINGS  
FASTENERS  
MANIFOLDS  
TUBING

# PART NUMBER INDEX

TOOLS

FITTINGS

FASTENERS

MANIFOLDS

TUBING

6907912CP.....	15	APPB30034.....	16	APXCR3410PK.....	14
6907920CP.....	15	APPB50012.....	16	APXCR3425PK.....	14
6907924CP.....	15	APPB50034.....	16	APXCR34LT.....	14
6907928CP.....	15	APPOB10034.....	17	APXCR3810PK.....	14
6907932CP.....	15	APPOB2512.....	17	APXDEE12.....	6
6907936CP.....	15	APPOB30012.....	17	APXE11.....	6
6907984CP.....	15	APPOB30034.....	17	APXE12.....	6
69PC02PZ.....	5	APPR10012.....	16	APXE121210PK.....	6
69PC03PZ.....	5	APPR10034.....	16	APXE1234.....	6
69PTBJ0010C.....	4	APPR30012.....	16	APXE1250PK.....	6
69PTKANG143.....	4	APPR30034.....	16	APXE3434.....	6
69PTKC001.....	5	APPR50012.....	16	APXE34345PK.....	6
69PTKD0009.....	5	APPR50034.....	16	APXE3450PK.....	6
69PTKG1096.....	4	APPW1001.....	16	APXF3812S.....	8
69PTKGONO.....	5	APPW10012.....	16	APXFA11.....	8
69PTKH00143.....	4	APPW10034.....	16	APXFA1212.....	8
69PTKH00144.....	4	APPW1012.....	17	APXFA12125PK.....	8
69PTKH0014C.....	4	APPW1034.....	17	APXFA3434.....	8
69PTKH0015K.....	4	APPW30012.....	16	APXFA34B1F.....	8
69PTKH00185.....	4	APPW30034.....	16	APXFAE1212.....	6
ALF1.....	10	APPW50012.....	16	APXFB1212S.....	8
ALF10.....	11	APPW50034.....	16	APXFB1212SW5.....	8
ALF14.....	11	APPW51.....	17	APXFF1212S.....	9
ALF15.....	11	APPW512.....	17	APXFF3434S.....	9
ALF16.....	11	APPW514.....	17	APXFS1212.....	8
ALF17.....	11	APPW534.....	17	APXFS12125PK.....	8
ALF2.....	10	APPW538.....	17	APXFS3434.....	8
ALF20.....	10	APXBC1212.....	6	APXFSA11.....	8
ALF21.....	10	APXBC12125PK.....	6	APXJH1225PK.....	14
ALF22.....	10	APXBC3434.....	6	APXJH3425PK.....	14
ALF23.....	10	APXC11.....	6	APXMA11.....	8
ALF24.....	10	APXC1212.....	6	APXMA1212.....	8
ALF26.....	10	APXC121210PK.....	6	APXMA121210PK.....	8
ALF27.....	11	APXC1234.....	6	APXMA1234.....	8
ALF3.....	10	APXC1238.....	6	APXMA1250PK.....	8
ALF30.....	11	APXC1250PK.....	6	APXMA341.....	8
ALF31.....	11	APXC341.....	6	APXMA3412.....	8
ALF4.....	10	APXC3434.....	6	APXMA3434.....	8
ALF5.....	10	APXC34345PK.....	6	APXMA34345PK.....	8
ALF6.....	11	APXC3450PK.....	6	APXMA3450PK.....	8
ALF7.....	11	APXC3838.....	6	APXMS1212.....	8
ALF8.....	11	APXC0NN18.....	9	APXMS121210PK.....	8
ALF9.....	11	APXCR1210PK.....	14	APXMS3434.....	8
APPB10012.....	16	APXCR1250PK.....	14	APXMSA11.....	8
APPB10034.....	16	APXCR12LT.....	14	APXP12.....	7
APPB30012.....	16	APXCR15PK.....	14	APXP1210PK.....	7

APXP34.....	7	APXT3450PK.....	7	PXP AE1234.....	12
APXPV1238A.....	9	APXT38.....	7	PXP AE34.....	12
APXPV1238S.....	9	APXV1212.....	9	PXPAP12.....	13
APXSTUB8.....	9	APXV3434.....	9	PXPAP34.....	13
APXT11.....	7	APXVA1238C.....	9	PXPAT12.....	13
APXT1112.....	7	APXVS1238C.....	9	PXPAT121234.....	13
APXT1134.....	7	PLTL60.....	5	PXPAT34.....	13
APXT12.....	7	PLTL82.....	5	PXPAT341212.....	13
APXT1210PK.....	7	PLTL83.....	5	PXPAT341234.....	13
APXT121234.....	7	PXBEND12.....	14	PXPAC1210PK.....	14
APXT1250PK.....	7	PXBEND34.....	14	PXPAC1225PK.....	14
APXT34.....	7	PXPA343412.....	13	PXPAC15PK.....	14
APXT341212.....	7	PXPAC12.....	12	PXPAC3410PK.....	14
APXT341234.....	7	PXPAC34.....	12	PXPAC3425PK.....	14
APXT343412.....	7	PXPAC341.....	12	PXPAC3810PK.....	14
APXT3434125PK.....	7	PXPAC3412.....	12		
APXT345PK.....	7	PXP AE12.....	12		

## Warranty & Limitations of Liability

Conbraco Industries, Inc. warrants, to its initial purchaser only, that its products which are delivered to this initial purchaser will be of the kind described in the order or price list and will be free of defects in workmanship or material for a period of FIVE years from the date of delivery to you, our initial purchaser. This warranty applies to Apollo brand product with "Made in the USA" markings only.

Should any failure to conform to this warranty appear within FIVE years after the date of the initial delivery to our initial purchaser, Conbraco will, upon written notification thereof and substantiation that the goods have been stored, installed, maintained and operated in accordance with Conbraco's recommendations and standard industry practice, correct such defects by suitable repair or replacement at Conbraco's own expense.

**APOLLO INTERNATIONAL PRODUCTS:** Conbraco Industries, Inc. warrants its international products, to its initial purchaser only, that its international products which are delivered to this initial purchaser will be of the kind described in the order or price list and will be free of defects in workmanship or material for a period of TWO years from the date of delivery to you, our initial purchaser.

THIS WARRANTY IS EXCLUSIVE AND IS IN LIEU OF ANY IMPLIED WARRANTY OF MERCHANTABILITY, FITNESS FOR A PARTICULAR PURPOSE OR OTHER WARRANTY OF QUALITY, WHETHER EXPRESSED OR IMPLIED, EXCEPT THE WARRANTY OF TITLE AND AGAINST PATENT INFRINGEMENT. Correction of non-conformities, in the manner and for the period of time provided above, shall constitute fulfillment of all liabilities of Conbraco to our initial purchaser, with respect to the goods, whether based on contract, negligence, strict tort or otherwise. It is the intention of Conbraco Industries, Inc. that no warranty of any kind, whether expressed or implied shall pass through our initial purchaser to any other person or corporation.

**LIMITATION OF LIABILITY:** CONBRACO INDUSTRIES, INC. SHALL NOT UNDER ANY CIRCUMSTANCES BE LIABLE FOR SPECIAL OR CONSEQUENTIAL DAMAGES SUCH AS, BUT NOT LIMITED TO, DAMAGES TO OR LOSS OF OTHER PROPERTY OR EQUIPMENT, LOSS OF PROFITS OR REVENUE, COST OF CAPITAL, COST OF PURCHASED OR REPLACEMENT GOODS, OR CLAIMS OF CUSTOMERS OF OUR INITIAL PURCHASER. THE REMEDIES OF OUR INITIAL PURCHASER, AND ALL OTHERS, SET FORTH HEREIN, ARE EXCLUSIVE, AND THE LIABILITY OF CONBRACO WITH RESPECT TO SAME SHALL NOT, EXCEPT AS EXPRESSLY PROVIDED HEREIN, EXCEED THE PRICE OF THE GOODS UPON WHICH SUCH LIABILITY IS BASED.

\*It is the end user's responsibility to confirm that items intended for use satisfy local codes and standards.

TOOLS

FITTINGS

FASTENERS

MANIFOLDS

TUBING

Matthews, NC 28105  
1-888-229-2874

Catalog\_Apollo PEX 12/12/14

[www.apolloflow.com](http://www.apolloflow.com)