

## Test Button and LED Indicator

### Test Button functions

#### 1. While main power is on:

A quick press of the test button, (3 seconds), simulates the "main power outage" or "emergency mode". The light fixture will come on in this case – it will be running on battery power. Pressing test button for 3-6 seconds puts the unit into the monthly self-check routine. (approx. 3 minutes runtime).

Press test button again any time to stop the routine.

As the system runs its check on the battery power and circuit connections, the LED indicator will flash green @ 1 cycle/second.

Pressing test button for 6 seconds puts the unit into the annual self-check routine (up to 9 minutes runtime).

#### NOTE:

**The system will completely discharge the battery during this routine.**

Press test button again any time to stop the routine.

As the system runs its more detailed annual check on the battery power and circuit connections, the LED indicator will quickly flash green @ 3 cycle/second.

#### 2. While in Emergency Status (main power outage):

Pressing test button for 6 seconds shuts off the unit. Press again to turn it back on. Pressing test button for 6 seconds complete shuts off emergency output. In this state, the system will not function unless the main power is reset.

#### LED indicator colors/functions:

**Red:** Battery is charging.

**Green:** Battery at full charge

**Yellow:** Check system - possible battery replacement needed or system maintenance required.

**Green Flashing:** Monthly or annual checking mode is running.

**Off:** Indicates a power outage. When the Battery Backup unit is in "Emergency Mode" the LED indicator will be "Off".

**Minimum charge time:** 24 hours

### ONE YEAR LIMITED WARRANTY

The purchased product is covered with a 1 year warranty in respect of any defect in material or workmanship after purchase date. SATCO shall bear no responsibility on account of guarantee, as well as shall bear no liability for the unit, or if any unauthorized alteration or repair followed.

### CLEANING AND STORAGE

- Clean with a soft or damp cloth. While cleaning with damp cloth make sure the power is off.
- Do not clean with liquids or abrasives.
- Store at room temperature.

## Operation manual Emergency battery backup disk Model: S9780



Thank you for purchasing our product. This device has been manufactured from components with advanced optoelectronics to ensure high reliability and long life. Before assembling please read this Operation Manual carefully and save in a safe place for future reference. Please note that all electrical connections must be in accordance with local and National Electrical Code standards as well as local building codes. In case you are not familiar with proper wiring connections and building codes, consult a qualified electrician.

### Safety recommendations

1. The lighting shall be mounted at a height of maximum 4.0m.
2. Do not use outdoors.
3. Do not mount near gas or electric heaters. Do not let power supply cords touch hot surfaces.
4. Use caution when changing batteries - TURN ALL POWER OFF, BOTH WALL SWITCH AND MAIN POWER! Use only designated battery as supplied with original unit or as listed for use with this product. Dispose of old battery in designated disposal location.
5. Equipment should be mounted in locations at heights where it will not be subjected to tampering by unauthorized personnel.
6. This product is designed for use with EMR Series Lighting Fixtures only. Must not be used with any other fixture.
7. Do not use this product for other than its intended use.

All servicing should be performed by professional personnel.  
**SAVE THESE INSTRUCTIONS.**

### Specifications:

**Model: S9780**

**Light Fixture Wattage: 20W**

**Input Voltage: 277VAC**

**Input Current: 230mA Max**

**Installation: 3" or 4" Junction box**

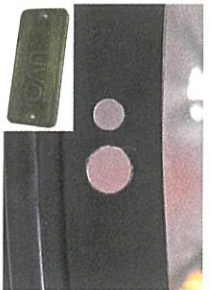
Patent pending



## Installation



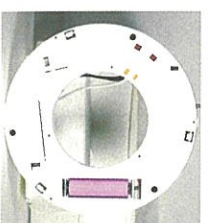
**Use:**  
Emergency battery back up unit can only be used with Satco/Nuvo EMR Series fixtures using an LED module.



**Step 1**  
Remove the Nuvo Lighting name plate from the fixture to reveal the indicator light and test button mounting holes.



**Step 2**  
From the outside of the fixture, insert the test button, wires first, into the larger hole and secure with lock nuts from other side.

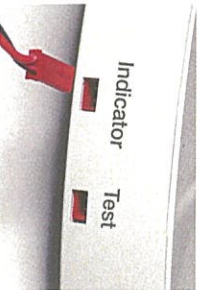


**Battery Replacement**  
Batteries can be accessed by removing the LED module. There is no need to take the fixture down.

Battery specifications (3 required)  
\* 2600mAh 3.7V 18650 Rechargeable Lithium Battery  
\*Type Lithium Ion  
\*Battery Model 18650  
\*Battery Capacity 2600 mAh  
\*Battery Voltage 3.7V  
\*Rechargeable Yes  
\*Rechargeable Times 1000



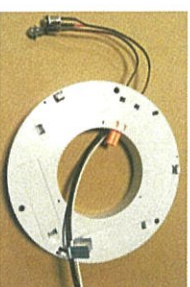
**Step 3**  
From the outside of the fixture, insert the indicator light, wires first, into the smaller hole and secure with lock nuts from other side.



**Step 4**  
Plug the indicator light into the battery back up unit.



**Step 5**  
Plug the test button into the battery back up unit.



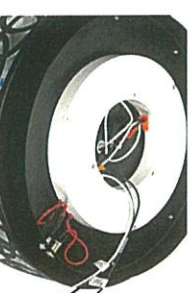
**Option 1**  
**As 24/7 lighting:**

Connect the two black wires (labeled as "Continuous Main Power" and "Switched Line") from the battery backup to the black main wire in the junction box and connect the white ("Neutral") to white from the battery backup fixture to junction box wires.

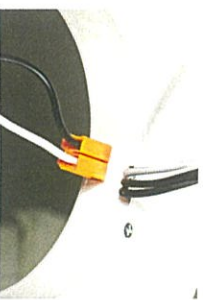


**Option 2**  
**As dedicated Emergency Lighting Only:**

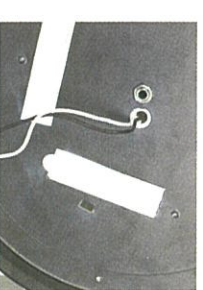
Connect the black wire (labeled as "Continuous Main Power") from the battery backup to the black main wire in the junction box and connect the white ("Neutral") to white from the battery backup fixture to junction box wires. Screw wire nut over the "Switched Line" and leave unconnected.



**Option 3**  
**When installing in a "switched" application - a 3 wire circuit is required.** Connect the black wire marked "Continuous Main Power" to the constant (un-switched) black wire from the junction box. Connect the black wire marked "Switched Line" to the switched black wire in the junction box. Connect the White "Neutral" wire from the battery backup to the white wire from the junction box.



**Step 6**  
Plug the fixture connector from LED light source into the battery back up.



**Step 7**  
On the back of the fixture, locate the slots that correspond to the tabs on the battery back up unit.



**Step 8**  
Line up the tabs on the battery back up with the slots on the back of the fixture and press into place.