

## FIGURE 7898

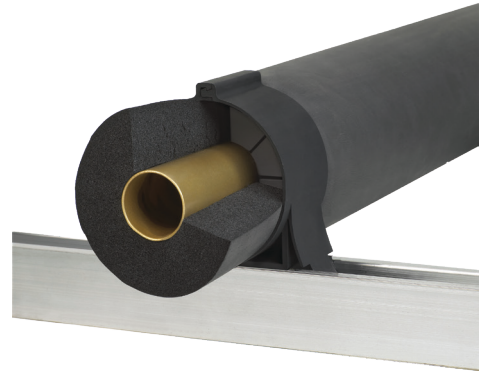
### STRUT ACCESSORIES



#### INSULATION COUPLING

FNW Insulation Couplings allow insulated copper tube lines to be secured by inserting into the strut channel and locking the top. No metal clamps needed.

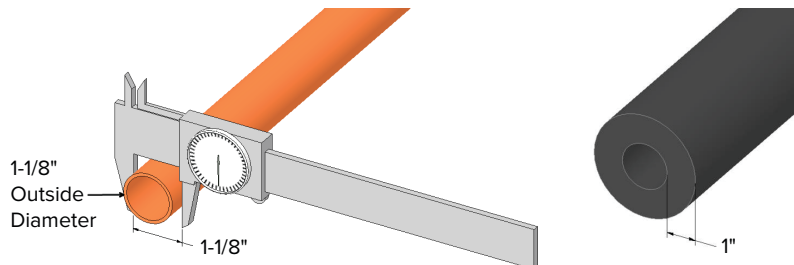
Tubing supported and secured by internal part design. Insulation is to be inserted inside coupling with insulation contacting internal wall. Secondary operations are not needed. Entire assembly can be assembled or disassembled with a single hand or power wrench.



#### Use Recommendations

1. Coupling spacing should be no more than 60 inches.
2. Install clamps as close as possible to each side of bend to prevent movement.
3. Keep conductor runs as straight as possible.
4. Overwrap of coupling with insulation is not required.
5. Acceptable for horizontal installations only.
6. For use with elastomeric insulation.

1. Determine correct size of copper tube (outside diameter).

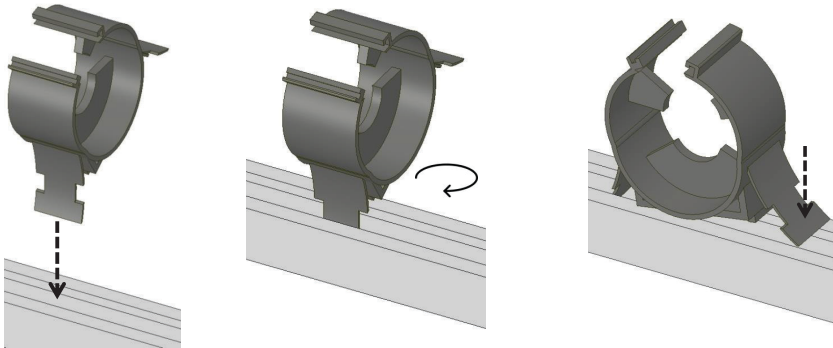


## FIGURE 7898

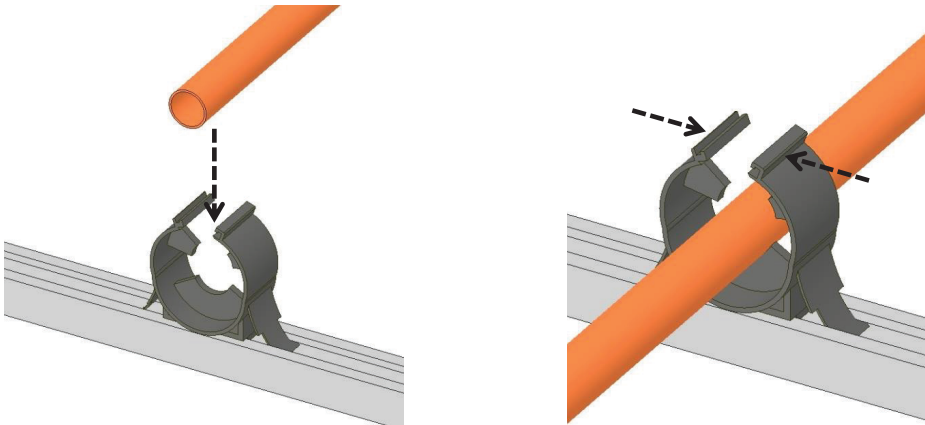
### STRUT ACCESSORIES

#### INSULATION COUPLING

2. Place the coupling into channel, leg first, rotating ninety degrees. Press down on the other leg to snap it into place within the channel.



3. Place the copper tubing into open coupling and squeeze the top of the coupling together to snap closed and secure tubing.



4. Thread locknut on stud and secure. Stud torque specification available upon request.

