

POLARIS™ HIGH EFFICIENCY

The Polaris is a light duty, fully condensing high efficiency commercial gas water heater. It can provide endless hot water* and can be used for a combination of domestic hot water and space heating.

CONDENSING DESIGN

- Operates at up to 96% thermal efficiency which saves money on operating costs compared to a standard 80% efficient gas water heater.
- Helical internal heat exchanger keeps hot combustion gases in the tank longer to extract more heat into the water.

STAINLESS STEEL CONSTRUCTION

- Tank and helical heat exchanger are constructed from 444 stainless steel for excellent corrosion resistance without the need for an anode.

WHISPER QUIET OPERATION

- Ultra quiet blower and burner to minimize noise.

POWER DIRECT VENT DESIGN

- Direct vent using PVC, CPVC or Polypropylene (solid core only) through a sidewall or roof.
- Optional concentric vent kit.
- 2" pipe vents up to 52 equivalent feet (100-150k BTU/hr inputs)
- 3" pipe vents up to 130 equivalent feet

ADVANCED ELECTRONIC CONTROL

- Large touchscreen display
- Precise temperature control
- Advanced water heater status and diagnostics

FULLY SERVICEABLE FROM THE FRONT

- Two front access panels expose all serviceable components. Modular components are all easily removed.

ULTRA-LOW NOX MODULATING GAS BURNER

- Enhanced Ultra-low NOx burner complies with SCAQMD Rule 1146.2 and other Air Quality Management Districts with similar requirements for NOx emissions of less than 14 ng/j.
- Modulating burner maintains high efficiency operation at lower input rates.

SIDE-MOUNTED HOT AND COLD RECIRCULATING TAPS

- Polaris can be easily installed with a recirculation system or as part of a combined domestic & space heating system.

AVAILABLE IN NATURAL GAS OR PROPANE

CSA CERTIFIED AND ASME RATED T&P RELIEF VALVE

STANDARDS AND CERTIFICATIONS

- Design-certified by CSA International according to ANSI Z21.10.3 – CSA 4.3 Standards.
- Meets UBC, CEC, and ICC National Codes.
- Meets the thermal efficiency and standby loss requirements of the U. S. Department of Energy and current edition of ASHRAE/IES 90.1.

3-YEAR LIMITED TANK AND 1-YEAR PARTS WARRANTY

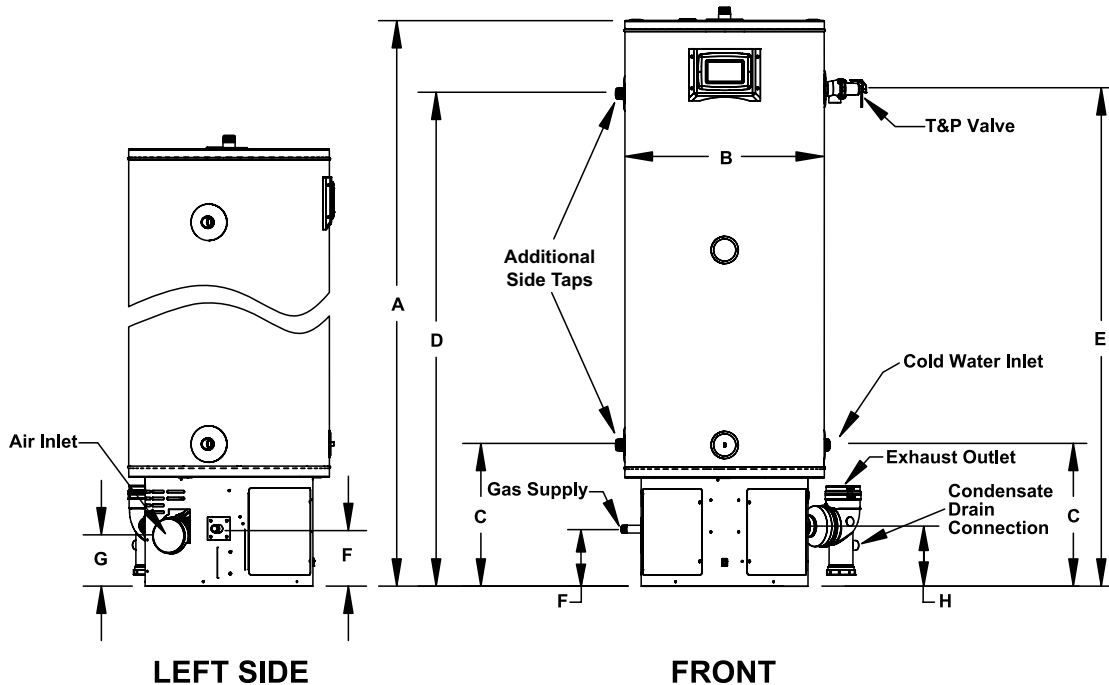
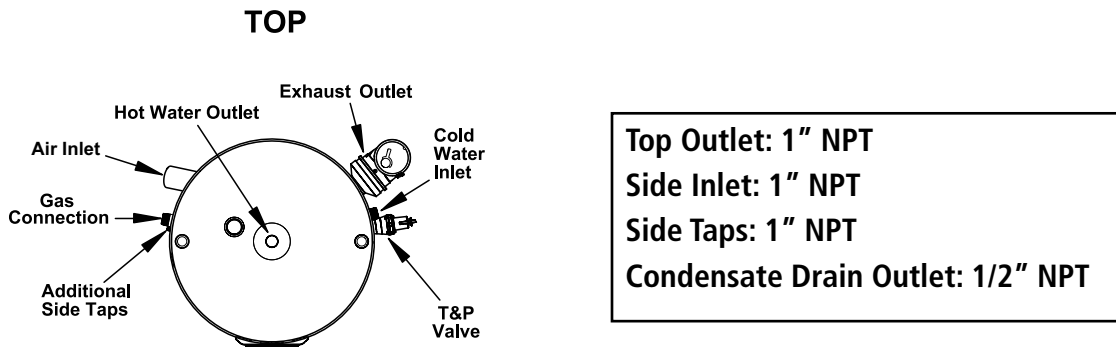
- For complete information, consult written warranty or go to hotwater.com.

*When sized appropriately. Model BTS199 can deliver 6.95 GPM continuous flow, based on 65°F inlet water temperature, 120°F outlet temperature.



Model Number	Gallon Capacity	BTU/h Input Gallon Per Hour	Thermal Efficiency	Recovery @ 90° Rise Gallon Per Hour	Dimensions in Inches		Vent Connection	1" Water Connections		T&P	Gas Supply*	Approx. Shipping Weight (lbs)
					A	B		C	D			
BSS 130	34	130,000	96%	165	48-1/2	22	2 or 3	15-3/4	40-1/2	41	6-3/8	150
BSS 150	34	150,000	94%	190	48-1/2	22	2 or 3	15-3/4	40-1/2	41	6-3/8	150
BTS 130	50	130,000	95%	165	62-3/8	22	2 or 3	15-3/4	54-1/2	55	6-3/8	176
BTS 150	50	150,000	95%	190	63-3/4	22	2 or 3	15-3/4	55-3/4	56-1/4	6-3/8	180
BTS 175	50	175,000	96%	222	63-3/4	22	3	15-3/4	55-3/4	56-1/4	6-3/8	180
BTS 199	50	199,000	96%	253	63-3/4	22	3	15-3/4	55-3/4	56-1/4	6-3/8	180

Available in Propane (LP) gas. Specify when ordering Propane (LP) gas.
Models certified for sea level to 7,700 ft. elevation.



SUGGESTED SPECIFICATION

(Natural or Propane) gas water heater(s) shall be A. O. Smith Polaris model with storage capacity _____ and input rating of _____ BTUs per hour. Water heater(s) shall have: 1: Tank constructed of 444 stainless steel with submerged combustion chamber. 2: Advanced electronic control w/ LCD display and actual diagnostics. 3: A 3-year limited warranty against tank leaks. Water heater(s) shall meet the thermal efficiency and standby loss requirements of the U.S. Department of Energy and current edition of ASHRAE/IES 90.1 and be design certified by CSA International according to ANSI Z21.10.3-CSA 4.3 standards governing storage tank water heaters.

For Technical Information, call 800-527-1953. A. O. Smith Corporation reserves the right to make product changes or improvements without prior notice.