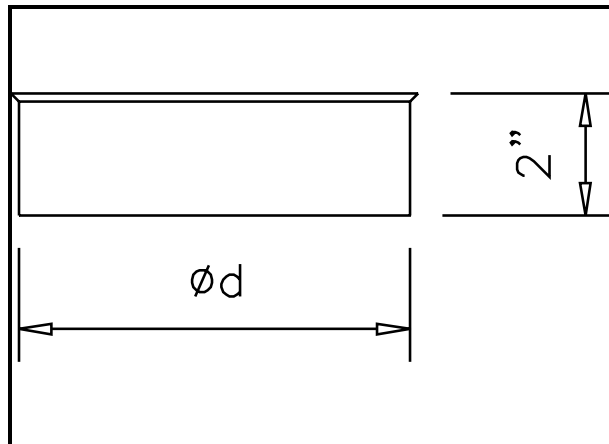


End Caps



Technical Data

- Galvanized Steel (ASTM A653 and A924)
- G-60 Galvanized Coating (ASTM A653 and ASTM A90)
- Available in Specialty Metals:
 - Aluminum (ASTM B209 Alloy 3003 Temper H14)
 - 304 Stainless Steel (ASTM A480 2B Finish)
- Pressure Rating: Designed per SMACNA Third Edition 2005 Section 4.8 Figure 4-6 Branch Connections
- Dimensional Tolerance: $\pm 1/4"$

Product Availability

Size (Ød)	Gauge Availability		Quantity	
	26 Ga.	24 Ga.	Carton	Skid
3"	Yes	-	30	840
4"	Yes	Yes	25	700
5"	Yes	Yes	25	700
6"	Yes	Yes	25	700
7"	Yes	Yes	25	700
8"	Yes	Yes	25	700
9"	Yes	Yes	40	480
10"	Yes	Yes	40	480
12"	Yes	Yes	20	280
14"	Yes	Yes	20	280
16"	-	Yes	10	160
18"	-	Yes	10	100
20"	-	Yes	10	120
22"	-	‡	‡	‡
24"	-	‡	‡	‡

‡ Consult factory for availability.

Part Number Schematic

Example: **ECC10GA26** = End Cap with a Crimped End in 26 Ga. Galvanized Steel with Crimped Ends.

EC	P	10	GA	26
End Cap	Large End C - Crimped (Std.) P - Plain (Opt.)	End Cap Diameter (Ød)	Material GA-Galvanized (Std.) AL - Aluminum S4 - 304 S.S.	Gauge GA - 26, 24 AL - 32 S4 - 26

Items in green denote available options