



SERVICE PARTS LIST

BULLETIN NO.
54-05-5320

SPECIFY CATALOG NO. AND SERIAL NO. WHEN ORDERING PARTS		REVISED BULLETIN	DATE
SDS MAX CHISEL BOOT			Jan. 2020
CATALOG NO.	5318-DE	WIRING INSTRUCTION	
	STARTING SERIAL NO.		

EXAMPLE:
00 0 Component Parts (Small #)
Are Included When Ordering
The Assembly (Large #).

Note: There are different versions for the 5318-DE SDS Max Chisel Boot. Review both pages to determine which version is required when ordering.

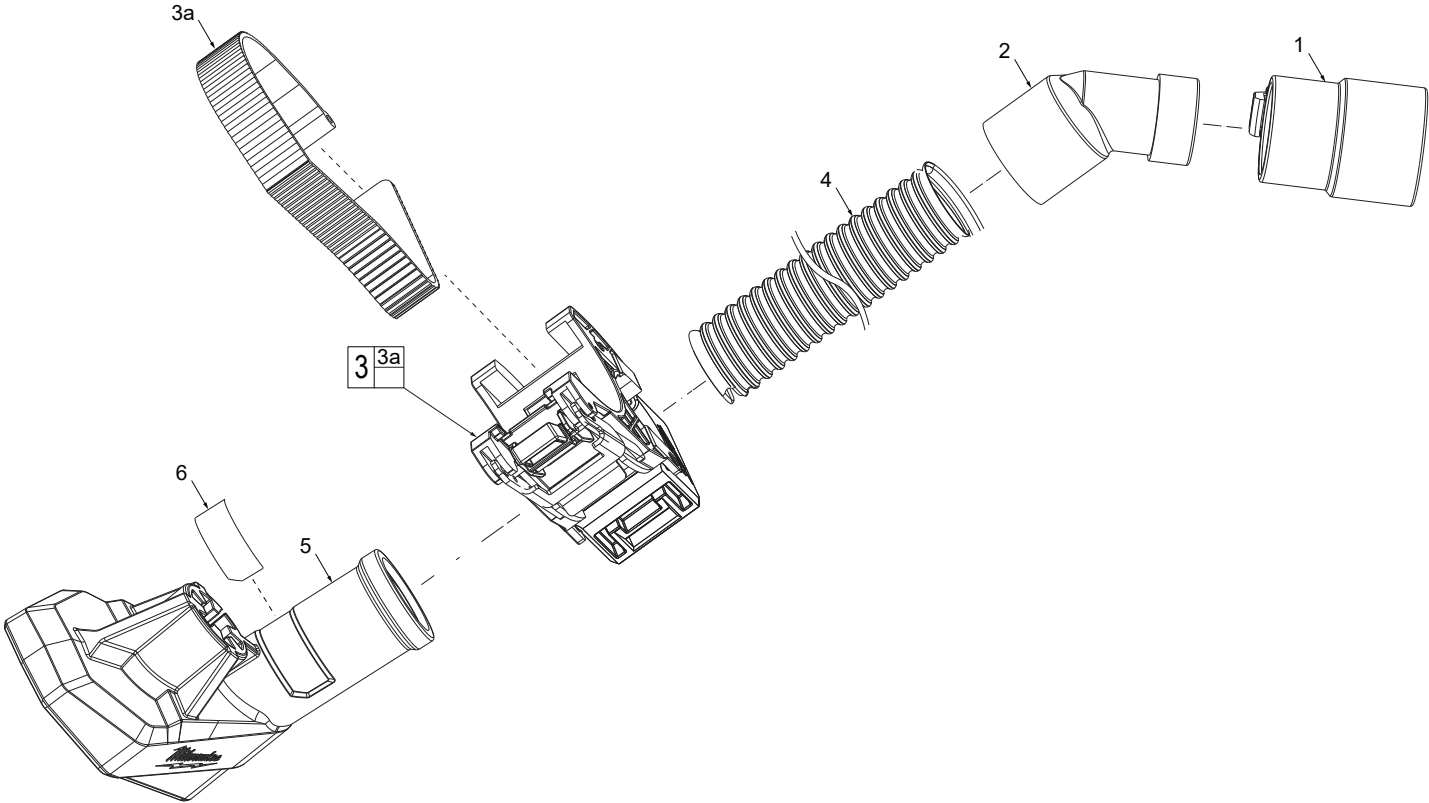


FIG.	PART NO.	DESCRIPTION OF PART	NO. REQ.
1	49-90-1959	Hose Clip Adaptor	(1)
2	42-86-0022	Hose Connector	(1)
3	14-04-0125	Bracket Sub Assembly	(1)
3a	42-70-0073	Belt	(1)
4	14-37-0135	Hose	(1)
5	31-55-0034	Chisel Boot	(1)
6	12-25-0315	Nameplate	(1)

FIG.	NOTES
6	A clean, dry surface is essential for proper performance for any adhesive system. The area intended for application of any adhesive label or nameplate must be prepared by cleaning with isopropyl alcohol. The solvent is to be applied with a clean, lint free applicator and the surface allowed to dry before applying the label or nameplate.

00 0

EXAMPLE:
Component Parts (Small #)
Are Included When Ordering
The Assembly (Large #).

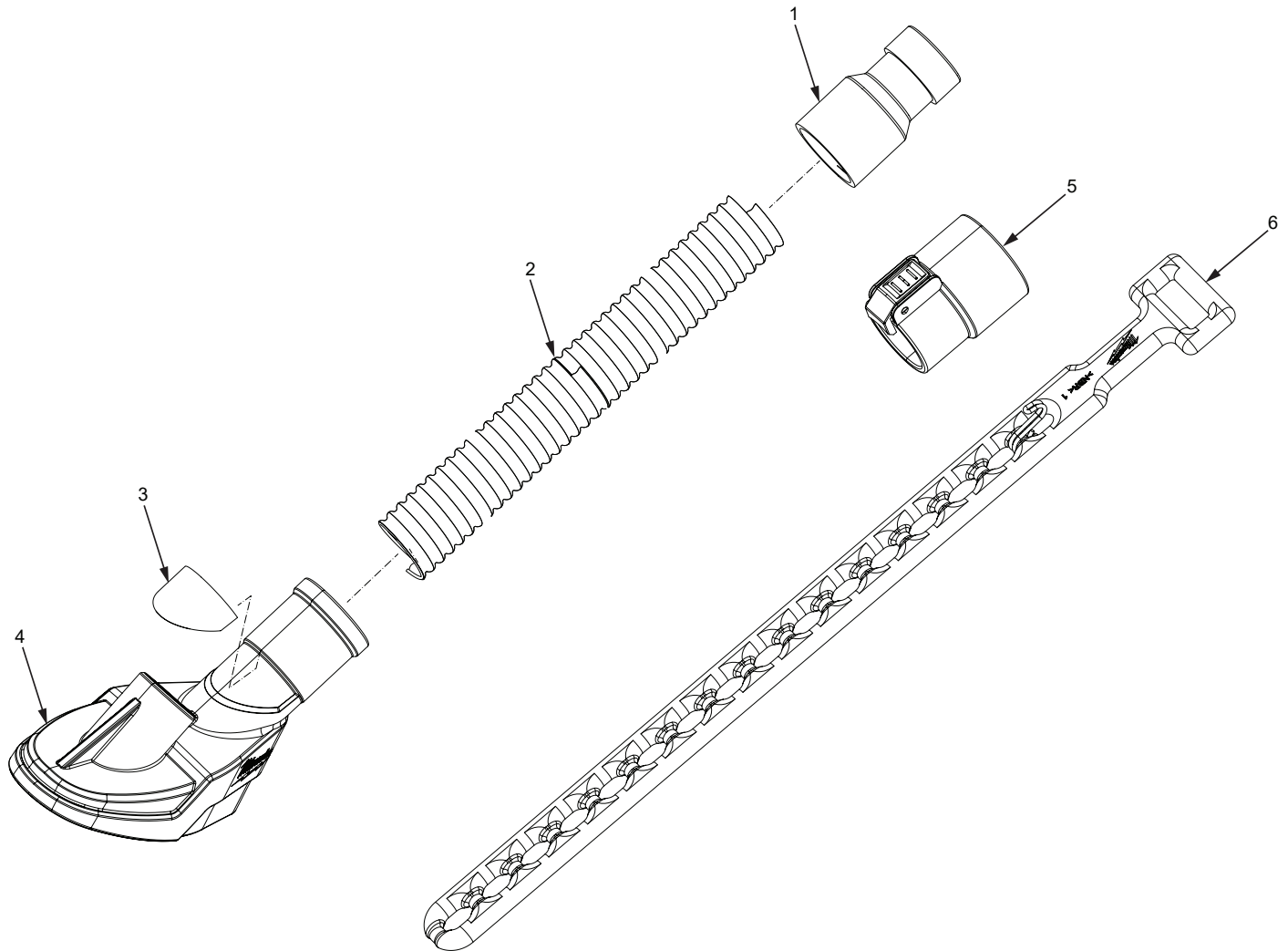


FIG.	PART NO.	DESCRIPTION OF PART	NO. REQ.
1	42-86-0035	Hose Connector	(1)
2	14-37-0135	Hose	(1)
3	12-25-0315	Nameplate	(1)
4	31-55-0055	Chisel Boot	(1)
5	49-90-1959	Hose Clip Adaptor	(1)
6	42-25-0035	Rubber Belt w/ Hook	(1)

FIG.	NOTES
3	A clean, dry surface is essential for proper performance for any adhesive system. The area intended for application of any adhesive label or nameplate must be prepared by cleaning with isopropyl alcohol. The solvent is to be applied with a clean, lint free applicator and the surface allowed to dry before applying the label or nameplate.