



HYBRIDFLUSH® TOP MOUNT

AUTOMATIC/MANUAL URINAL FLUSHOMETER

Model
AEF-801-CU-18

Description

Battery Powered, Sensor Operated HYBRIDFLUSH® Top Mount Exposed Urinal Flushometer for Wall Hung Top Spud Bowls.

Flush Cycle

Model AEF-801-CU-18 (0.125 gpf/0.5 Lpf)

Features

- Patented BRV® and Gear Motor Drive
- Hands Free Infrared Sensor Activation
- Vandal and Water Resistant Design
- Chrome Plated All Metal Housing
- Quiet Operation
- True Mechanical Flush Button (Side)
- *Mechanical Button Works When Batteries are Drained
- Operates on (4) "AA" Alkaline Batteries (Included)
- Battery Life - 3+ Years
- "Low Battery" Blinking LED Indicator
- Easy Battery Replacement-No Water Shut Off Necessary
- Adjustable Sensor Angle
- Adjustable Sensor Distance
- Optional Water Saver Mode
- Optional Three (3) Second Flush Delay Mode
- Optional 24-Hour Flush Mode
- Uses Proprietary Silicone Diaphragm with Filtered Bypass
- 3/4" I.P.S. Angle Stop
- Adjustable Tailpiece
- High Back Pressure Vacuum Breaker with Single Piece Hex Coupling Nut
- Spud Coupling and Flange for 3/4" Top Spud
- Sweat Solder Kit and Wall Flange with Set Screw
- High Efficiency For Water Conservation

Code Compliance (Listed By IAPMO)

- ASSE 1037-2015
- ASME A112.1035-2015
- CSA B125.37-15
- EPA WaterSense (When Used With a WaterSense Listed Bowl)



Accessories (Add suffix to model number for accessories)

- HC801 - Cover for Mechanical Flush Button

For Finish Variations Please Consult Factory



*AEF-801-CU units include a Valve Body, Supply Stop and Vacuum Breaker.



The HYBRIDFLUSH® Advantage

The **HYBRIDFLUSH®** is a revolutionary full-featured automatic/manual flushometer. The **HYBRIDFLUSH®** incorporates a unique patented mechanism that allows for automatic/manual operation for unsurpassed reliability. The patented **HYBRIDFLUSH®** design allows for the original flush handle or push button to be used as an alternate flush option that is independent of the battery power. The **HYBRIDFLUSH®** by Advanced Modern Technologies Corporation is the most efficient, economical, and complete automatic flush valve system on the market.

Warranty
5 Years



ADA Compliant

Architect/Engineer Approval

| | |
|----------------------|-------|
| Job Name | _____ |
| Date | _____ |
| Model Specified | _____ |
| Quantity | _____ |
| Variations Specified | _____ |
| Customer/Wholesaler | _____ |
| Contractor | _____ |
| Architect | _____ |

The information contained in this document is subject to change without notice.
Revision (07/16)



HYBRIDFLUSH® TOP MOUNT

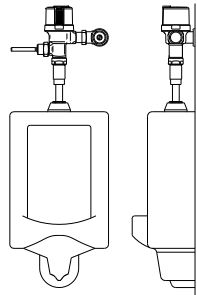
AUTOMATIC/MANUAL URINAL FLUSHOMETER

Model
AEF-801-CU-18

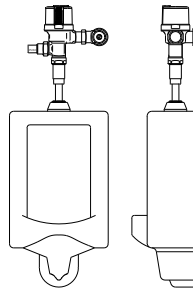
Specifications:

| | |
|----------------------------------|--|
| Operation: | Hybrid (Automatic/Manual) |
| Outer Casing: | Standard-Chrome Metal |
| Operating Water Pressure: | 15 PSI - 100 PSI |
| Sensor Type: | Infrared |
| Battery Type: | Four AA Alkaline Batteries |
| Battery Life: | 3+ Years |
| Arming Delay: | 5 Seconds |
| Sensing Range: | 18" (45cm) - 30" (75cm) Adjustable |
| Ghost Flush: | Once every 24 Hours From Last Flush |
| Sensor Angle: | Adjustable Angle |
| Flush Cycle: | Specified by Model |
| Model AEF-801-CU-18 | 0.125 gpf/0.5 Lpf |
| Flush Mode: | After Every Use |
| Water Saver Mode: | After Every Other Use |
| Manual Override: | Mechanical Flush Button or None |

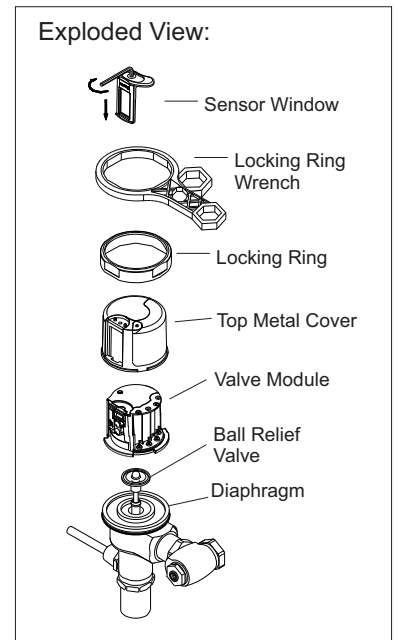
Application:



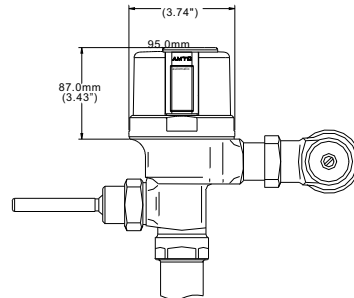
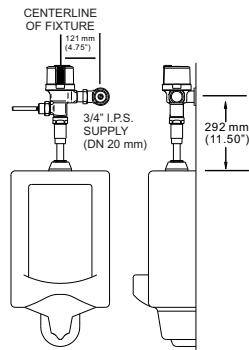
HYBRIDFLUSH® shown on urinal with manual flush handle.



HYBRIDFLUSH® shown on urinal with manual flush button.



Dimensions:



Advanced Modern Technologies Corporation • 19800 Nordhoff Place • Chatsworth, CA 91311
Tel: (818) 883-2682 • Toll Free: (800) 874-7822 • Fax: (818) 883-2620 • www.amtccorporation.com