

Job Name:

Schedule Reference:

Date:



### GENERAL FEATURES

- Dual set point functionality (\*1)
- Compact floor-mount
- Two-speed settings
- Controls can be wall-mounted or unit-mounted in a hidden case
- IT Terminal Plug

### OPTIONS

- External Heater Adapter..... PAC-YU25HT

**Note:** Mitsubishi Electric (MESCA) supports the use of only MESCA supplied and approved accessories for proper functioning of the unit(s). Use of non-MESCA supported accessories will affect warranty coverage.

Note:  
Ventilation air to be introduced independent of VRF indoor units.  
Please refer to local codes for the required ventilation rates specific to the application.  
\*1 – All components of the system must be compatible. For more details on system compatibility, please refer to Technical Bulletin 100-151 available on our website.

Notes:

### SPECIFICATIONS

#### Capacity\*

Cooling ..... 6,000 Btu/h  
Heating ..... 6,700 Btu/h

#### Power

Power Source ..... 208 / 230V, 1 phase, 60Hz

#### Power Consumption

Cooling (208/230V) ..... 0.051 / 0.061 kW

Heating (208/230V) ..... 0.051 / 0.061 kW

#### Current

Cooling (208/230V) ..... 0.25 / 0.27 A

Heating (208/230V) ..... 0.25 / 0.27 A

Minimum Circuit Ampacity (MCA \*) (208/230V) ... 0.32 / 0.34 A

Maximum Overcurrent Protection (MOCP) ..... 15 A

**\* All electrical work shall comply with National (CEC) and local codes and regulations.**

**External Finish** ..... Acrylic paint (5Y 8/1)

#### Dimensions

Inches ..... 24-13/16 h x 41-11/32 w x 8-11/16 d

mm ..... 630 h x 1050 w x 220 d

**Net Weight** ..... 51 lb / 23 kg

#### Fan

Type x Quantity ..... Sirocco fan x 1

Airflow Rate (Low - High) ..... 194 - 229 CFM

Motor Type ..... Single phase induction motor

**External Static Pressure**..... 0" WG

**Air Filter** ..... Standard

#### Refrigerant Pipe Dimensions (R410A)

Liquid ..... 1/4" / 6.35 mm flare

Gas ..... 1/2" / 12.7 mm flare

**Drainpipe Dimension** ..... O.D. 1-3/32" / 27 mm

**Sound Level (Low - High)** ..... 36 - 41 dB (A)

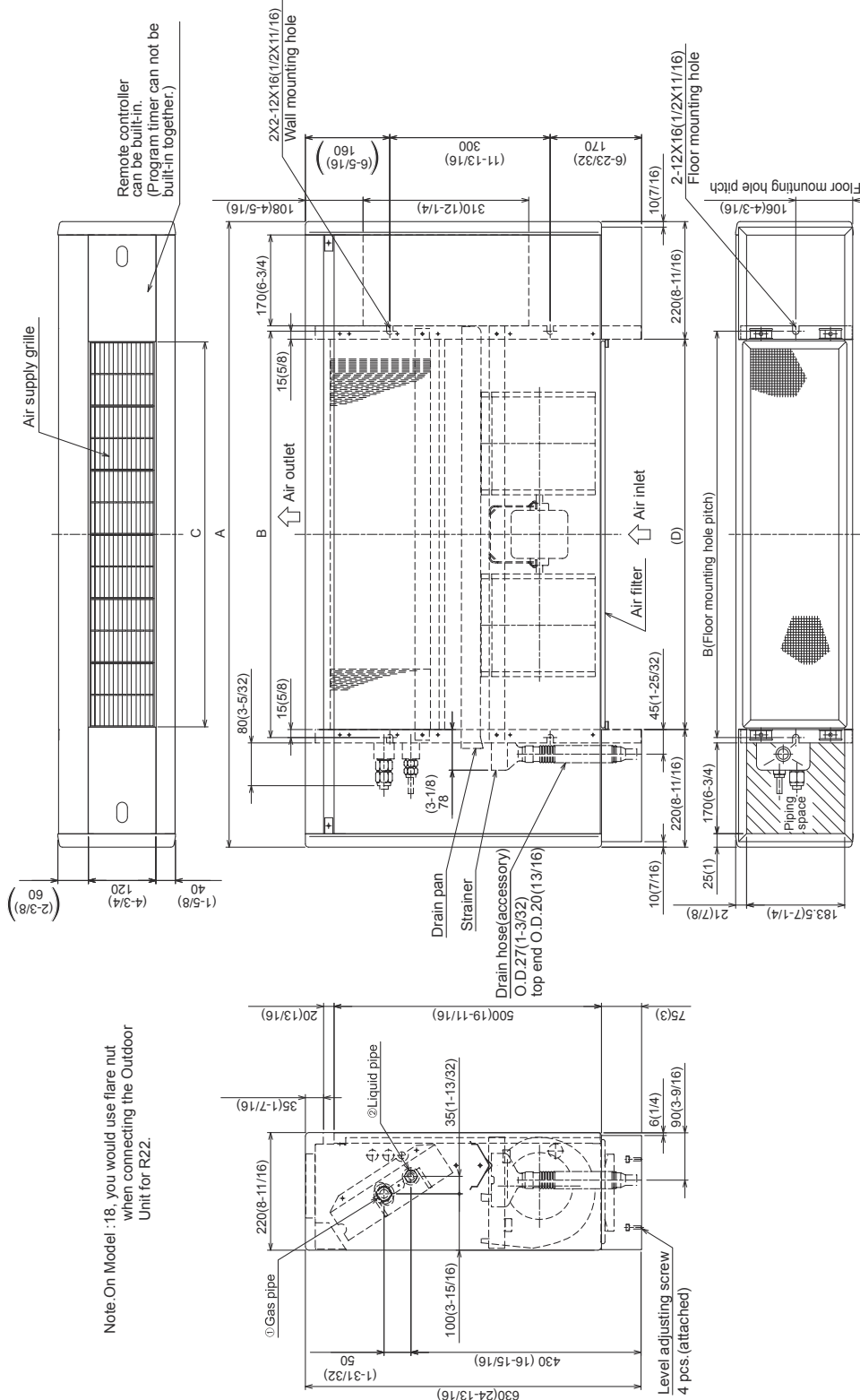
\* Cooling / Heating capacity indicated at the maximum value at operation under the following conditions:

Cooling | Indoor: 80° F (27° C) DB / 67° F (19° C) WB, Outdoor 95° F (35° C) DB

Heating | Indoor: 70° F (21° C) DB, Outdoor 47° F (8° C) DB / 43° F (6° C) WB

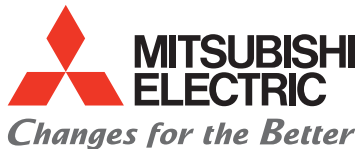
# Model: PFFY-P06NEMU-E – DIMENSIONS

Unit : mm(in)



Note: On Model :18, you would use flare nut when connecting the Outdoor Unit for R22.

Model	mm(in.)			
	A	B	C	D
PFFY-P06NEMU-E	1050(41-11/32)	640(25-7/32)	600(23-5/8)	610(24-1/16)
PFFY-P08NEMU-E	1050(41-11/32)	640(25-7/32)	600(23-5/8)	610(24-1/16)
PFFY-P12NEMU-E	1170(46-1/16)	760(29-15/16)	720(28-3/8)	730(28-3/4)
PFFY-P15NEMU-E	1170(46-1/16)	760(29-15/16)	720(28-3/8)	730(28-3/4)
PFFY-P18NEMU-E	1410(55-17/32)	1000(39-3/8)	960(37-13/16)	970(38-1/4)
PFFY-P24NEMU-E	1410(55-17/32)	1000(39-3/8)	960(37-13/16)	970(38-1/4)



for a greener tomorrow



Should this document be altered or changed without MESCA's permission, it becomes null and void. MESCA assumes no responsibility for any consequences in such cases.