

Job Name:

Schedule Reference:

Date:



### GENERAL FEATURES

- Dual set point functionality (\*1)
- Lightweight and compact design
- Four-speed fan settings
- Built-in condensate lift mechanism
- Ventilation air intake supported
- IT Terminal Plug

### OPTIONS

- External Heater Adapter..... PAC-YU25HT

### ACCESSORIES:

Grille.....(Required ordered separately) .... PMP-16BMUW

\* Cooling / Heating capacity indicated at the maximum value at operation under the following conditions:  
 Cooling | Indoor: 80° F (27° C) DB / 67° F (19° C) WB  
 Cooling | Outdoor: 95° F (35° C) DB  
 Heating | Indoor: 70° F (21° C) DB  
 Heating | Outdoor: 47° F (8° C) DB / 43° F (6° C) WB

**Note: Mitsubishi Electric (MESCA) supports the use of only MESCA supplied and approved accessories for proper functioning of the unit(s). Use of non-MESCA supported accessories will affect warranty coverage.**

Note:

Ventilation air to be introduced independent of or in series with VRF indoor units. Please refer to local codes for the required ventilation rates specific to the application.

\*1 – All components of the system must be compatible. For more details on system compatibility, please refer to Technical Bulletin 100-151 available on our website.

Notes:

### SPECIFICATIONS

#### Capacity\*

Cooling ..... 6,000 Btu/h  
 Heating ..... 6,700 Btu/h

#### Power

Power Source ..... 208 / 230V, 1 phase, 60Hz

#### Power Consumption

Cooling ..... 0.04 kW  
 Heating ..... 0.04 kW

#### Current

Cooling ..... 0.20 A  
 Heating ..... 0.20 A  
 Minimum Circuit Ampacity (MCA \*) ..... 0.25 A  
 Maximum Overcurrent Protection (MOCP) ..... 15 A

**\* All electrical work shall comply with National (CEC) and local codes and regulations.**

#### External Finish

.....Grille: 6.4Y 8.9/0.4

#### Dimensions

Inches ..... 9-1/16 h x 31-31/32 w x 15-9/16 d  
 mm ..... 230 h x 812 w x 395 d

#### Grille

Inches ..... 1-3/16" h x 39-3/8" w x 18-17/32" d  
 mm ..... 30 h x 1000 w x 470 d

#### Net Weight

Unit ..... 31 lb / 14 kg  
 Grille ..... 7 lb / 3 kg

#### Coil Type

.....Cross fin

#### Fan

Type x Quantity ..... Line flow fan x 1  
 Airflow Rate (Low-Mid1-Mid2-High) ..... 230-254-283-307 CFM  
 Motor Type ..... DC brushless motor

#### Air Filter

.....PP honeycomb

#### Refrigerant Pipe Dimensions (R410A)

Liquid ..... 1/4" / 6.35 mm flare  
 Gas ..... 1/2" / 12.7 mm flare

#### Drainpipe Dimension

.....O.D. 1" / 26 mm

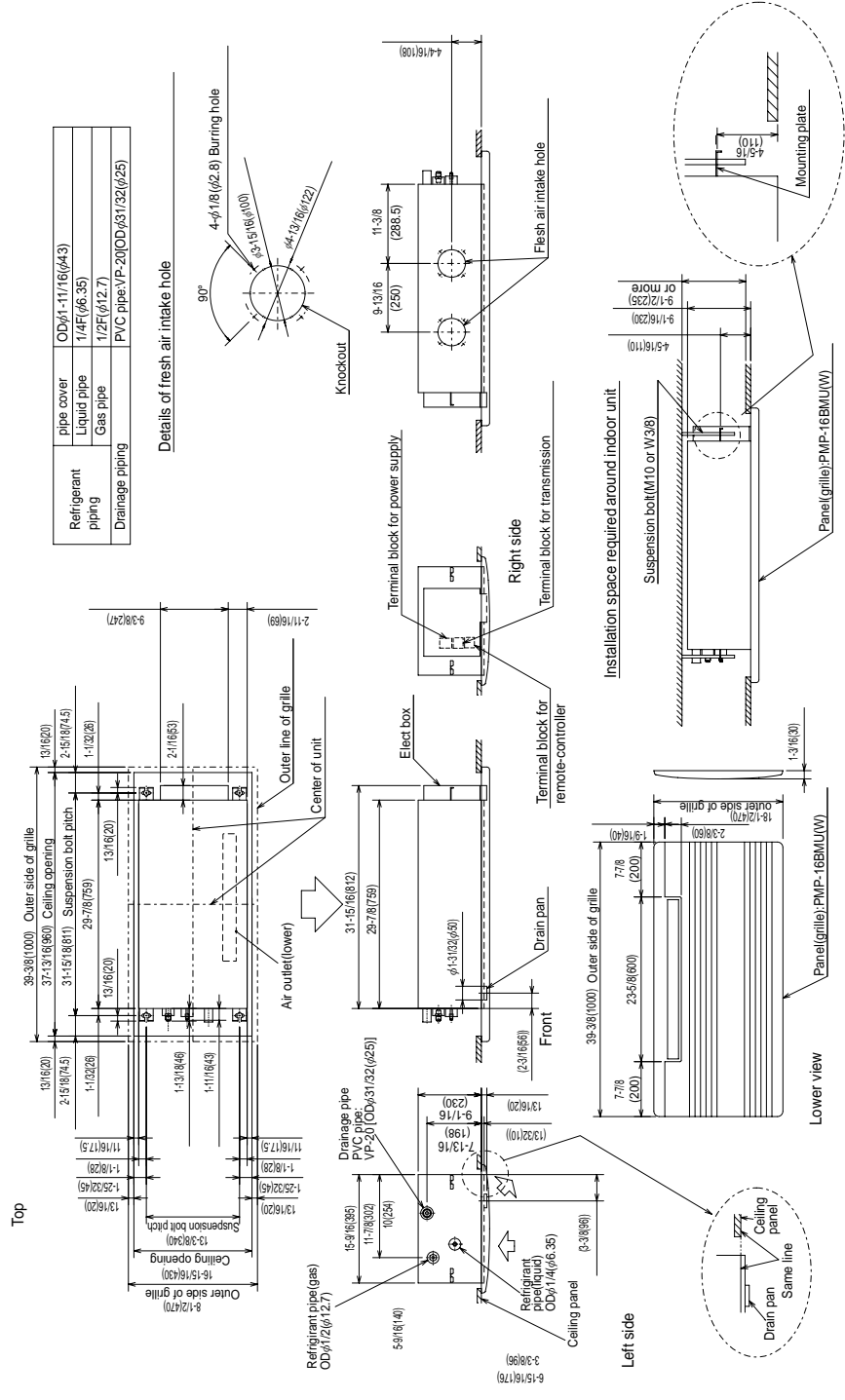
#### Sound Level

(Low - Mid1 - Mid2 - High) ..... 27 - 30 - 33 - 35 dB (A)

Should this document be altered or changed without MESCA's permission, it becomes null and void. MESCA assumes no responsibility for any consequences in such cases.

# Model: PMFY-P06NBMU-ER5 – DIMENSIONS

Refrigerant piping	ODxI-11/16(ø43)
Liquid pipe	1/4(F)(ø6.35)
Gas pipe	1/2(F)(ø12.7)
Drainage piping	PVC pipe VP-20(OD)(ø31/32)(ø25)



Should this document be altered or changed without MESCA's permission, it becomes null and void. MESCA assumes no responsibility for any consequences in such cases.

