

Job Name:

System Reference:

Date:

**SPECIFICATIONS****Capacity\***

Cooling	Btu/h	12,000
Heating	Btu/h	13,500

\* Cooling / Heating capacity indicated at the maximum value at operation under the following conditions:

Cooling | Indoor: 80° F (26.7° C) DB / 67° F (19° C) WB; Outdoor 95° F (35° C) DB  
Heating | Indoor: 70° F (21.1° C) DB; Outdoor 47° F (8.3° C) DB / 43° F (6° C) WB

**Electrical**

Electrical Power Requirements	1-phase, 208 / 230V, 60Hz	
Minimum Circuit Ampacity (MCA)	A	0.39
Recommended Fuse Size	A	15

**External Dimensions (H x W x D)**

Unit	In.(mm)	10-3/16 × 33-3/32 × 33-3/32 (258 × 840 × 840)
Grill (PLP-41EAEU)	In.(mm)	1-9/16 × 37-13/32 × 37-13/32 (40 × 950 × 950)

**Net Weight**

Unit	Lbs (kg)	46 (21)
Grill (PLP-41EAEU)	Lbs (kg)	11 (5)

**External Finish**

Unit	Galvanized steel sheet
Grill (PLP-41EAEU)	White - MUNSELL (6.4Y 8.9/0.4)

**Coil Type**

Cross fin

**Fan**

Type x Quantity	Turbo fan x 1	
Airflow Rate (Low-Mid2-Mid1-High)	CFM	494 - 530 - 565 - 600
Motor Type	DC motor	
Motor Output	kW	0.05
Motor F.L.A.	A	0.31

**Air Filter**PP honeycomb  
(long life filter, anti-bacterial type)**Refrigerant Piping Diameter**

Liquid (High Pressure)	In.(mm)	1/4 (6.35) Flare
Gas (Low Pressure)	In.(mm)	1/2 (12.7) Flare

**Field Drain Pipe Size**

In.(mm) O.D. 1-1/4 (32)

**Sound Pressure Level**

Low-Mid2-Mid1-High	dB(A)	27 - 29 - 30 - 31
--------------------	-------	-------------------

**GENERAL FEATURES**

- Square edge, sleek design
- 3D turbo fan enabling increased airflow
- Built-in 3D i-see Sensor®\*
- Improved installation features\*
- Occupancy detection\*
- Energy saving features\*
- Improved occupant comfort
- Four fan speed settings including auto-fan
- Corner pocket design for simplified installation
- Built-in condensate lift mechanism designed to provide up to 33-7/16" of lift
- Ventilation air intake supported

\*3D i-See sensor® settings requires either:

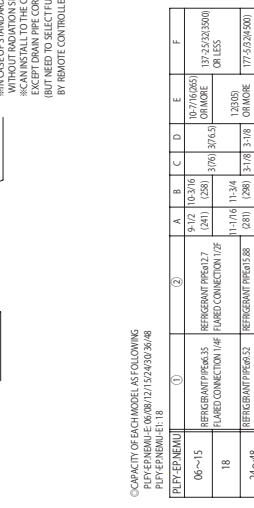
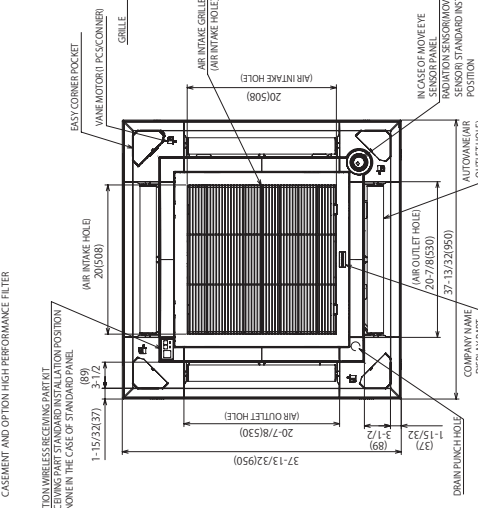
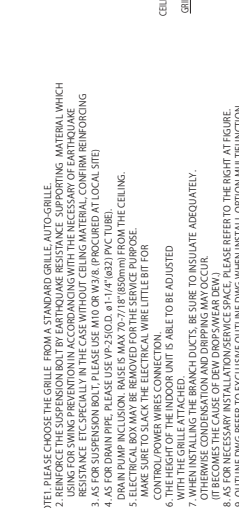
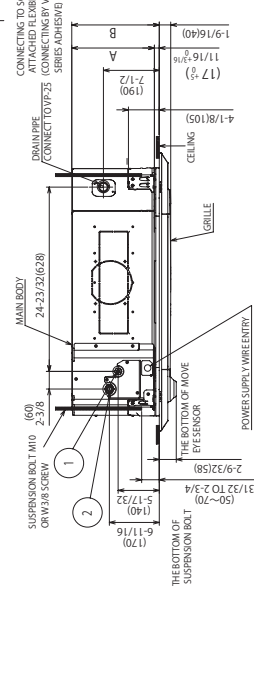
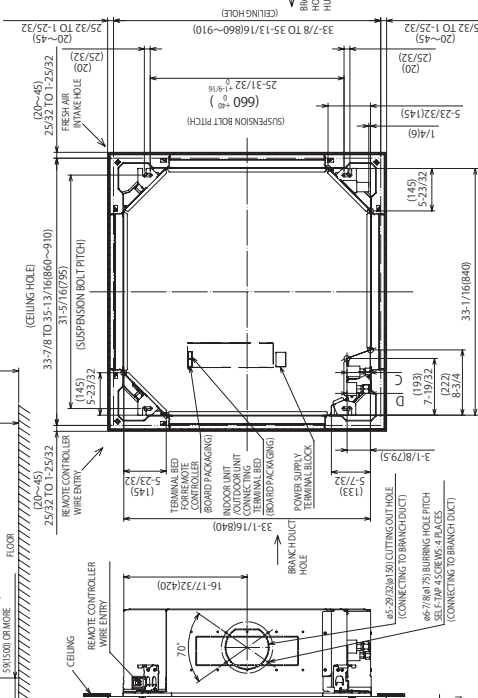
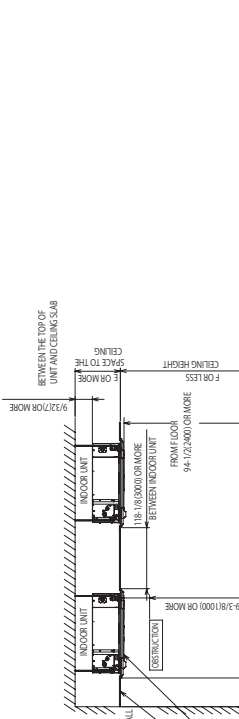
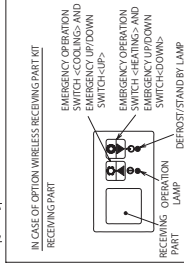
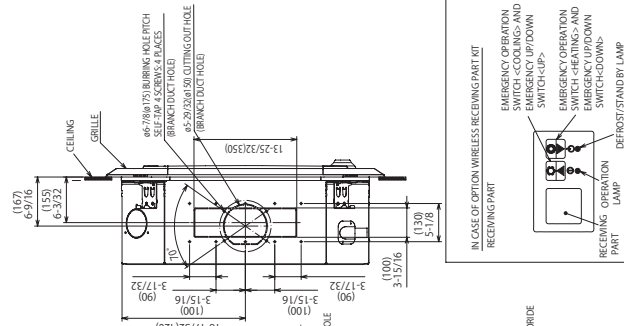
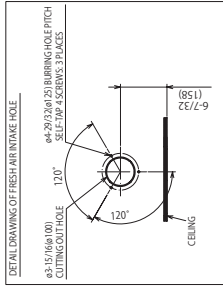
PAR-40MAAU or PAR-CT01MAU-SB controller

**ACCESSORIES**

- Air Outlet Shutter Plate (3 pieces) (PAC-SJ37SP-E)
- High Efficiency Filter (PAC-SH59KF-E)
- Multi Function Casement (PAC-SJ41TM-E)
- Wireless Signal Receiver (PAR-SR4LU-E)
- CN24 Relay Kit (CN24RELAY-KIT-CM3)
- Wireless Remote Controller (PAR-SL100A-E)
- MaxiBlue Advanced Blue Diamond Mini Condensate Pump w/ Reservoir & Sensor (208/230V) up to 48,000 BTU/H [recommended] (X87-721 - 208/230V)

# Model: PLFY-EP12NEMU-E – DIMENSIONS

Unit: in (mm)



- NOTE: PLEASE CHOOSE THE GRILLE FROM A STANDARD GRILLE AUTO-GRILLE.
- REINFORCE THE SUSPENSION BOLT BY EARTHQUAKE RESISTANCE SUPPORTING MATERIAL WHICH USING FOR SWING PREVENTION IN ACCORDING WITH THE NECESSARY OF EARTHQUAKE RESISTANCE.
  - PLEASE REFER TO THE DIMENSIONS OF THE NEIGHBORING ROOMS.
  - AS FOR SUSPENSION BOLT, PLEASE USE M10 OR M8 (PROVIDED AT LOCAL SITE).
  - AS FOR DRAIN PIPE, PLEASE USE VP-25(OD: 61.1/4 (3.3) PVC TUBE).
  - DRAIN PUMP INCLUSION: RAISE IS MAX 70-7/8" (850MM) FROM THE CEILING.
  - ELECTRICAL WIRING: BE SURE TO USE THE WIRE WITH THE RIGHT SIZE FOR THE SERVICE PURPOSE.
  - PLEASE REFER TO THE DIMENSIONS OF THE ROOMS FOR THE SERVICE PURPOSE.
  - CONTROL/POWER WIRES CONNECTION: BE SURE TO USE THE WIRE WITH THE RIGHT SIZE FOR THE SERVICE PURPOSE.
  - THE HEIGHT OF THE INDOOR UNIT IS ABLE TO BE ADJUSTED.
  - GRILLE: BE SURE TO USE THE GRILLE WITH THE RIGHT SIZE FOR THE SERVICE PURPOSE.
  - WHEN USING THE BRANCH DUCTS, BE SURE TO INSULATE ADEQUATELY.
  - OTHERWISE, CONDENSATION AND DRIPPING MAY OCCUR.
  - IF IT BECOMES THE CAUSE OF REW DRIP(SWEAT BEW), PLEASE REFER TO THE FIGURE 18.
  - OUTLINE DIMS REFER TO EXCLUSIVE OUTLINE DIMS WHEN INSTALL OPTION MULTIFUNCTION CASEMENT AND OPTION HIGH PERFORMANCE FILTER.

OPTION WIRELESS RECEIVING PART RECEIVING PART STANDARD INSTALLATION POSITION  
#NONE IN THE CASE OF STANDARD PANEL

COMPANY NAME DISPLAY PART

IN CASE OF MOVE EYE SENSOR PANEL, PLEASE REFER TO THE DIMENSIONS OF THE SENSOR STANDARD INSTALLATION POSITION

#IN CASE OF STANDARD PANEL WITHOUT ILLUMINATION SENSOR OR EXCEPT DRAIN PIPE CORNER (BUT NEED TO SELECT FUNCTION BY REMOTE CONTROLLER)

©CAPACITY OF EACH MODEL AS FOLLOWING  
PLFYEP12NEMU-E 06/08/12/15/24/30/36/48  
PLFYEP12NEMU-E1 18

	①	②	A	B	C	D	E	F
06~15	REFRIGERANT PIPES 3/8" FLARED CONNECTION 1/2"	9-1/2 (241)	120-3/16 (3045)	120-3/16 (3045)	120-3/16 (3045)	120-3/16 (3045)	120-3/16 (3045)	120-3/16 (3045)
18	REFRIGERANT PIPES 3/8" FLARED CONNECTION 1/2"	11-1/4 (289)	120-3/16 (3045)	120-3/16 (3045)	120-3/16 (3045)	120-3/16 (3045)	120-3/16 (3045)	120-3/16 (3045)
24~48	REFRIGERANT PIPES 3/8" FLARED CONNECTION 1/2"	11-1/4 (289)	120-3/16 (3045)	120-3/16 (3045)	120-3/16 (3045)	120-3/16 (3045)	120-3/16 (3045)	120-3/16 (3045)

