

Job Name:

System Reference:

Date:



**GENERAL FEATURES**

- Dual set point functionality
- Lightweight and compact design
- Four-speed fan settings
- Built-in condensate lift mechanism
- Ventilation air intake supported

**OPTIONS**

- CN24 Relay Kit.....CN24RELAY-KIT-CM3

\* Cooling / Heating capacity indicated at the maximum value at operation under the following conditions:  
 Cooling | Indoor: 80° F (27° C) DB / 67° F (19° C) WB  
 Cooling | Outdoor: 95° F (35° C) DB  
 Heating | Indoor: 70° F (21° C) DB  
 Heating | Outdoor: 47° F (8° C) DB / 43° F (6° C) WB

**SPECIFICATIONS**

**Capacity\***

Cooling .....15,000 Btu/h  
 Heating .....17,000 Btu/h

**Power**

Power Source .....208 / 230V, 1 phase, 60Hz

**Power Consumption**

Cooling ..... 0.05 kW  
 Heating ..... 0.05 kW

**Current**

Cooling ..... 0.26 A  
 Heating ..... 0.26 A

Minimum Circuit Ampacity (MCA) .....0.33 A  
 Maximum Overcurrent Protection (MOCP) .....15 A

**External Finish** .....Grille: 6.4Y 8.9/0.4

**Dimensions**

Inches .....9-1/16" h x 31-31/32" w x 15-9/16" d  
 mm .....230 h x 812 w x 395 d

**Grille**

Inches .....1-3/16" h x 39-3/8" w x 18-17/32" d  
 mm .....30 h x 1000 w x 470 d

**Net Weight**

Unit .....31 lb / 14 kg  
 Grille .....7 lb / 3 kg

**Coil Type** .....Cross fin

**Fan**

Type x Quantity .....Line flow fan x 1  
 Airflow Rate (Low-Mid1-Mid2-High) .. 272 -307 -343 -378 CFM  
 Motor Type .....DC brushless motor

**Air Filter** .....PP honeycomb

**Refrigerant Pipe Dimensions**

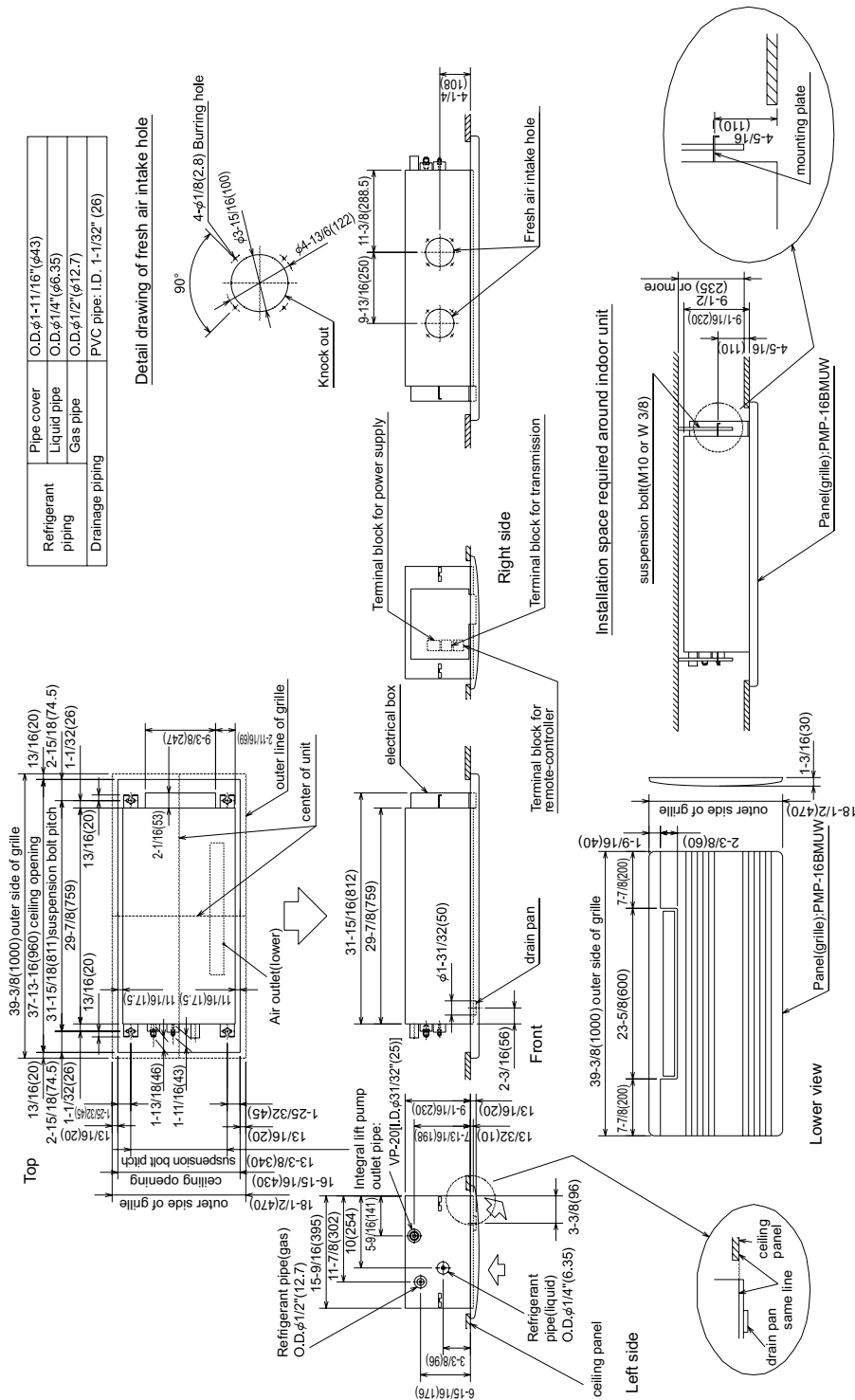
Liquid .....1/4" / 6.35 mm flare  
 Gas .....1/2" / 12.7 mm flare

**Drainpipe Dimension** .....O.D. 1" / 26 mm

**Sound Level** (Low-Mid1-Mid2-High) ..... 33 -35 -37 -39 dB (A)

# Model: PMFY-P15NBMU-ER5 – DIMENSIONS

Unit : in(mm)



1340 Satellite Boulevard, Suwanee, GA 30024  
Toll Free: 800-433-4822 www.mehvac.com

