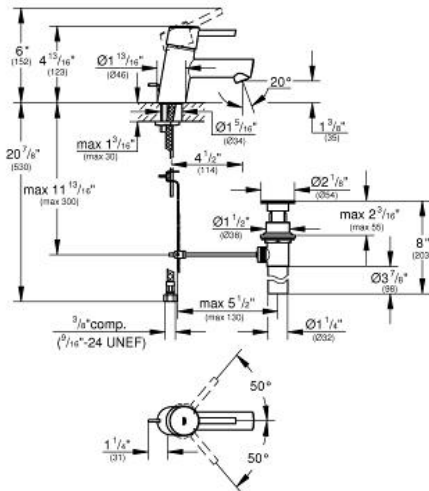


CONCETTO
Single Lever Faucet XS size
MODEL # 34702EN1

Pure Freude an Wasser



GROHE America, Inc | 200 North Gary Avenue, Suite G, Roselle, IL 60172
Phone: +1 (800) 444-7643 | Fax: +1 (800) 225-2778 | us-customerservice@grohe.com



ADA

Product Description:
Single Lever Faucet XS size

Standard Specification:

- GROHE SilkMove 28 mm ceramic cartridge
- With adjustable hot limit safety stop
- GROHE StarLight finish
- GROHE EcoJoy technology for less water and perfect flow
- GROHE QuickFix installation system
- Metal lever handle
- Metal pop-up drain
- Extra long flex lines with flat seal
- Faucet height below 6" when in use
- Solid brass body
- Max flow rate: 1.2 gpm (4.56 L/min)
- ADA Compliant

Applicable Codes & Standards:

- EPA WaterSense®
- CalGreen

Color:

- 34702EN1 EN1 brushed nickel

