



Mueller Streamline Co. Headquarters

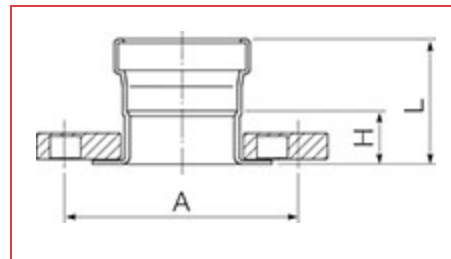
150 Schilling Blvd
Suite 201
Collierville, Tennessee 38017
United States
Phone: 901 753 3200

Mueller Streamline Co. International

525 Okeechobee Blvd
Suite 860
West Palm Beach, FL 33401
United States
Phone: 561 273 8300

ITEM # PF 01940, COPPER ADAPTER FLANGE, 8 BOLT, P, 4"

Streamline® PRS™ Copper-Press Fittings is a flameless joining alternative for plumbing or mechanical applications. Available sizes ranging from 1/2" to 4" in diameter.



[Specifications](#) | [Dimensions](#) | [Details](#)

Specifications

Weight	11.18 lb
Material	COPPER
Operating Temperature [Min]	-20 °F
Operating Temperature [Max]	250 °F
Operating Pressure [Max]	200 psi
End Type	Press

End Size	4 in
Second End Type	Flange
Second End Size	4-7.283 in
Standards	ASME B16.51 IAPMO PS-117 NSF/ANSI 61 NSF/ANSI 372 CSA TIL-MSE-13

Dimensions

Overall Length	8.86 in
Overall Height	3.68 in
Overall Width	8.86 in
A	7.28 in
H	1.51 in
L	3.68 in

Details

Qty Pcs / Bag	1
Master Qty Pcs / Box	3
Mueller Description	4 P X FLANGE ADAPTER