

CHICAGO FAUCETS
a Geberit company

2100 South Clearwater Drive
Des Plaines, IL 60018
Phone: 847-803-5000
Fax: 847-803-5454
www.chicagofaucets.com

REPAIR PARTS

BY: JAR DATE: 05-19-15

CHK: *JAR* REV: 08-16-16

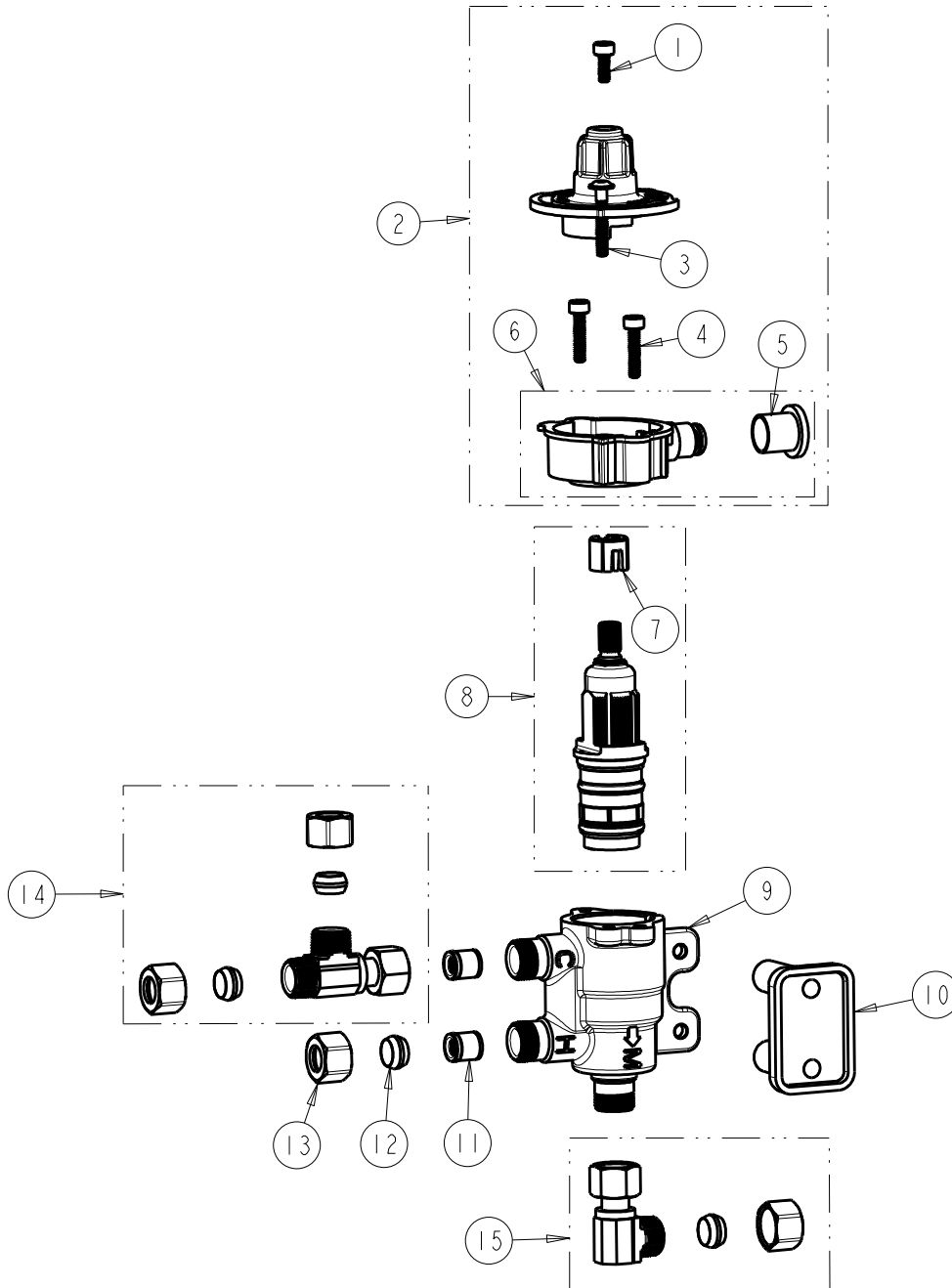
FITTING NO.

131-CFMABRCF

SUBMITTED MODEL NO.

ITEM NO.

FOR TECHNICAL ASSISTANCE
1-800-TEC-TRUE (1-800-832-8783)



ITEM	PART NO.	DESCRIPTION	ITEM	PART NO.	DESCRIPTION
1	-----	HEX SCREW, M4x0.7x10mm	9	-----	VALVE BODY
2	131-002KJKNF	KIT, TEMPERATURE CONTROL	10	-----	SPACER
3	-----	BONNET HEX SCREW, M4X0.7X30mm	11	550-009JKABNF	CHECK CARTRIDGE ASSEMBLY
4	-----	BONNET HEX SCREW, M4x0.7x16mm	12	-----	FERRULE, 3/8 TUBE
5	131-003JKNF	SAFETY CAP, FLUSH MODE	13	-----	COMPRESSION NUT, 3/8 TUBE
6	131-005KJKNF	KIT, BONNET FLUSH MODE	14	131-006KJKRCF	T BYPASS CONNECTOR, 3/8 COMP
7	-----	KNOB LOCATOR	15	131-007KJKRCF	L BYPASS CONNECTOR, 3/8 COMP
8	131-XFMJKNF	KIT, CARTRIDGE & KNOB LOCATOR			