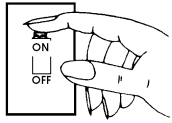


# INSTALLATION INSTRUCTIONS

READ IMPORTANT SAFETY TIPS BEFORE PROCEEDING WITH INSTALLATION

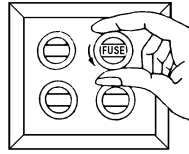
## SAFETY TIPS



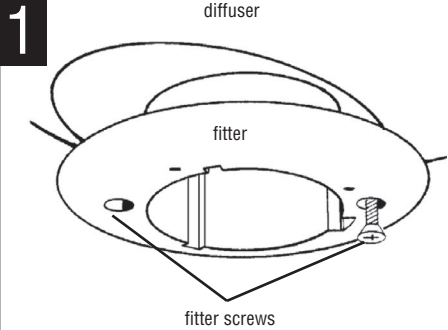
Turn fixture off! (Place wall switch in off position, if fixture has built-in switch or chain pull, switch or pull chain so fixture is off.)



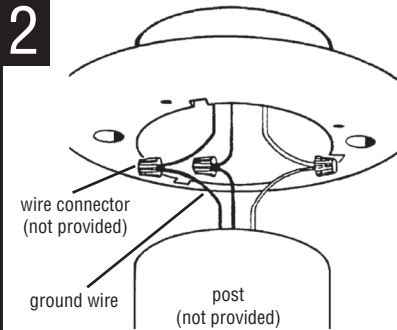
Next - go to the main fuse box. If your fuse box has an ON/OFF switch, simply place main power switch in OFF position.



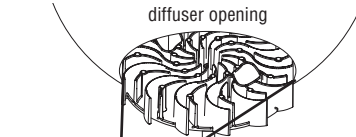
Screw-in type fuses - unscrew the fuse or fuses that control the power to the fixture or room you are working in.



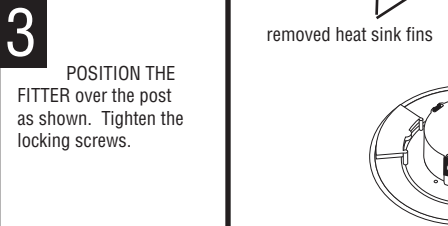
Remove diffuser. Loosen fitter screws. Slide fitter to the side of diffuser and lift out. Lower fitter assembly to the bottom of diffuser. Position heat sink as shown and remove fitter assembly.



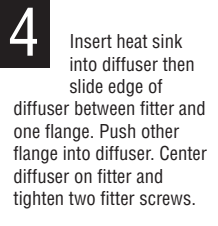
**NOTE:** Some models require careful alignment of heat sink in order to remove/replace diffuser. For these models diffuser must be tilted so that diffuser opening slides over heat sink where heat sink fins have been removed.



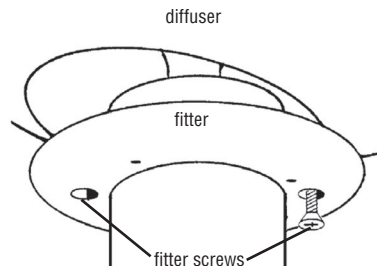
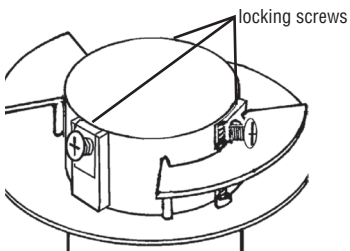
**ATTACH BLACK FITTER WIRE** to the black supply wire, white fitter wire to the white supply. Use wire connectors (not provided). Connect bare fitter ground wire to the ground wire from the power supply.



**3** POSITION THE FITTER over the post as shown. Tighten the locking screws.



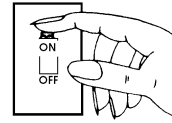
**4** Insert heat sink into diffuser then slide edge of diffuser between fitter and one flange. Push other flange into diffuser. Center diffuser on fitter and tighten two fitter screws.



# INSTALLATION INSTRUCTIONS

READ IMPORTANT SAFETY TIPS BEFORE PROCEEDING WITH INSTALLATION

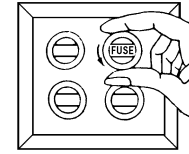
## SAFETY TIPS



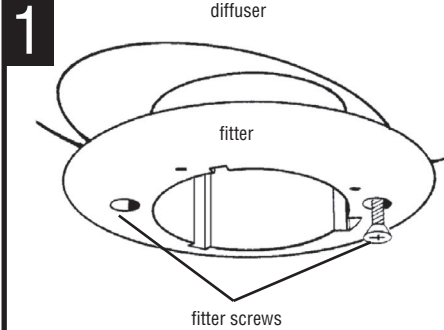
Turn fixture off! (Place wall switch in off position, if fixture has built-in switch or chain pull, switch or pull chain so fixture is off.)



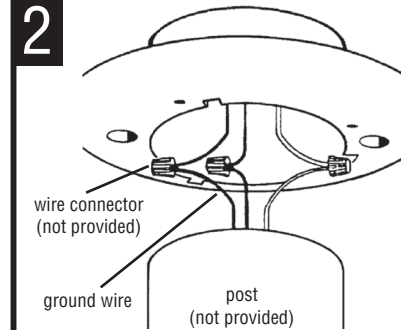
Next - go to the main fuse box. If your fuse box has an ON/OFF switch, simply place main power switch in OFF position.



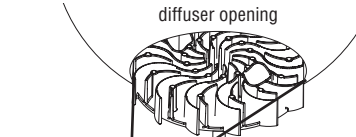
Screw-in type fuses - unscrew the fuse or fuses that control the power to the fixture or room you are working in.



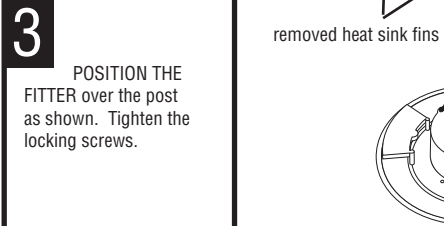
Remove diffuser. Loosen fitter screws. Slide fitter to the side of diffuser and lift out. Lower fitter assembly to the bottom of diffuser. Position heat sink as shown and remove fitter assembly.



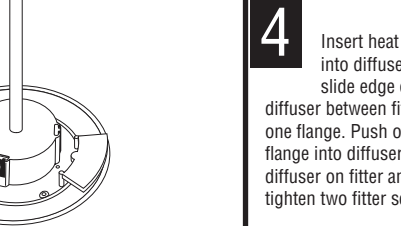
**NOTE:** Some models require careful alignment of heat sink in order to remove/replace diffuser. For these models diffuser must be tilted so that diffuser opening slides over heat sink where heat sink fins have been removed.



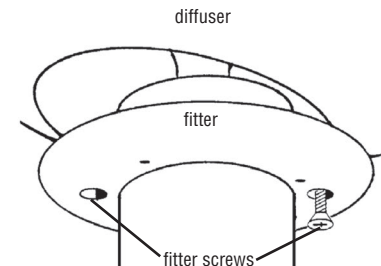
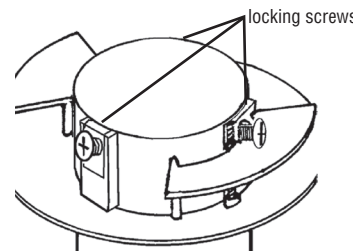
**ATTACH BLACK FITTER WIRE** to the black supply wire, white fitter wire to the white supply. Use wire connectors (not provided). Connect bare fitter ground wire to the ground wire from the power supply.



**3** POSITION THE FITTER over the post as shown. Tighten the locking screws.



**4** Insert heat sink into diffuser then slide edge of diffuser between fitter and one flange. Push other flange into diffuser. Center diffuser on fitter and tighten two fitter screws.





Clean only with mild soap and water. Avoid spraying with  
Cleansers, Insecticides, and Pesticides that a petroleum based  
hydrocarbon products. These will degrade Luminaire.

**CAUTION:** Do not turn on without diffuser  
installed. Do not touch LEDs or circuit board.  
LED optics could be damaged. Do not remove  
protective cover from light engine.

**FIVE YEAR (60 MONTH) LIMITED WARRANTY**

Inter-Global warrants this lighting fixture to be free from defects in material and workmanship for a period of five (5) years from the date of purchase and agrees, at its option, to repair or replace any defective product without charge. **IMPORTANT: THIS WARRANTY DOES NOT COVER ANY DAMAGE RESULTING FROM ACCIDENT, MISUSE OR ABUSE, ABNORMAL USAGE, FAULTY INSTALLATION, NON-RESIDENTIAL USE, NEGLIGENCE, DAMAGE IN TRANSIT, OR REPAIR OR ALTERATIONS TO THE PRODUCT, IMPROPER MAINTENANCE, OR ANY CAUSE, OTHER THAN OUR DEFECTIVE MATERIAL OR WORKMANSHIP.**

For warranty service, call Inter-Global at 800-325-7364 to request RGA.

NOTE: Inter-Global shall not be liable for any special, incidental, or consequential damages arising out of or in connection with the use, manufacture, design, sale, or performance of its products.

No other warranties, express or implied, written or oral are authorized by Inter-Global. **ALL IMPLIED WARRANTIES, INCLUDING THE WARRANTIES OF MERCHANTABILITY AND FITNESS FOR A PARTICULAR PURPOSE SHALL BE LIMITED IN DURATION FOR A PERIOD OF 60 MONTHS FROM THE ORIGINAL DATE OF PURCHASE.** Seller shall in no event be liable for any breach of warranty in an amount that exceeds the price of the specific product.

This warranty gives you specific legal rights. You may also have other rights which vary from state to state. Some states do not allow the exclusion or limitation of incidental or consequential damages or the limitation on the duration of how long an implied warranty lasts, so the above exclusions and limitations may not apply to you.

Inter-Global takes pride in this production and we hope that it brings you many years of enjoyment. If you have comments, please call 800-325-7364.



Clean only with mild soap and water. Avoid spraying with  
Cleansers, Insecticides, and Pesticides that a petroleum based  
hydrocarbon products. These will degrade Luminaire.

**CAUTION:** Do not turn on without diffuser  
installed. Do not touch LEDs or circuit board.  
LED optics could be damaged. Do not remove  
protective cover from light engine.

**FIVE YEAR (60 MONTH) LIMITED WARRANTY**

Inter-Global warrants this lighting fixture to be free from defects in material and workmanship for a period of five (5) years from the date of purchase and agrees, at its option, to repair or replace any defective product without charge. **IMPORTANT: THIS WARRANTY DOES NOT COVER ANY DAMAGE RESULTING FROM ACCIDENT, MISUSE OR ABUSE, ABNORMAL USAGE, FAULTY INSTALLATION, NON-RESIDENTIAL USE, NEGLIGENCE, DAMAGE IN TRANSIT, OR REPAIR OR ALTERATIONS TO THE PRODUCT, IMPROPER MAINTENANCE, OR ANY CAUSE, OTHER THAN OUR DEFECTIVE MATERIAL OR WORKMANSHIP.**

For warranty service, call Inter-Global at 800-325-7364 to request RGA.

NOTE: Inter-Global shall not be liable for any special, incidental, or consequential damages arising out of or in connection with the use, manufacture, design, sale, or performance of its products.

No other warranties, express or implied, written or oral are authorized by Inter-Global. **ALL IMPLIED WARRANTIES, INCLUDING THE WARRANTIES OF MERCHANTABILITY AND FITNESS FOR A PARTICULAR PURPOSE SHALL BE LIMITED IN DURATION FOR A PERIOD OF 60 MONTHS FROM THE ORIGINAL DATE OF PURCHASE.** Seller shall in no event be liable for any breach of warranty in an amount that exceeds the price of the specific product.

This warranty gives you specific legal rights. You may also have other rights which vary from state to state. Some states do not allow the exclusion or limitation of incidental or consequential damages or the limitation on the duration of how long an implied warranty lasts, so the above exclusions and limitations may not apply to you.

Inter-Global takes pride in this production and we hope that it brings you many years of enjoyment. If you have comments, please call 800-325-7364.