

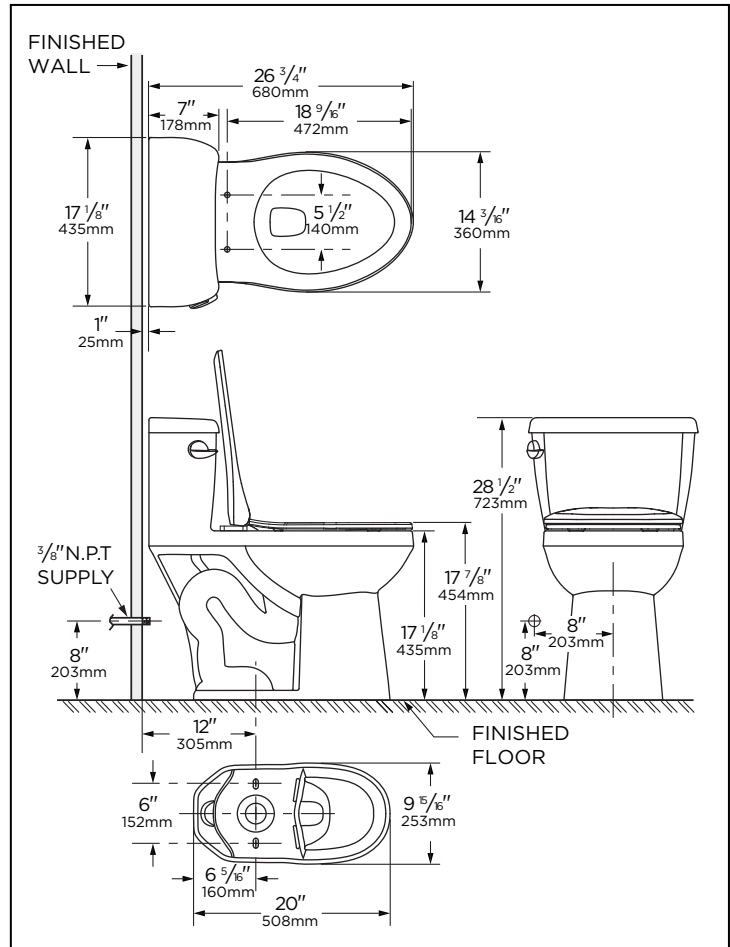
**Features:**  
**G0021014**

- Vitreous China
- 12" Rough-In
- 3" flush valve for maximum water force
- Fluidmaster® 400A Fill Valve
- Extra-Large Dual fed siphon jets for high power bowl clearing
- 100% glazed, 2" large trapway for clog-free waste removal
- Color matched metal tank lever
- G0099213 toilet seat included



**Technical Information:**

Configuration	One-Piece Compact Elongated
Water per Flush	1.28 gpf (4.8 Lpf)
Rough-In	12"
Height	28 1/2"
Width	17 1/8"
Depth	26 3/4"
Trapway	2"
Large Water Surface	8 11/16" x 6 5/16"
Shipping weight	87.7 lbs



**Accessories:**

N/A

**Other Tank Options:** (To be purchased separately)

N/A

**Available Colors:**

- White
- Other: Refer to Price Book for additional colors/finishes

**Warranty:**

- Limited Lifetime on Vitreous China, refer to the website for more details.



HIGH EFFICIENCY TOILET

**HET**



**NOTES:** All dimensions are in inches and millimeters. Illustrations may not be drawn to scale.

**IMPORTANT:**

Dimensions of fixtures are nominal and may vary within the range of tolerances established by ASME standard A 112.19.2 THIS FIXTURE QUALIFIES ACCORDING TO ASME TEST PROCEDURES AS A HIGH EFFICIENCY WATER CLOSET WITH AN AVERAGE CONSUMPTION OF 1.28 gpf (4.8 Lpf) OR LESS.