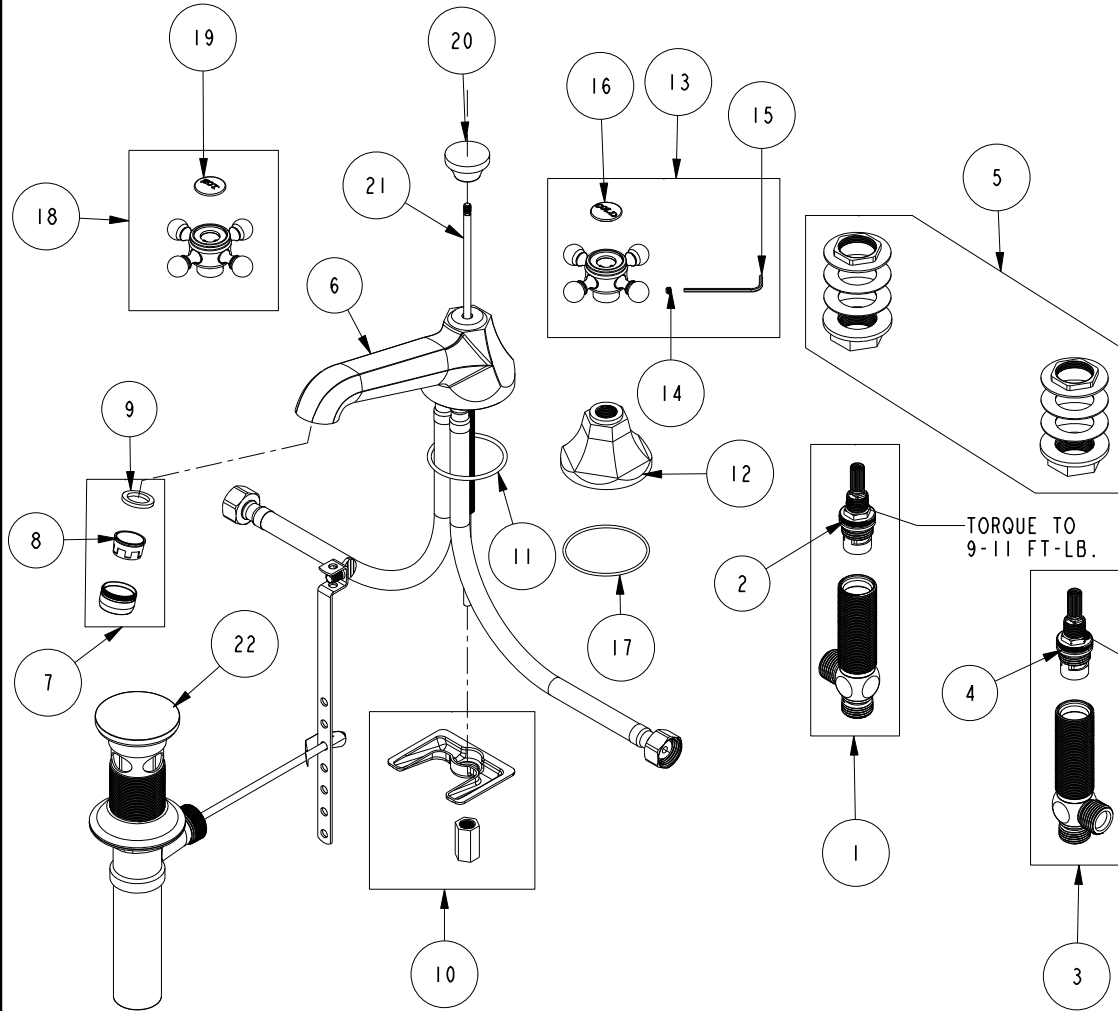


REPLACEMENT PARTS



ITEM	PT/ASSY	SPECIFY FINISH	DESCRIPTION
1	1-527		W/S CART/BODY ASM (HOT)
2	1-002		W/S CARTRIDGE - HOT
3	1-526		W/S CART/BODY ASM (COLD)
4	1-001		W/S CARTRIDGE - COLD
5	1-027		WIDE SPREAD MOUNTING HARDWARE
6	3-346	YES	ASSY, SPOUT
7	2-627	YES	AERATOR ASM
8	12404		AERATOR INSERT, STD SIZE, 1.2 GPM
9	91014		WSHR, .59 ID X .84 OD X .095 THK, FLT, RUBBER NSF 61
10	1-514		SPOUT MOUNTING KIT ASM
11	91756		O-RING #2-134, EP, 50 DURO - GREY
12	10960	YES	HEX ESCUTCHEON
13	2-142	YES	HANDLE ONLY, COLD
14	92000		SCREW 8 - 32 X 1/8 SS
15	10192		HEX KEY TOOL, #8 5/64
16	1-107		COLD BUTTON ASSEMBLY W/ ADHESIVE
17	91754		O-RING, #2-034, EPDM, 50 DURO - GREY
18	2-141	YES	HANDLE ONLY, HOT
19	1-108		HOT BUTTON ASSEMBLY W/ ADHESIVE
20	10961	YES	SMOOTH POP - UP KNOB
21	10288	YES	3/16" POP UP ROD
22	325	YES	POP UP ASSEMBLY

**WIDESPREAD FAUCET
1220**

REV D EN-4728 11/06/23 APPROVED RS

NEWPORT BRASS.

t: 949.417.5207 | www.newportbrass.com