

4

3

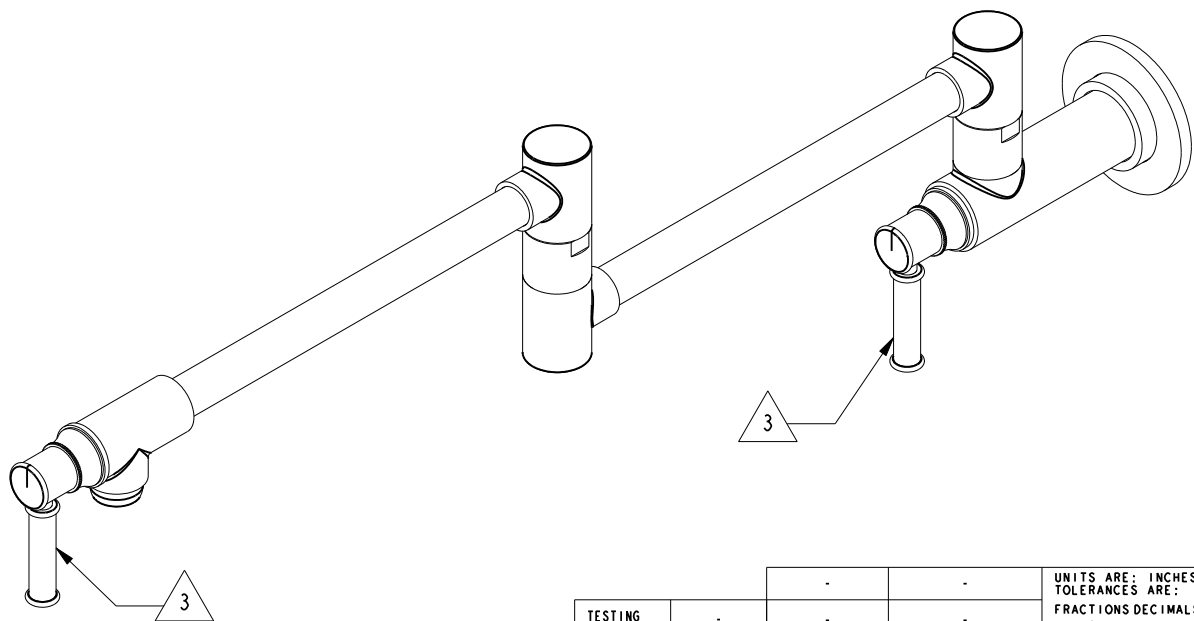
2

NOTES:

- (N1) 1. FIT / FORM / FUNCTION SHALL FOLLOW PS-E.008.
- 2. PACK THESE ITEMS IN A PLASTIC BAG.
- 3. HANDLE IN CLOSE POSITION.
- 4. INSTALLATION TORQUE 11-14 LB-FT.
- 5. INSTALLATION TORQUE 4-6 LB-FT.
- 6. APPLY LOCTITE 680.
- 7. APPLY LOCTITE 242
- 8. APPLY LOCTITE 242 ONLY AFTER ADJUSTING HANDLES IN THEIR OPTIMAL POSITION.

BILL OF MATERIAL (CURRENT LEVEL)

ITEM	PT/ASSY	DESCRIPTION	TYPE	QTY.
1	11330	VALVE BODY, WALL-END	PART	1
2	11309	FLANGE, MOUNTING	PART	1
3	92231	SCRW, 1/4-20 X 1/4 SKT HD CUP PT SS	PART	1
4	92223	SCRW, #8 X 2-1/2 PHL FLT HD SS	PART	4
5	2-556	FLANGE ASM, CONTEMP	ASSEMBLY	1
6	2-553	LOWER ARM ASM, CONTEMP	ASSEMBLY	1
7	2-552	UPPER ARM ASM, CONTEMP	ASSEMBLY	1
8	91325	WSHR, .23 ID X .625 OD X .093 THK, FLT, NEOPRENE	PART	1
9	1-006	C/S VALVE CARTRIDGE - HOT	PART	1
10	1-134	CARTR 3/8 HOT 1/4 TR	PART	1
11	11834	ADAPTER	PART	2
12	92477	SCRW, M4 X 16 SKT FLT HD SS	PART	2
13	12515	HANDLE HUB	PART	2
14	12514	LEVER HANDLE	PART	2
15	92192	SCRW, 10-32 X 5/8 SKT HD CUP PT SS	PART	2



TESTING	-	-	-
ASSEMBLY	-	-	-
PLATING	-	-	-
POLISHING	-	NEXT ASSY	USED ON
MACHINING	-	APPLICATION	
TOOLING	FIXTURE #	REMOVE ALL BURRS AND SHARP EDGES	

UNITS ARE: INCHES [MM]
 TOLERANCES ARE:
 FRACTIONS DECIMALS ANGLES
 ±1/16" .X ±.1 [2.5] ±1°
 .XX ±.06 [1.5]
 (X.XXX) DENOTES CRITICAL DIMS.
 ALL THREADS ARE CRITICAL
 DRAWN J. AMOZOC 09/27/16
 CHECKED V. VU 09/27/16
 APPROVED V. VU 09/27/16

BRASSTECH 2001 CARNEGIE AVE.
 INCORPORATED SANTA ANA, CA 92705
 (949) 417-5207

POT FILLER - WALL MOUNT

DWG NO. 2940-5503 REV A

SCALE .300 REF. - SHEET 1 OF 3

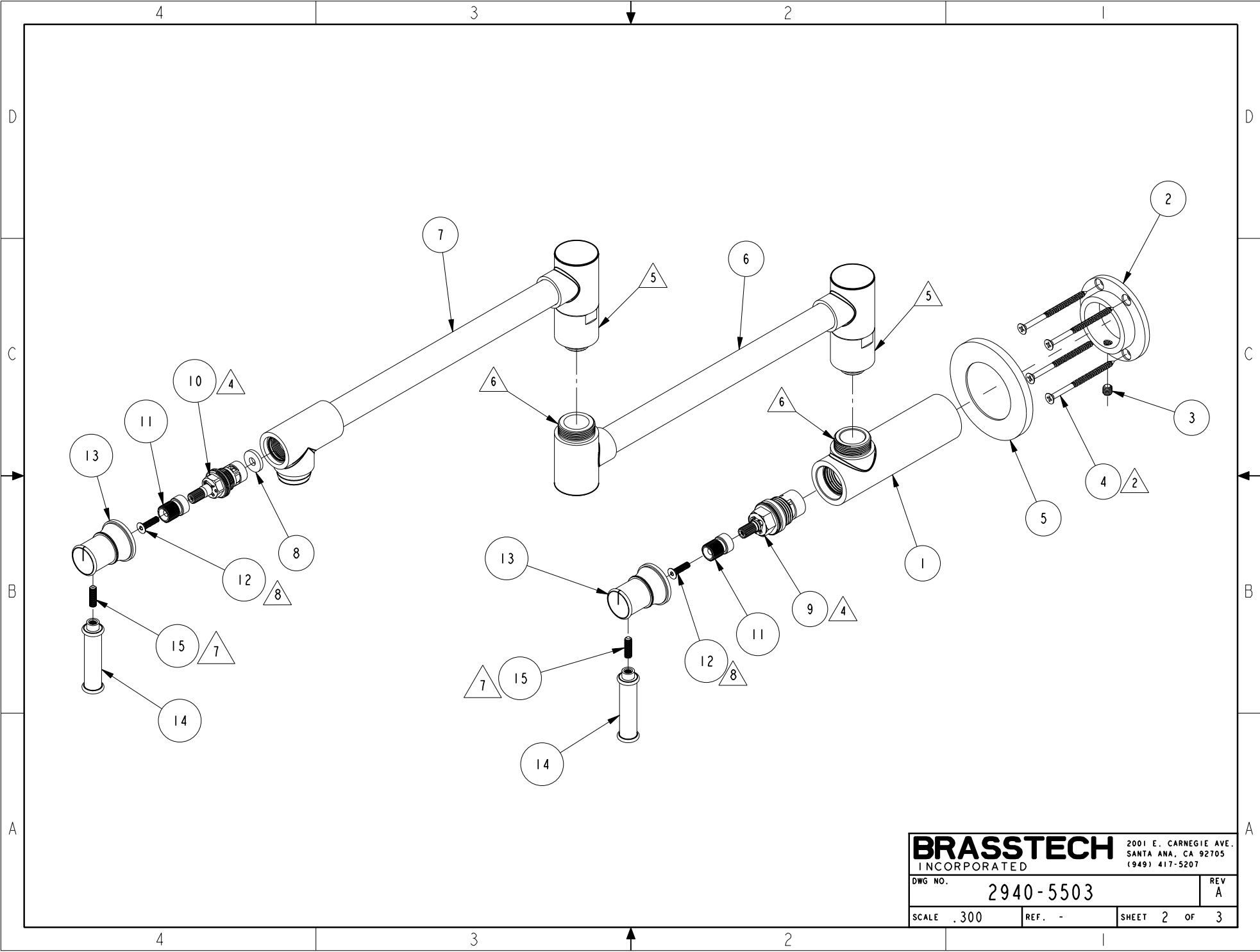
ZONE	REV	DESCRIPTION	DATE	APPROVED
A	-	EN-3293	3/31/17	J. A.
-	-	EN-2980	09/27/16	V. V.

COPYRIGHT 2005 BRASSTECH, INC.
 THESE DRAWINGS AND THE DESIGNS
 DEPICTED HEREIN ARE THE PROPRIETARY
 PROPERTY OF BRASSTECH. ANY USE
 OR REPRODUCTION IS SUBJECT TO
 THE EXPRESS APPROVAL OF BRASSTECH.
 UNAUTHORIZED USE IS STRICTLY
 PROHIBITED. ALL RIGHTS RESERVED.

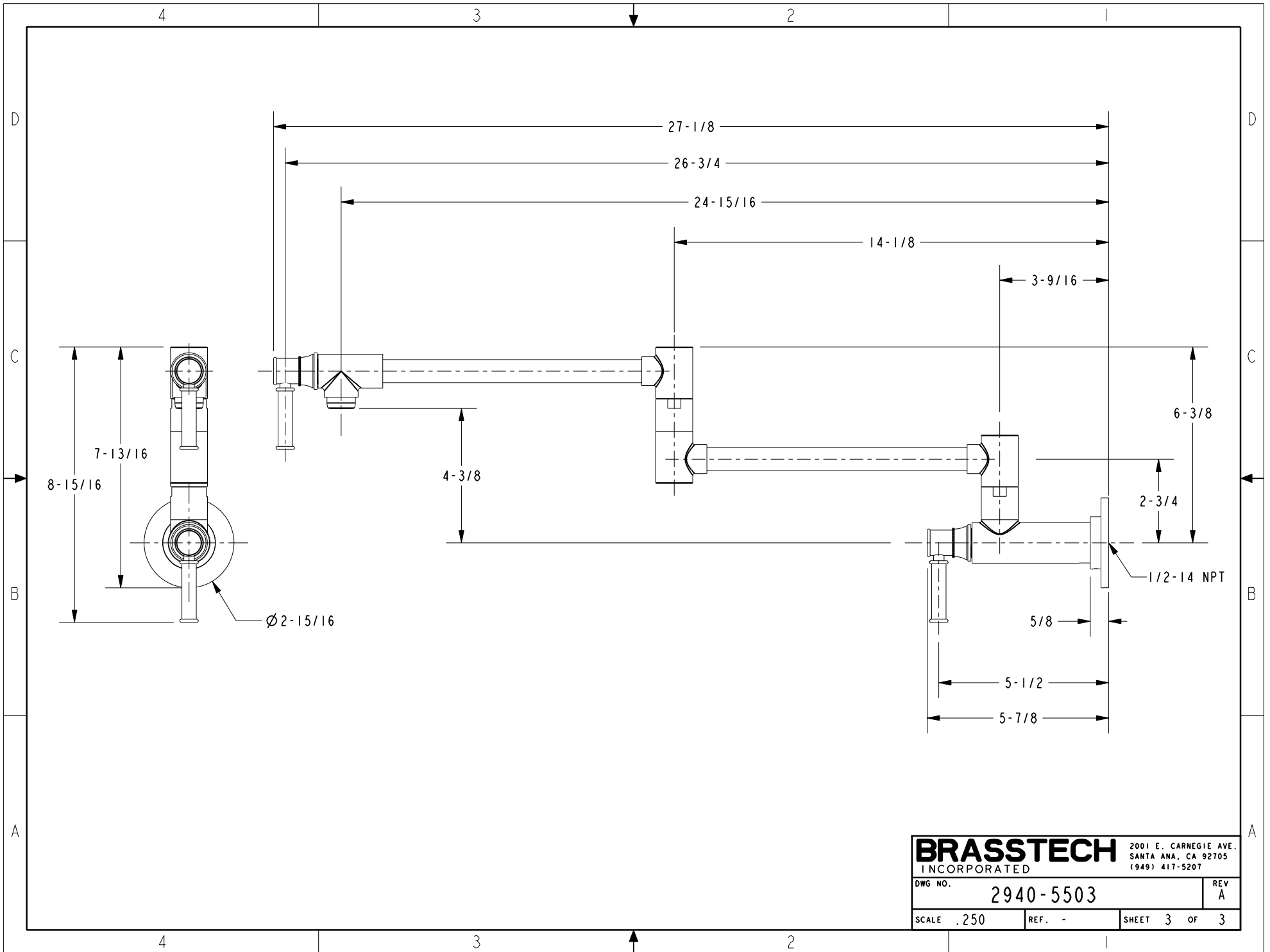
4

3

2



BRASSTECH		2001 E. CARNEGIE AVE.	
INCORPORATED		SANTA ANA, CA 92705	
DWG NO.		REV	
2940-5503		A	
SCALE .300	REF. -	SHEET 2 OF 3	



BRASSTECH		2001 E. CARNEGIE AVE.
INCORPORATED		SANTA ANA, CA 92705
		(949) 417-5207
DWG NO.	2940-5503	REV A
SCALE .250	REF. -	SHEET 3 OF 3