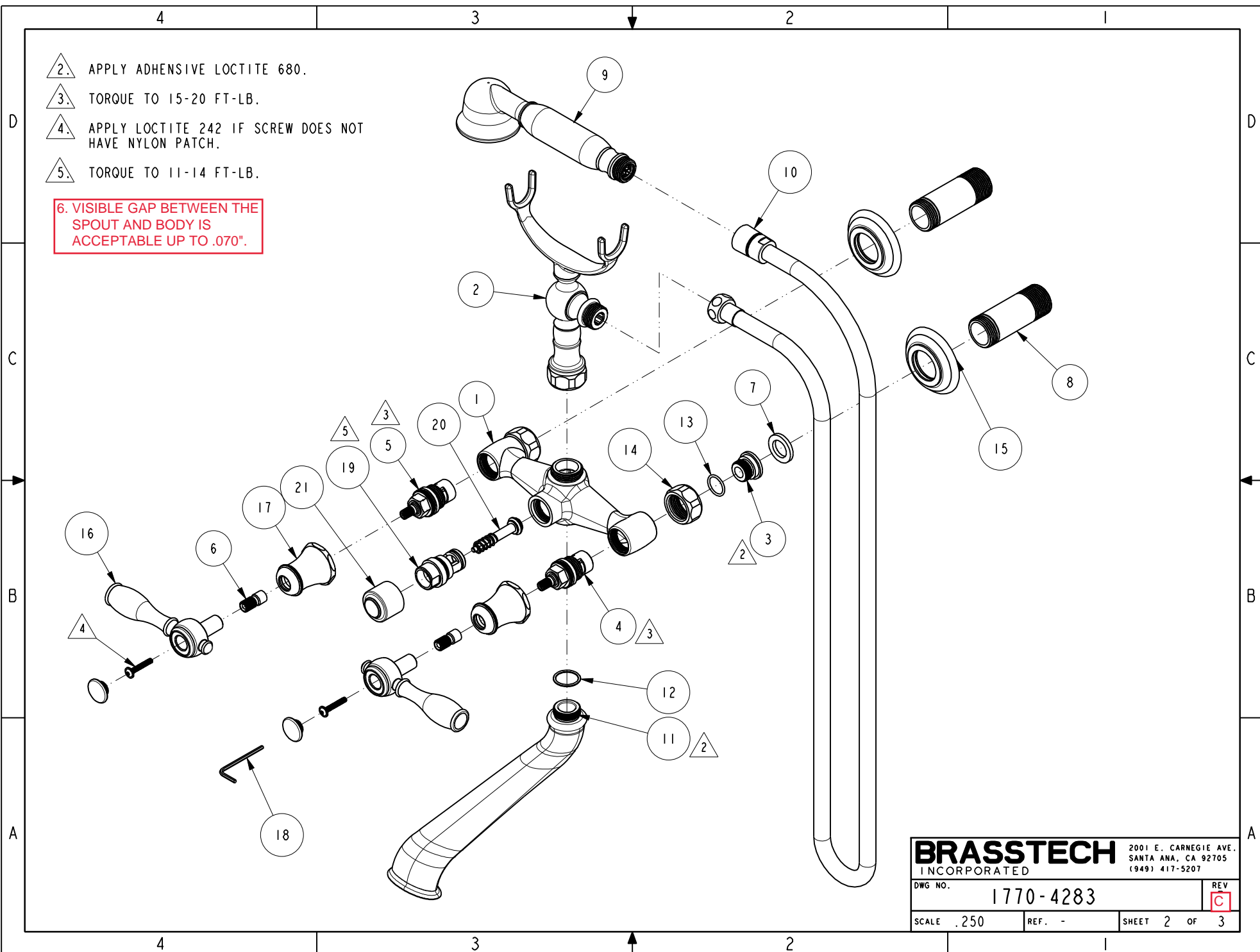
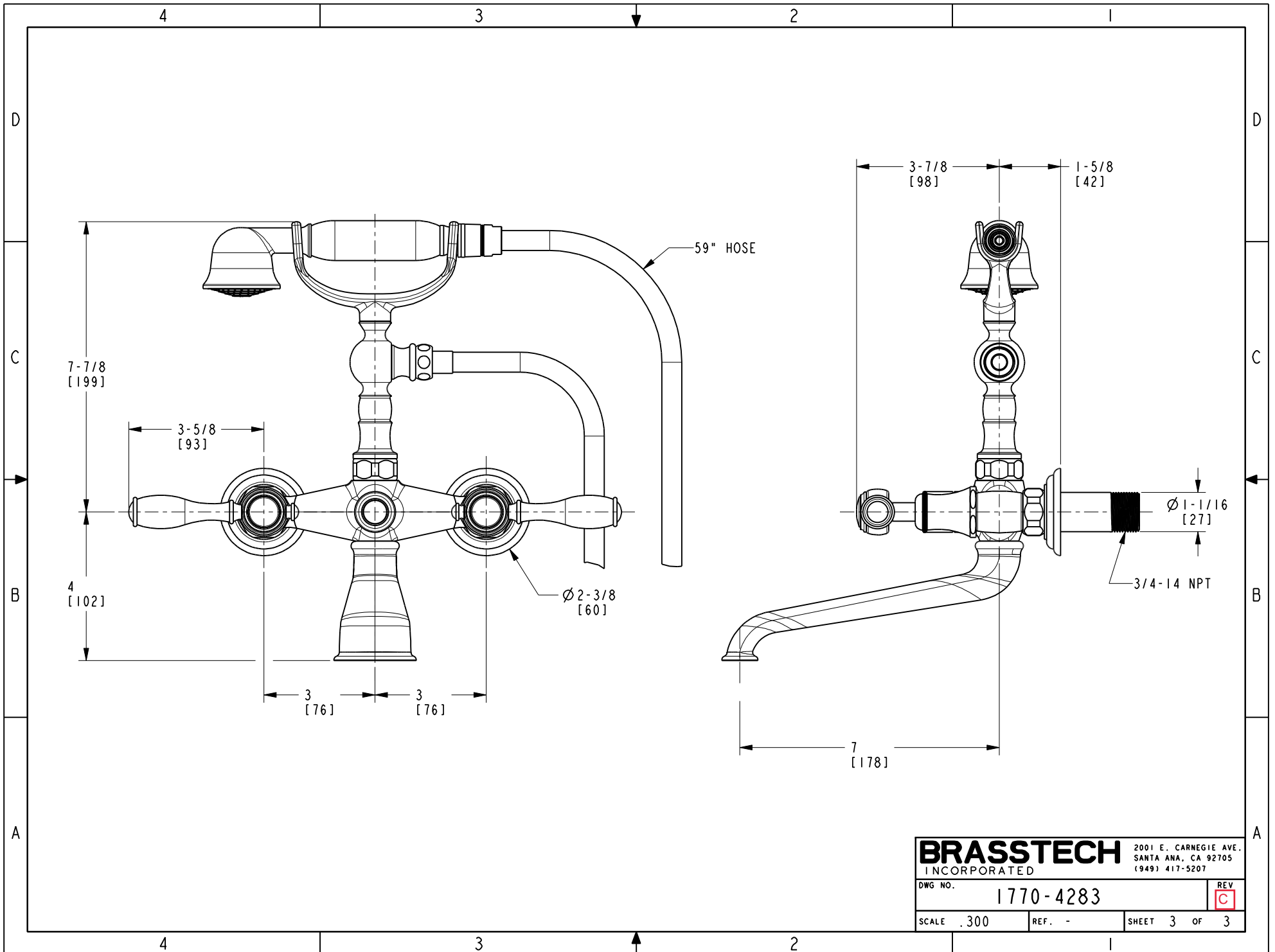


- △2. APPLY ADHESIVE LOCTITE 680.
- △3. TORQUE TO 15-20 FT-LB.
- △4. APPLY LOCTITE 242 IF SCREW DOES NOT HAVE NYLON PATCH.
- △5. TORQUE TO 11-14 FT-LB.

6. VISIBLE GAP BETWEEN THE SPOUT AND BODY IS ACCEPTABLE UP TO .070".



BRASSTECH		2001 E. CARNEGIE AVE. SANTA ANA, CA 92705 (949) 417-5207	
DWG NO.	1770-4283	REV	C
SCALE	.250	REF.	-
		SHEET	2 OF 3



BRASSTECH		2001 E. CARNEGIE AVE. SANTA ANA, CA 92705 (949) 417-5207	
DWG NO.	1770-4283		REV C
SCALE .300	REF. -	SHEET 3	OF 3