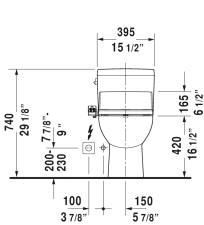
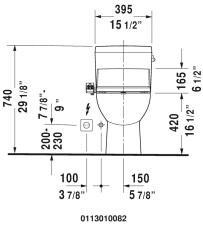
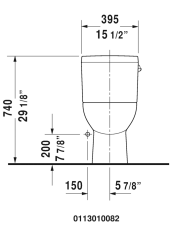
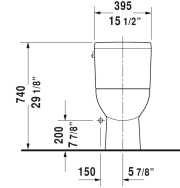
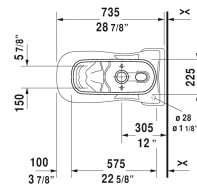
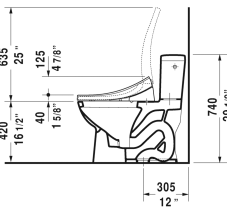
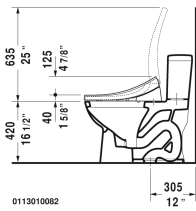
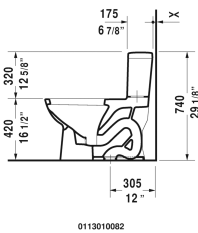
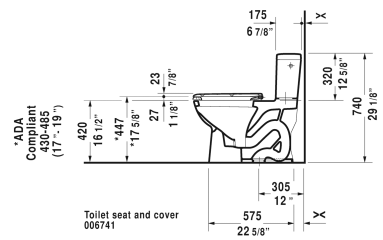
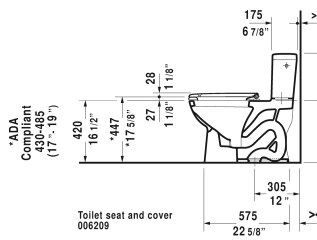
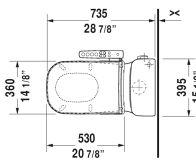
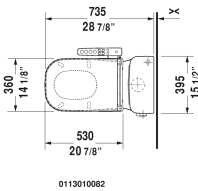
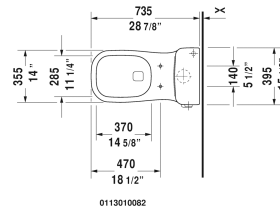
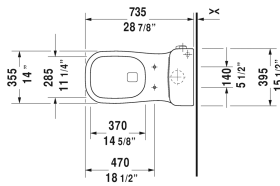
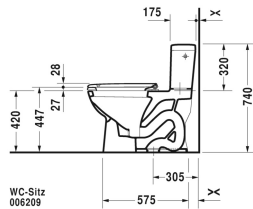


# D-Code One-Piece toilet & # 011301..01 / 011301..82

< 15 1/2" Inch >



One-Piece toilet	Dimension	Weight	Order number
syphonic, 12" rough-in, vertical outlet, cUPC® listed*, 1.28 gpf			
<b>Colors</b>			
00 White 20 HygieneGlaze (an antibacterial ceramic glaze that provides almost indefinite effectiveness)			
<b>Variant</b>			
• with single flush mechanism with side lever left	15 1/2" x 28 7/8" Inch	87 lb	011301..01
• with single flush mechanism with side lever right	15 1/2" x 28 7/8" Inch	87 lb	011301..82
<b>Infobox</b>			
* Complies with following standards: ASME A12.19.2/CSA B45.1			

**D-Code One-Piece toilet**  # 011301..01 / 011301..82

|< 15 1/2" Inch >|

Mounting set for One-Piece and Two-Piece toilets, outlet 3/8" - male thread, wall connection 1/2" - female thread, 1/2", North American version	15" Inch	1.1 lb	001431
<b>Suitable products</b>			
Toilet seat and cover elongated, hinges stainless steel, without slow close,			006741
Toilet seat and cover elongated, hinges stainless steel, removable, with slow close,			006209

*All drawings contain the necessary measurements which are subject to standard tolerances. They are stated in inch & mm and are non-binding. Exact measurements, in particular for customized installation scenarios, can only be taken from the finished ceramic piece.*