

EMERGENCY TEMPERING VALVES

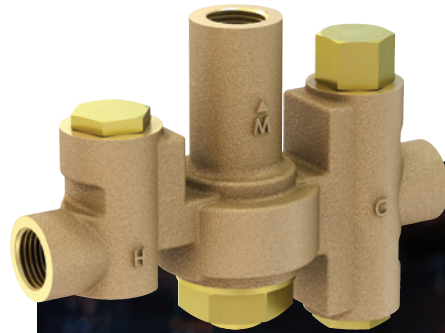
MODEL NO. ET71

FUNCTION:

ET71 is intended for use with emergency eye washes, face washes, eye/face wash combinations, and drench

STANDARDS:

- » ASSE 1071
- » CSA B125.3
- » cUPC
- » Lead-free
- » Patent No. - 9,898,017B2 - 9,879,658



MODEL NO. ET71



MODEL NO. S0320-HFC

PRODUCT FEATURES AND BENEFITS:

- » Lead-free DZR Brass with corrosion-resistant internal components.
- » IAPMO Lab Certified to ASSE 1071 with minimum flow rates as low as 0.5 GPM.
- » The ET71 is capable of exceeding the temperature control accuracy requirements of ASSE 1071 at zero draw, i.e. user demand. The system must include a continuously operating recirculation pump capable of meeting the minimum flow rate of 0.5 to 3 GPM (based on the model) with a properly adjusted balancing valve. See the ET71 submittal sheet for more information.
- » Integral strainers are accessible for cleaning.
- » Reliable integral cartridge style checks.
- » 4 models ensure the appropriate size/flow for your application; eye washes, face washes, drench showers and combination units.
- » Patented, instantaneous cold water bypass ensures that hot water supply failure cannot prevent the cold water from reaching the safety device.
- » Connections: 1/2" to 1-1/2" NPT
- » Hex key setpoint adjustment and lock nut resists unauthorized setpoint changes.
- » Optional Outlet Temperature Gauge and Connection "T."
- » Unlike check stops that are standard with competitive products, optional Acorn locking ball valves meet ANSI Z358.1 and ASSE 1071 requirements that state "if shut-off valves are installed in the supply line for maintenance purposes, provisions shall be made to prevent unauthorized shut-off." Acorn's optional locking ball valves eliminate the need for a lockable cabinet to prevent unauthorized shut-off.
- » Ideal for use with: Acorn Safety Eye Washes, Eye/Face Washes, Drench Showers, and Combination Units to provide tepid water per ANSI z358.1.

ATTRIBUTE	VALUE
Flow Rate	up to 150 GPM @ 45 psid
Temperature Adjustment Range	60 to 95°F
Minimum Hot Water Temperature Required	5°F above setpoint
Maximum Hot Water Temperature	180°F
Maximum Supply Pressure	125 psi
IAPMO certified Minimum Flow Rate, per ASSE 1071	ET71-1: 1GPM ET71-2: 1GPM ET71-3: 3GPM ET71-4: 3GPM