

# 300 PSI CWP Iron Body Gate Valves

Fire Protection Valve • Outside Screw and Yoke • **Resilient Wedge** • Epoxy Coated Interior/Exterior • Pre-Grooved Stem for Supervisory Switch • Drilled, Tapped and Plugged at Boss Location A\*\*

**300 PSI/20.6 Bar Non-Shock Cold Working Pressure**

UL/ULC LISTED† • FM APPROVED • CERTIFIED LEAD-FREE\*  
BY TRUESDAIL LABORATORIES TO NSF/ANSI 61 & 372

## MATERIAL LIST

PART	SPECIFICATION
1. Valve Body	Ductile Iron ASTM A536
2. Resilient Wedge	Ductile Iron ASTM A536/EPDM ASTM D2000
3. Wedge Nut	ASTM B584 UNS C83600
4. Dowel Pin	ASTM A276 SS304
5. Stem Back Seat O-Ring	EPDM ASTM D2000
6. Bonnet Gasket	EPDM ASTM D2000
7. Bonnet	Ductile Iron ASTM A536
8. Stem Packing	EPDM ASTM D2000
9. Threaded Rod	ASTM A276 SS304
10. Gland Bushing	ASTM B584 UNS C83600
11. Gland	Ductile Iron ASTM A536
12. Gland Nut	ASTM B148 C95200 Aluminum Bronze
13. Yoke	Ductile Iron ASTM A536
14. Yoke Bushing	ASTM B150 C61400
15. Flat Point Set Screw	ASTM F912M
16. Yoke Bushing Retainer	Cast Iron ASTM A126 Class B
17. Handwheel	Ductile Iron ASTM A536
18. Handwheel Nut	Carbon Steel Corrosion Resistant
19. Stem	Stainless Steel 304
20. Bonnet Screw	Corrosion-resistant Steel
21. NPT Pipe Plug	Steel ASME B16.14
22. UL/FM Label (not shown)	Aluminum
23. Yoke Screw	Steel Plated ASTM A307
24. Drive Screw Label (not shown)	Stainless Steel 304

Coating — Electrostatically applied fusion-bonded epoxy 8-20 mil. inside and outside meets or exceeds AWWA C550.

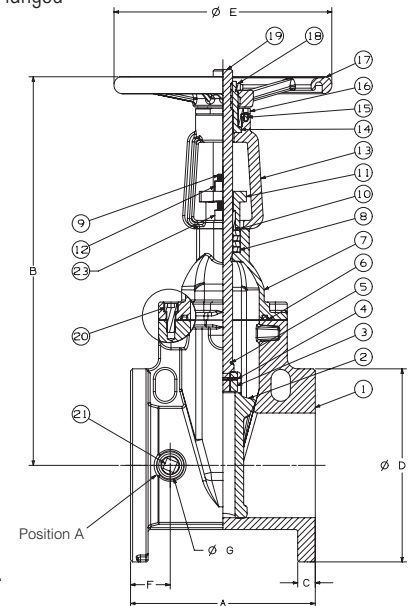
\*\*Drilled, tapped and plugged at Position A with ½" valve sizes 2½"-4", ¾" on 6"-8", 1" on 10"-16".

† Compliance with the Standard for Gate Valves for Fire Protection Service, UL 262, and the Canadian Requirements, ULC/ORD-C262.

NOTE: Flanged valve is consistent with ANSI B16.1 Class 125.



**F-607-RWS**  
Flanged



**F-607-RWS**  
Flg x Flg

## DIMENSIONS—WEIGHTS—QUANTITIES

Size	Dimensions														Bolt Circle	Flange Holes	Flange Turns to Open	Weight	
	A	B Open		B Closed		C		D		E		F		G				Lbs.	Kg.
In. mm.	In. mm.	In. mm.	In. mm.	In. mm.	In. mm.	In. mm.	In. mm.	In. mm.	In. mm.	In. mm.	In. mm.	In. mm.	In. mm.	In. mm.	In. mm.	In. mm.			
2½	65 7.5	190 17.2	437 14.5	368 15.4	391 15.4	0.69 17.5	7.0 178	7.9 200	1.48 38	1.4 36	5.50 140	4 6.30	39	18					
3	80 8.0	203 18.6	472 15.4	391 15.4	0.75 19.0	7.5 191	7.9 200	1.73 44	1.4 36	6.00 152	4 10.00	44	20						
4	100 9.0	229 21.4	544 17.3	439 17.3	0.94 24.0	9.0 229	10.2 260	2.13 54	1.4 36	7.50 191	8 10.00	72	33						
6	150 10.5	267 28.4	721 22.4	569 22.4	1.00 25.4	11.0 279	12.4 315	2.26 57	1.5 39	9.50 241	8 15.00	117	53						
8	200 11.5	292 36.1	917 28.0	711 28.0	1.13 28.7	13.5 343	14.8 375	2.46 63	1.5 39	11.75 298	8 16.70	198	90						
10	250 13.0	330 44.5	1130 34.4	874 34.4	1.19 30.2	16.0 406	16.4 416	3.15 80	1.8 46	14.25 362	12 20.80	374	170						
12	300 14.0	356 51.7	1313 39.7	1008 39.7	1.25 31.8	19.0 483	17.5 445	2.91 74	1.8 46	17.00 432	12 25.00	493	224						
14*	350 15.0	381 62.8	1595 50.0	1270 50.0	1.38 35.0	21.0 533	19.7 500	2.95 75	3.2 81	18.75 476	12 43.80	620	284						
16*	400 16.0	406 66.5	1689 50.7	1288 50.7	1.44 37.0	23.5 597	19.7 500	3.03 77	3.2 81	21.25 540	16 50.00	816	370						

\*14 and 16" valves 250 PSI CWP

**⚠ WARNING:** This product can expose you to chemicals including lead, which is known to the State of California to cause cancer and birth defects or other reproductive harm. For more information go to [www.P65Warnings.ca.gov](http://www.P65Warnings.ca.gov).

**FREEZING WEATHER PRECAUTION:** Subsequent to testing a piping system, gate valve should be in an open position to allow complete drainage.

\*Weighted average lead content ≤ 0.25%

Visit our website for the most current information.