

N	<div style="display: flex; justify-content: space-between; align-items: center;"> <div style="text-align: left;"> SMITH® JAY R. SMITH MFG. CO.® <small>DIVISION OF SMITH INDUSTRIES, INC. POST OFFICE BOX 3237 MONTGOMERY, ALABAMA 36109-0237 (USA) TEL: 334-277-8520 FAX: 334-272-7396 www.jrsmith.com</small> </div> <div style="text-align: center;"> <small>MEMBER OF:</small> </div> <div style="text-align: center;"> <small>MEMBER OF:</small> </div> </div>				LOCATION			
	<h2 style="margin: 0;">FLOOR CLEANOUTS WITH "TWIS-TO-FLOOR®" ADJUSTABLE TOPS FOR UNFINISHED AREAS</h2>							
DRAWING NUMBER S4237	SIZE A	SCALE: NONE	DATE: 2-16-70	APPROVED BY: JM	CHECKED BY: BH	DRAWN BY: RK	WE CAN ASSUME NO RESPONSIBILITY FOR USE OF SUPERSEDED OR VOID DATA	
<h3 style="margin: 0;">ROUND CAST IRON TOP - TRACTOR COVER</h3> <p style="margin: 5px 0;">FUNCTION: Used in unfinished areas where a loose set, non-tilt tractor cover is desired. Will withstand heavy load traffic.</p> <div style="display: flex; justify-content: space-around; align-items: flex-start;"> <div style="text-align: left;"> <p>"C.O." cast in Cover</p> <p>Flashing Clamp (when specified)</p> <p>Flashing Flange (when specified)</p> </div> <div style="text-align: center;"> <p style="margin-top: 10px;">TWIS-TO-FLOOR® ADJUSTMENT</p> <p style="margin-top: 5px;">SPEEDI-SET OUTLET ▲</p> <p style="margin-top: 5px;">"A" (Pipe Size) = 02(50), 03(75) or 04(100)</p> </div> <div style="text-align: right;"> <p>Adj. Top and Frame</p> <p>Min. 4 3/4"(120) Max. 5 15/16"(149)</p> <p>* 2 3/4"(70)</p> <p>4"(100)</p> <p>2 3/16"(56)</p> <p>9"(230) DIA.</p> <p>* This Dimension to Internal Stop of Speedi-set Gasket.</p> </div> </div>								
<div style="display: flex; justify-content: space-between;"> <div style="width: 45%;"> <p><input type="checkbox"/> Fig. 4237L.....Gasket Seal - ABS Plug</p> <p><input type="checkbox"/> Fig. 4238L.....Gasket Seal - Bronze Plug</p> <p><input type="checkbox"/> Fig. 4239L.....Taper Thread - Bronze Plug</p> <p><input type="checkbox"/> Fig. 4236L.....Taper Thread - ABS Plug</p> </div> <div style="width: 50%;"> <p>(Twis-to-Floor® design shown with gasketed plug.)</p> <p>NOTE: Dimensions shown in parentheses are in millimeters.</p> <p>▲ Available in Extra Heavy, Service Weight or NO-HUB.</p> </div> </div>								
<div style="display: flex; justify-content: space-between;"> <div style="width: 30%;"> <p>REGULARLY FURNISHED:</p> <p>Duco Cast Iron Cleanout with Round Adjustable Scoriated Cast Iron Top with Non-Tilt Tractor Cover. Closure Plug Type as Indicated by Figure Number Selected.</p> </div> <div style="width: 35%;"> <p>VARIATIONS:</p> <p><input type="checkbox"/> Center Securing Screw -CSS</p> <p><input type="checkbox"/> Vandal Proof Center Securing Screw -U</p> <p><input type="checkbox"/> Flashing Flange -F</p> <p><input type="checkbox"/> Flange with Flashing Clamp -F-C</p> </div> <div style="width: 30%;"> <p>OPTIONAL MATERIALS:</p> <p><input type="checkbox"/> Galvanized Cast Iron -G</p> <p><input type="checkbox"/> Ductile Iron Cover -M</p> <p><input type="checkbox"/> Nickel Bronze Top -NB</p> <p><input type="checkbox"/> Polished Bronze Top -PB</p> </div> </div>								
FIGURE NUMBER 4237 SERIES	N M L 07/29/02 04/12/01 10/31/00	Corrected Clamp & Flange view Added dimension and note New design	JJ JJ JJ	CL CL BS	WEIGHT POUNDS	VOLUME CUBIC FEET	FIGURE NUMBER 4237 SERIES	
REV.	DATE	DESCRIPTION	BY	CKD. BY				



SMITH® JAY R. SMITH MFG. CO.®
DIVISION OF SMITH INDUSTRIES, INC.
POST OFFICE BOX 3237
MONTGOMERY, ALABAMA 36109-0237 (USA)
TEL: 334-277-8520 FAX: 334-272-7396 www.jrsmith.com



MEMBER OF:

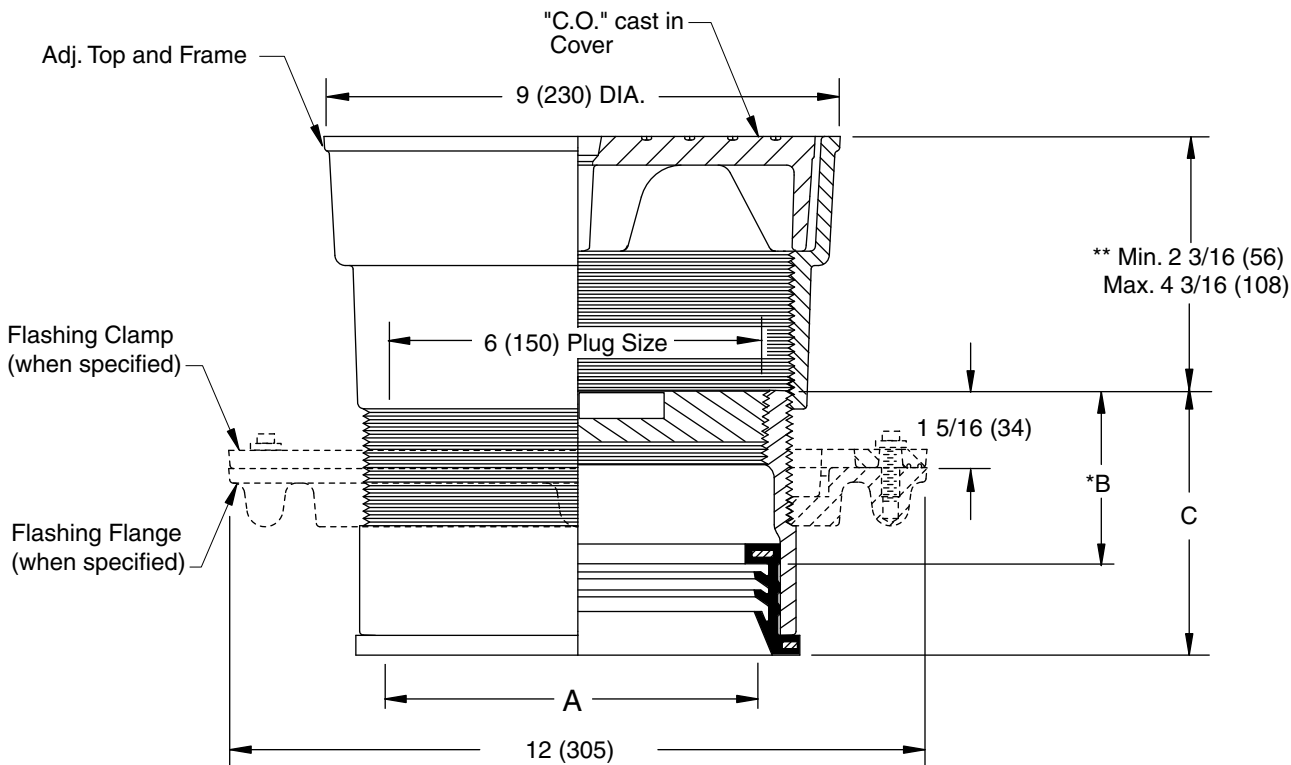


LOCATION

FLOOR CLEANOUTS WITH "TWIS-TO-FLOOR®" ADJUSTABLE TOPS FOR UNFINISHED AREAS

ROUND CAST IRON TOP - TRACTOR COVER

FUNCTION: Use in unfinished areas where a loose set, non-tilt tractor cover is desired. Will withstand heavy load traffic.



SPEEDI-SET OUTLET ▲

"A" (Pipe Size) = 06(150) & 08(200)

A SIZE	B	C
06(150)	*3(76)	4 9/16(117)
08(200)	*3 1/4(83)	4 13/16(121)

▲ Available in "L" Service Weight, "LXH" Extra Heavy or "LPVC" PVC or ABS. "LPVC" applicable to 06(150) Pipe Size only.

* This Dimension to Internal Stop of Speedi-Set Gasket.

** When Flange-F is specified Min. 2 3/16 (56) becomes 2 11/16 (68)

"TWIS-TO-FLOOR®" ADJUSTMENT

SPEEDI-SET OUTLET ▲

☐ Fig. 4239L.....Taper Thread - Bronze Plug

REGULARLY FURNISHED:

Ducto Cast Iron Cleanout with Taper Thread Bronze Plug and Round Adjustable Scoriated Cast Iron Top with Non-Tilt Tractor Cover.

VARIATIONS:

- ☐ Flashing Flange -F
- ☐ Flange with Flashing Clamp -F-C
- ☐ Vandal Proof Top -U
- ☐ Center Securing Screw -CSS

OPTIONAL MATERIALS:

- ☐ Galvanized Cast Iron -G
- ☐ Polished Bronze Top -PB
- ☐ Nickel Bronze Top -NB
- ☐ Ductile Iron Cover -M

NOTE: Dimensions shown in parentheses are in millimeters.

DRAWING NUMBER
S4237BS

SIZE
A

SCALE:
NONE

DATE:
5-5-06

APPROVED BY:
CEL

CHECKED BY:
CL

DRAWN BY:
RN

FIGURE
NUMBER
4239

WE CAN ASSUME NO RESPONSIBILITY FOR USE OF SUPERSEDED OR VOID DATA

REV.	DATE	DESCRIPTION	BY	CKD. BY

WEIGHT
POUNDS

VOLUME
CUBIC FEET

FIGURE NUMBER

4239