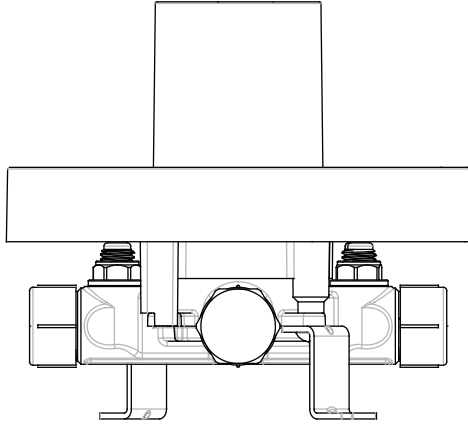


ACCUFIT® PRESSURE BALANCED TUB AND SHOWER ROUGH-IN VALVE

Product Code: SH4001



Product Features

- Cast brass valve body
- 1/2" MIP or SWT with integral stops
- Ceramic disc cartridges
- Back-to-back capability
- Adjustable temperature limit stop
- Quick remove plaster guard
- Easy mounting brackets
- Requires valve trim (sold separately)

Optional Accessories:

- ACF4001EXT - Extension kit
- ACF4001AIR - Air test cap
- ACF4001UCRT -Replacement cartridge
- ACF4001STOP -Replacement stop
- ACF4001GRD2 -Replacement plaster guard

Codes and Certifications



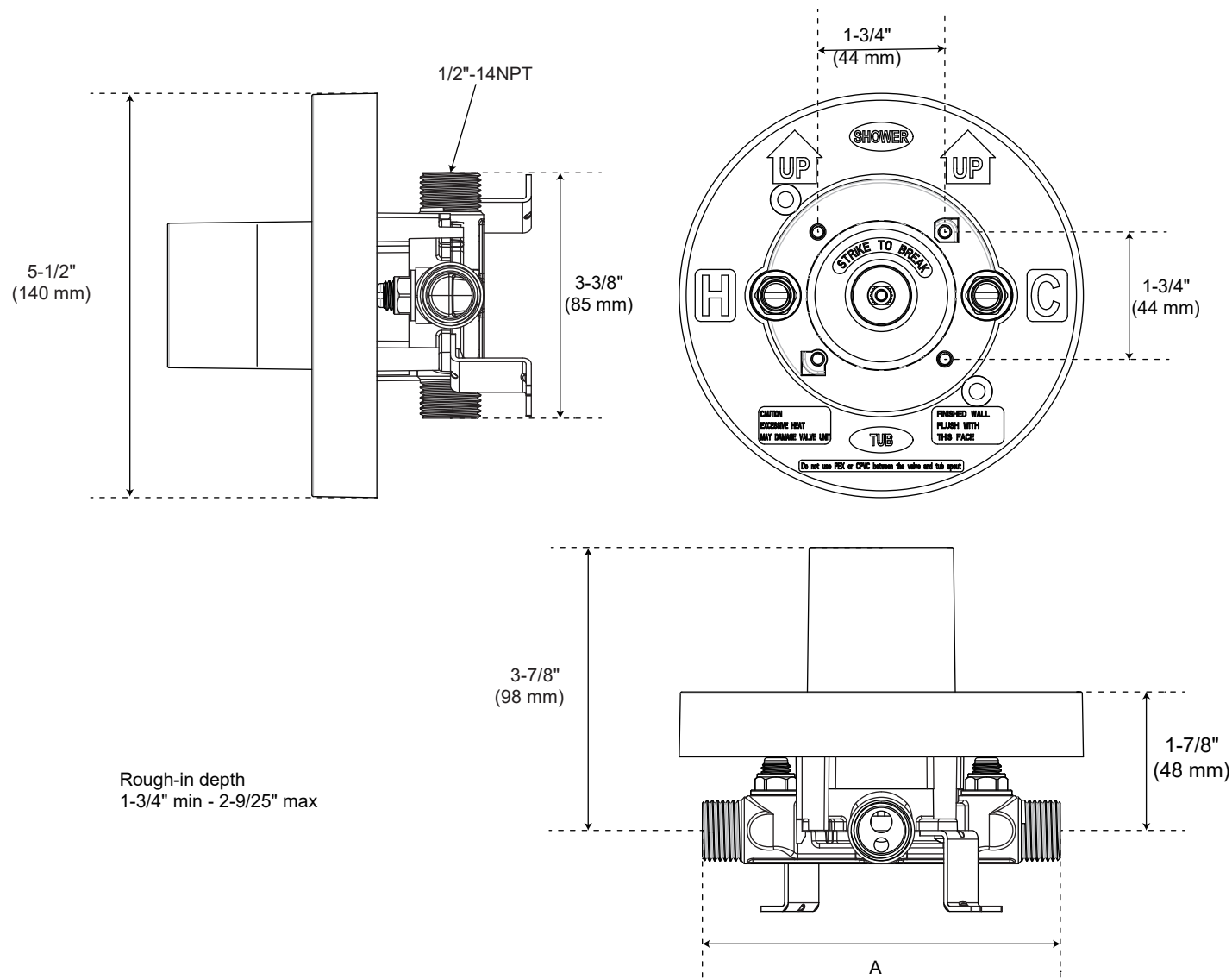
- cUPC/IAPMO listed
- Meets ASME A112.18.1 /CSA B125.1
- Meets or exceeds ASSE 1016-P standards (anti-scald)

Part Code	Pressure Differential - psi			
	20 psi	40 psi	60 psi	80 psi
SH4001	2.69 gpm (10.2 L/min)	3.91 gpm (14.8 L/min)	4.73 gpm (17.9 L/min)	5.22 gpm (19.8 L/min)

Revised: 01/09/26

ACCUFIT® PRESSURE BALANCED TUB AND SHOWER ROUGH-IN VALVE

Product Code: SH4001



All dimensions and specifications are nominal and may vary. Use actual products for accuracy

Revised: 01/09/26